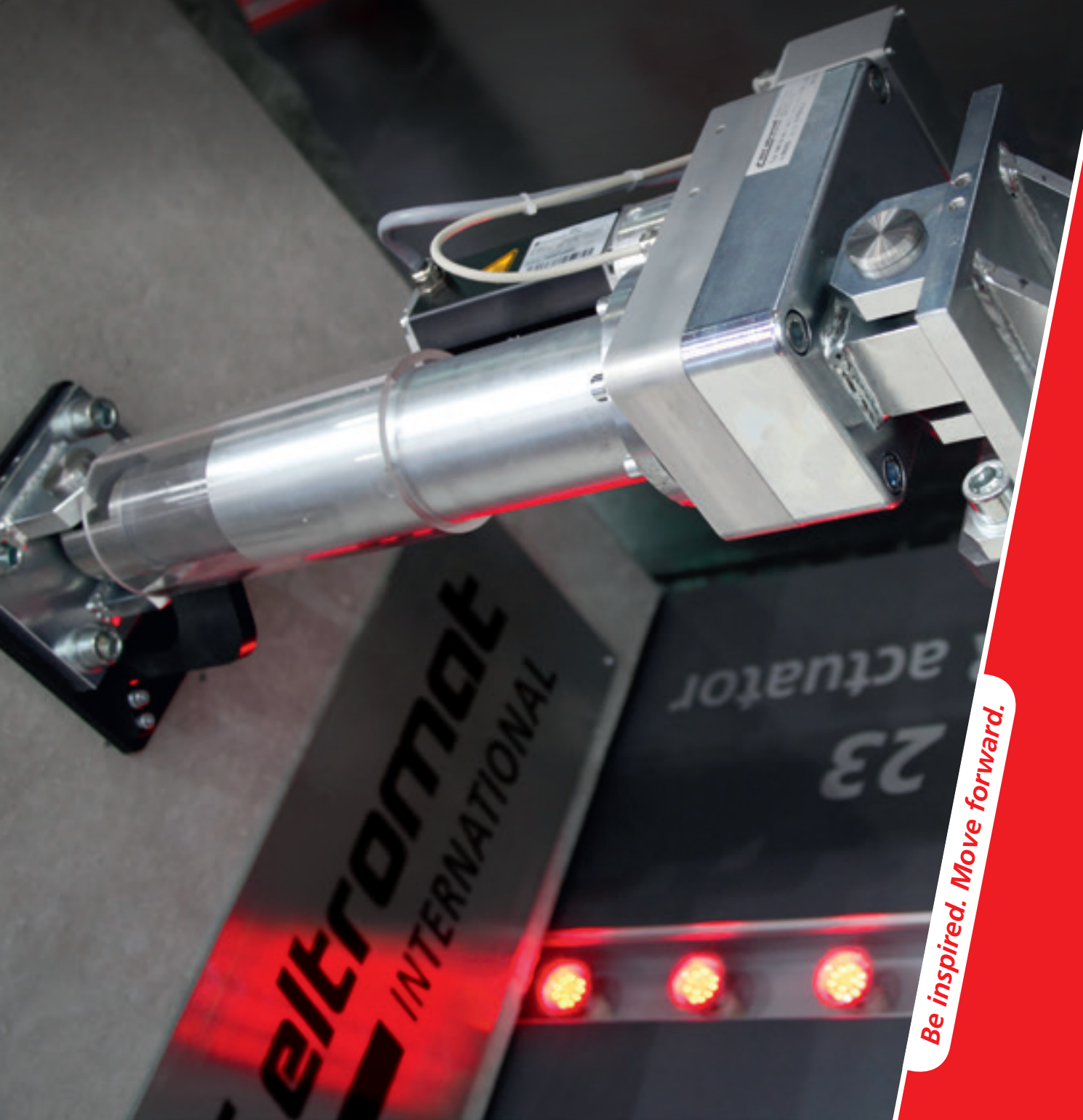


// Overview Actuators



Be inspired. Move forward.

HIGH-PERFORMANCE POSITION CONTROL FOR ANY APPLICATION

Motor-driven actuators

Motor-driven actuating drives are used wherever a very fast response to web position changes is needed. The actuator can be connected directly to the controller.

Ready-to-install designs mean quick, cost-effective assembly which is particularly beneficial for retrofitting existing systems.

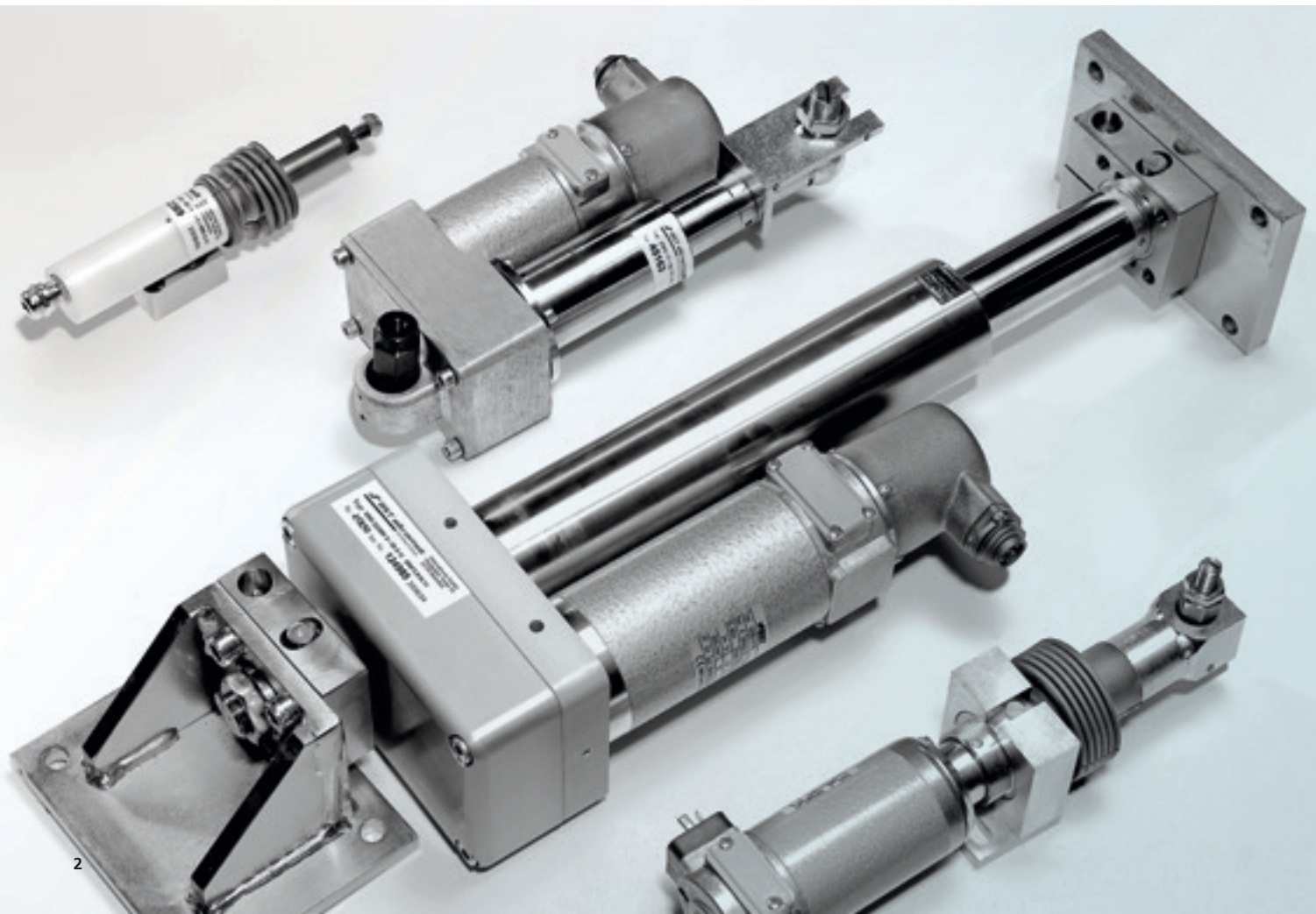
Features of BST eltromat's actuators:

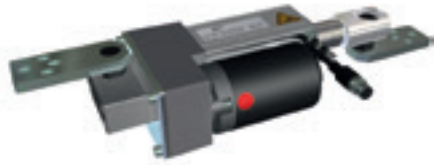
- Wear-resistant DC motors
- Ball screw spindle drives for a long service life and minimum backlash
- Designed for curved and linear correcting movements
- Various combinations of actuation path, force and speed possible
- Available with or without position feedback (precise capturing of current actuating drive position) and electronic end position switch-off
- Maintenance-free

Performance data

BST eltromat actuators can be used in combination with our guiding devices for a variety of web guiding tasks. We offer electric drives with actuating forces of up to 9,000 N and strokes of up to 300 mm with or without position feedback.

The actuating forces of our hydraulic power units reach up to 20,000 N with various strokes.

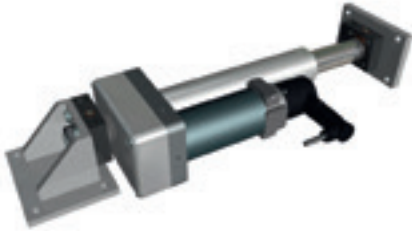




Actuator EMS 18
Up to 200 mm stroke with max. 840 N



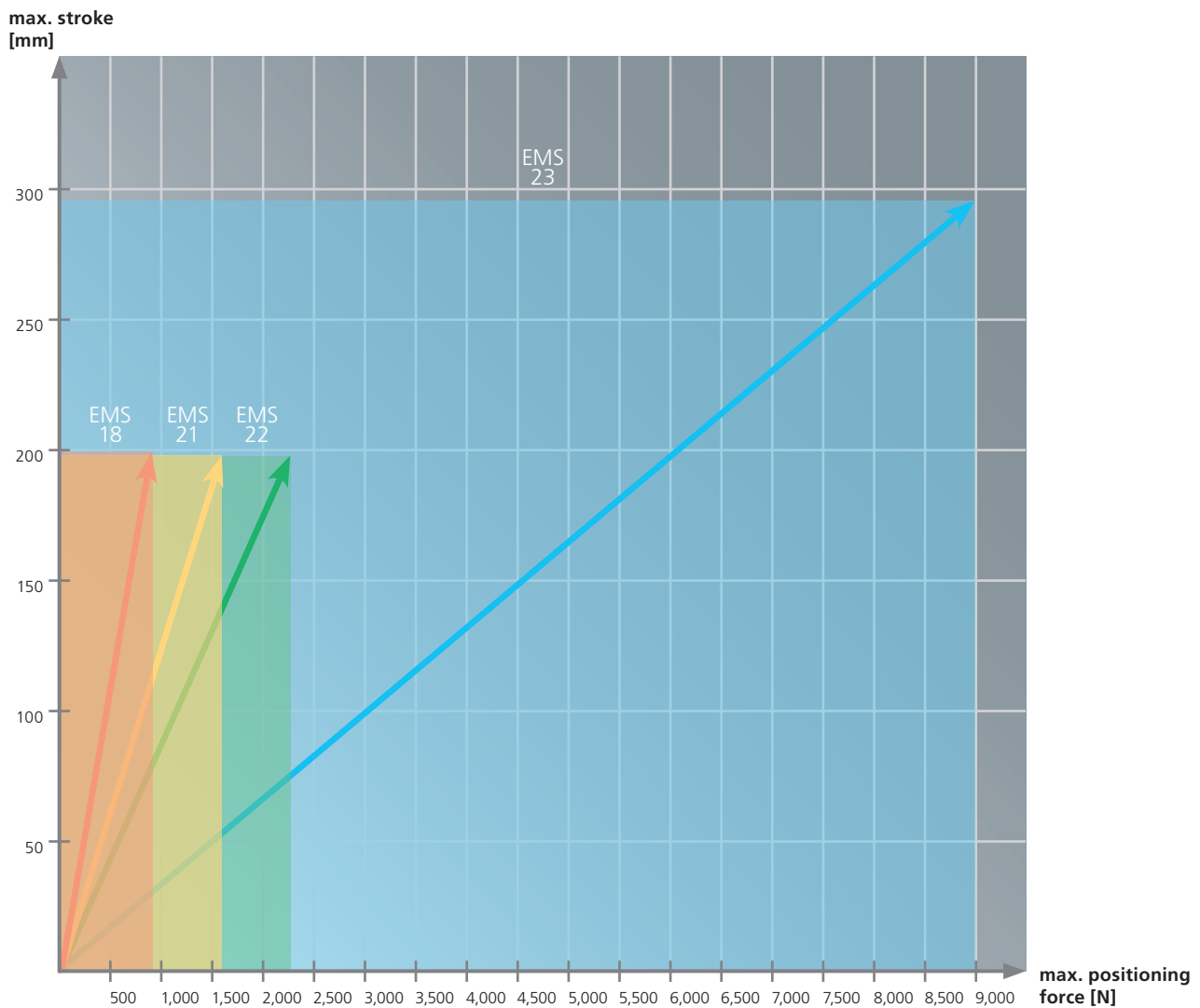
Actuator EMS 21
Up to 195 mm stroke with max. 1,680 N



Actuator EMS 22
Up to 195 mm stroke with max. 2,250 N



Actuator EMS 23
Up to 300 mm stroke with max. 9,000 N



INTELLIGENT SERVICE THAT MOVES YOU FORWARD.

No matter where in the world you use our technologies: We support you reliably with our comprehensive BST eltromat service.

Our specialists are located all over the world and can be on site quickly in case of emergencies. You can access an extensive global production, sales and service network – for first-class performance at any location.

For your benefit, we always adapt our systems exactly to the requirements of your production. Combine solutions from our various product areas:

- Web Guiding
- 100% Inspection
- Register Control
- Web Video Inspection
- Color Measurement
- Surface Inspection
- Color Management
- Workflow
- Process Automation
- Layer Thickness & Basis Weight Measurement

Further information and current news are available at www.bst-international.com



Your local contact

Be inspired. Move forward.

BST eltromat International

Heidsieker Heide 53 • 33739 Bielefeld • Germany

Tel.: +49 5206 999-0 • Fax: +49 5206 999-999 • info@bst-international.com

A member of the eLEXIS group of companies

© 2015 BST eltromat International • BST-eltromat_B406_0915_EN • Subject to change

 **BST eltromat**
INTERNATIONAL