

# KINETROL®

Dashpots



Rotary Dampers .

# Precision Rotary Dampers for Smooth Motion Control



S-CRD

- vibration damping
- speed control
- shock absorption
- slipping drives
- mechanical delays

## Catalogue Contents

	Pages
Dashpot Overview	2
Dashpot Sizing	3
Calculating Required Damping Rates	4
Applications	5
Sample Calculations	6
Special Applications	7
Questionnaire	7
Model KD 60° Vane Dashpot	8
Model LA 215° Vane Dashpot	9
Model LB 240° Vane Dashpot	10
Model LE 220° Vane Dashpot	11
Model LH 220° Vane Dashpot	12
Model LX 220° Vane Dashpot	12
Model S-CRD CR Dashpot	13
Model T-CRD CR Dashpot	14
Model Q-CRD CR Dashpot	15
Model N-CRD CR Dashpot	16
Model X-CRD CR Dashpot	17
Bespoke Dashpots	18

# Rotary Dashpots

**● Kinetrol rotary dashpots**

Kinetrol rotary dashpots are precision fluid damping devices which give a smooth resistance to shaft rotation which increases with angular velocity. Two types of dashpot are available to suit a wide range of applications.

**■ Vane dashpots**

Vane dashpots give a restricted travel and high damping rate suitable for applications with reciprocating motions.

**■ Continuous rotation dashpots**

Continuous rotation dashpots give less damping rate but unlimited travel.

**● Silicone Fluid (Polydimethyl Siloxane - DC200 or equivalent)**

Silicone fluid is used as the damping medium because of its stable viscous properties. Dashpots are normally vacuum filled and sealed for life.

**● Rigorous 100% inspection**

Kinetrol's rigorous quality programme, approved to ISO 9001, ensures that each unit is manufactured to high standards. Every dashpot is tested to ensure that it gives the specified rate.



Certificate No. FM22163

## Vane Dashpots

**Angle of travel:**

- 60° (model KD)
- 215° (model LA)
- 240° (model LB)

**Maximum torque:**

- 28 Nm (model KD)
- 40 Nm (model LA)
- 160 Nm (model LB)
- 545 Nm (model LE)
- 640 Nm (model LX)
- 960 Nm (model LH)

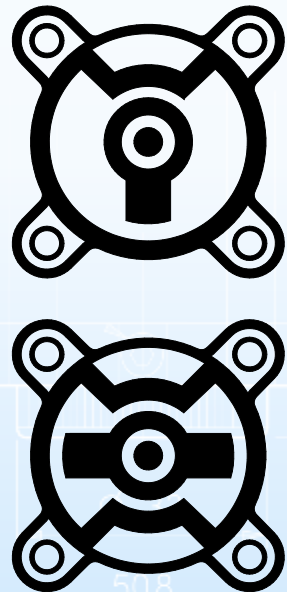
**Maximum rate:**

- 450 Nm/rad/s (model KD)
- 300 Nm/rad/s (model LA)
- 400 Nm/rad/s (model LB)
- 12000 Nm/rad/s (model LE)
- 18000 Nm/rad/s (model LX)
- 18000 Nm/rad/s (model LH)

**Adjustable versions available**



The vane dashpot is a displacement damper. As the vane on the shaft rotates between fixed vanes on the body, silicone fluid is displaced through controlled clearances from one side of the vane to the other. Damping can be in both directions or valves can be fitted to give damping in one direction only. On the KD unit, shaft sealing is by a cylindrical rubber seal which is bonded both to the shaft and to the body to give a hermetic seal. All other vane dashpots use a lip seal.



## Continuous Rotation Dashpots

**Unlimited travel**

**Maximum torque:**

- 0.4 Nm (model N-CRD)
- 1.5 Nm (model Q-CRD)
- 6 Nm (model X-CRD)
- 7 Nm (model S-CRD)
- 45 Nm (model T-CRD)

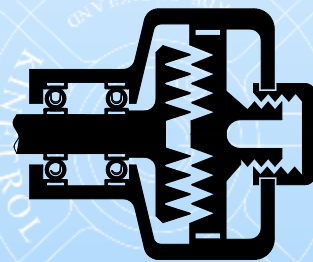
**Effective rate:**

up to 20 Nm/rad/s (T-CRD)

**Adjustable versions available**



Continuous rotation dashpots give viscous damping by shearing thin layers of silicone fluid between the concentric surfaces of a rotor and a fixed stator. Damping is normally in both directions. The shaft is sealed with a lip seal. Damping is adjusted by varying the effective thickness of the sheared layer of fluid by moving the stator relative to the rotor.



## General Notes

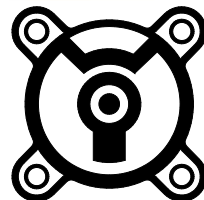
- For calculation purposes the rotation speed of the dashpot is given in RADIANS per second (1 radian = 57.3°). The significance of a radian is that if, for example, a 1 metre radius lever rotates through 1 radian, the end of the lever moves 1 metre, a distance equal to the radius.
- Damping RATE is defined here as TORQUE divided by ROTATION SPEED. Note that a dashpot with a high rate may not necessarily be working at a high torque. For example, may have a rate of 100 Nm/rad/s; however, it may be rotated at 1/10 rad/s so that the damping torque produced is 10 Nm which is not numerically equal to the rate.

## Dashpot Selection

- To select a suitable dashpot for an application, the suggested procedure is to first establish the RATE required. Most applications can be reduced to one of the cases shown opposite. The formula concerned will give the RATE.
- Having established the rate required, the type of dashpot (vane or continuous rotation) must be selected. This usually depends on the angle of travel required.
- It is recommended that initially an adjustable dashpot is used in an application. This allows the exact damping rate to be established. Subsequent units can then be supplied with fixed rates based on measurement of the adjustable unit as set on the application.

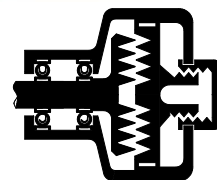
### Vane Dashpots - (High rate, restricted travel)

- Establish the rate from the formula for one of the cases opposite (or otherwise).
- Check that the maximum shaft torque does not exceed the maximum allowable. Note that max. torque = RATE x max. speed of rotation.
- For a vane dashpot the RATE does not vary much with speed and so can be used to specify the unit.



### Continuous Rotation Dashpots - (Lower rate, unlimited travel)

- Establish the rate from the formula for one of the cases opposite (or otherwise).
- Calculate the working speed  $w$  in radians/sec.
- Calculate the working torque (RATE x working speed of rotation).
- The rate of a CR dashpot is not constant. It varies with speed. This is because at the high shear rates used by this method of damping the viscosity of the fluid is not constant (Non-Newtonian). The performance of a CR dashpot is thus not specified by a single rate but is specified by a graph showing torque against speed of rotation.
- To select a CR dashpot plot the required working torque against the speed on the graph given on the data sheet. The nearest curve above the point gives the selected dashpot.



## Temperature Effects

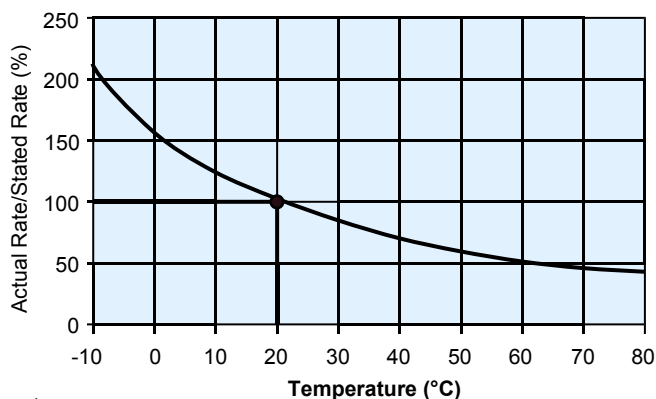
Damping rate is reduced by increases in fluid temperature (and increased by reduction in temperature). The graph opposite indicates the percentage change in damping rate with temperature, relative to the rate quoted at 20°C.

Dashpots compensated for temperature change, to keep damping rate constant, can be supplied to special order.

In addition to the effect of ambient temperature, heating of the dashpot above ambient is caused by the power absorbed by the damping action. Power dissipation limits are given for 20°C ambient. At temperatures above 20°C these power limits are derated by a factor:

$$(T_L - T_A) / (T_L - 20)$$

where  $T_L$  = Limit Temperature and  $T_A$  = Ambient Temperature.

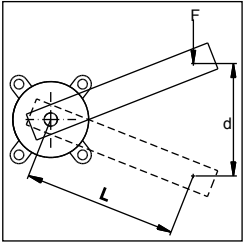


Provision is made for temperature expansion of the fluid and no topping up is required during the life of the dashpot.

## Metric Units

### Given quantity and unit

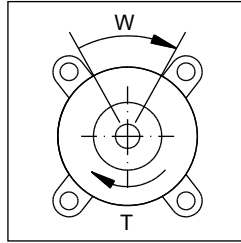
<b>F</b> N = force of weight on end of lever	<b>t</b> s = time taken to move this distance	<b>M</b> kg = mass
<b>L</b> m = effective length of lever	<b>w</b> rad/s = speed of rotation	<b>V</b> m/s = velocity of mass
<b>d</b> m = distance moved by end of lever	<b>T</b> Nm = torque applied to shaft	<b>f</b> Hz = frequency of vibration



#### 1 Steady movement in a straight line.

Required rate:

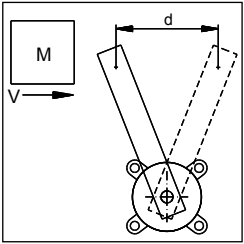
$$= \frac{FL^2t}{d} \text{ Nm/rad/s}$$



#### 2 Steady rotation.

Required rate:

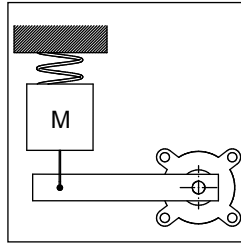
$$= \frac{T}{W} \text{ Nm/rad/s}$$



#### 3 Deceleration of mass moving in a straight line.

Required rate:

$$= \frac{MVL^2}{d} \text{ Nm/rad/s}$$



#### 4 Critical damping of vibrating mass.

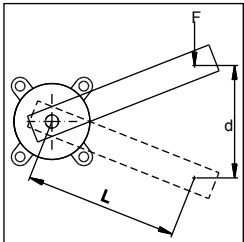
Required rate:

$$= \frac{MfL^2}{0.08} \text{ Nm/rad/s}$$

## English Units

### Given quantity and unit

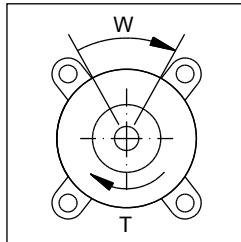
<b>F</b> lbf = force of weight on end of lever	<b>t</b> s = time taken to move this distance	<b>M</b> lbf = mass
<b>L</b> in = effective length of lever	<b>w</b> rad/s = speed of rotation	<b>V</b> in/s = velocity of mass
<b>d</b> in = distance moved by end of lever	<b>T</b> lbf.ins = torque applied to shaft	<b>f</b> Hz = frequency of vibration



#### 1 Steady movement in a straight line.

Required rate:

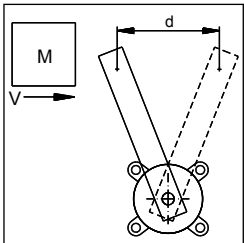
$$= \frac{FL^2t}{d} \text{ lbf.ins/rad/s}$$



#### 2 Steady rotation.

Required rate:

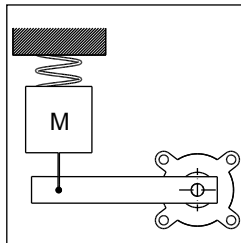
$$= \frac{T}{W} \text{ lbf.ins/rad/s}$$



#### 3 Deceleration of mass moving in a straight line.

Required rate:

$$= \frac{MVL^2}{386d} \text{ lbf.ins/rad/s}$$



#### 4 Critical damping of vibrating mass.

Required rate:

$$= \frac{MfL^2}{30.7} \text{ lbf.ins/rad/s}$$

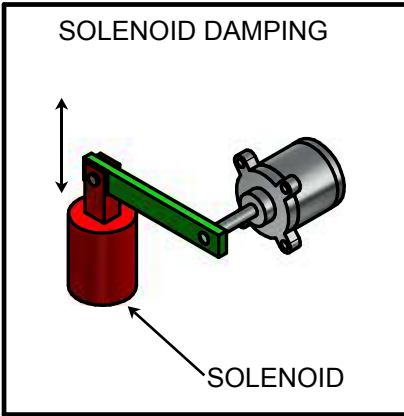
## Conversion factors

1 rad = 57.3°	1 RPM = 0.1047 rad/s	1 lbf.ins = 0.113 Nm
1 Nm = 8.85 lbf.ins	1 lbf = 4.45 N	9.81 N = 1 kgf = 1 kp

Sketches Showing Some Application Ideas

<p>CONTROL OF DESCENT</p> <p>PULLEY CR DASHPOT WEIGHT</p>	<p>DAMPING GIMBALS</p>	<p>TENSION ROLLER DAMPING</p>	<p>STEPPING MOTOR DAMPING</p> <p>CR DASHPOT MOTOR</p>
<p>VEHICLE LEVEL SENSOR HIGH FREQ. MOVEMENT DOES NOT TRIGGER SWITCHES</p> <p>SWITCH</p>	<p>DAMPING GEAR TRAIN VIBRATION</p> <p>MOTOR</p>	<p>DRIVING TAKE UP REEL</p> <p>CRD MOTOR</p>	<p>SOLENOID DAMPING</p> <p>SOLENOID</p>
<p>CONVEYOR ROLLER DAMPING</p>	<p>DAMPING SPRING LOADED ARM</p>	<p>HANGING CONVEYOR DAMPING</p>	<p>MANUAL CONTROL YOKE DAMPING</p>
<p>DAMPING ANTI-VIBRATION MOUNTING</p>	<p>DAMPING HIGH SPEED PAPER FEED</p>	<p>CARRIAGE END STOP DAMPING</p>	<p>INDEXING TABLE BOUNCE DAMPING</p>
<p>DAMPING UNBALANCED WEIGHTS</p>	<p>TURNSTILE MOTION CONTROL</p>	<p>PENDULUM SWING DAMPING</p>	<p>CAMERA PAN &amp; TILT JERK DAMPING</p>

### Solenoid Damping

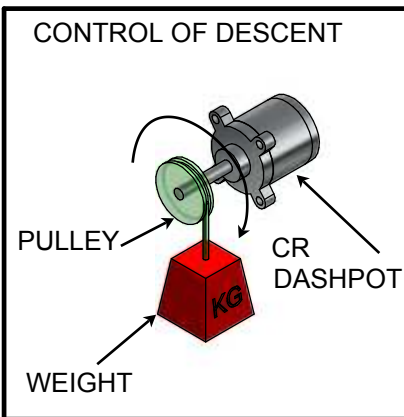


Solenoid force **F** = 10 N  
 Solenoid travel **d** = 25 mm = 0.025 m  
 Lever arm length **L** = 75 mm = 0.075 m  
 Travel time required **t** = 5 s

**Use Formula 1:** Rate =  $\frac{FL^2t}{d}$  =  $\frac{10 \times 0.075^2 \times 5}{0.025}$   
 = 11.2 Nm/rad/s (99 lbf.Ins/rad/s)

**Conclusion:** Use KD – A2

### Control of Descent

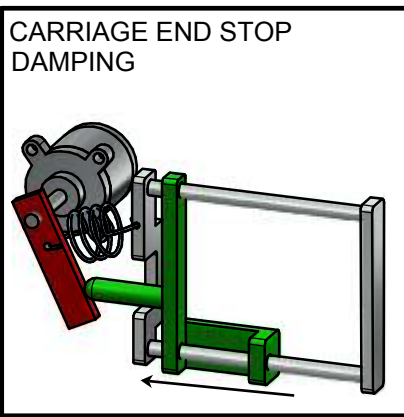


Weight = 1 kg  
 Pulley radius = 50 mm = 0.05 m  
 Speed required **V** = 100 mm/s = 0.1 m/s  
 Force **F** = 1 x 9.81 = 9.81 N  
 Torque **T** = 9.81 x 0.05 = 0.49 Nm  
 Speed of rotation **w** = 0.1 m/s ÷ 0.05 m = 2 rad/s

**Use Formula 2:** Rate =  $T/w$  = 0.49/2 = 0.245 Nm/rad/s  
 This is a CR dashpot application. Find point on the S – CRD graph for torque and speed

**Conclusion:** Use S – CRD – 30,000

### Carriage Mechanism End Stop Damping



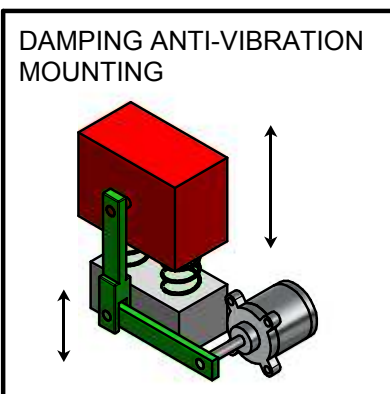
Carriage mass **M** = 10 kg  
 Velocity **V** = 1 m/s  
 Deceleration distance **d** = 50 mm = 0.05 m  
 Lever length **L** = 75 mm = 0.075 m

**Use Formula 3:** Rate =  $\frac{MVL^2}{d}$  =  $\frac{10 \times 1 \times 0.075^2}{0.05}$   
 = 1.1 Nm/rad/s (9.7 lbf.Ins/rad/s)

Check max. rotation speed = 1 m/s ÷ 0.075 m = 13.3 rad/s  
 Hence max. torque = 13.3 x 1.1 = 14.7 Nm (130 lbf.Ins)

**Conclusion:** Use KD – A1

### Damping Anti-Vibration Mounting

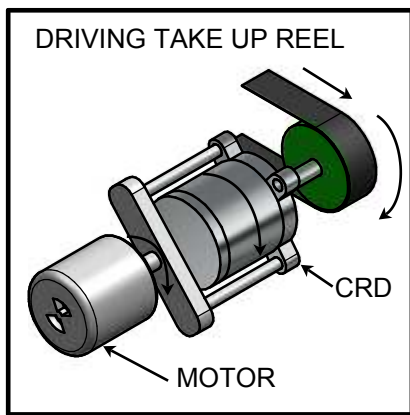


Mass **M** = 10 kg  
 Natural frequency **f** = 20 Hz  
 Lever length **L** = 100 mm = 0.10 m

**Use Formula 4:** Rate =  $\frac{MfL^2}{0.08}$  =  $\frac{10 \times 20 \times 0.1^2}{0.08}$   
 = 25 Nm/rad/s (220 lbf.Ins/rad/s)

**Conclusion:** Use KD – A3

Notes on Constant Tension Take Up Reel



A CR dashpot can be used as a slipping drive between a geared motor and a take up reel for winding tape or wire on to a reel. If sized correctly the tension in the tape can be maintained within reasonable limits for a ratio of maximum to minimum reel radius of up to 2.5. Difficulty sometimes arises because it is necessary to select the correct motor speed as well as dashpot rate.

**Suggested Procedure**

Given:           Tape linear speed **V**           m/s  
                   Required tension **f**           N  
                   Minimum reel radius **a**        m  
                   Maximum reel radius **b**        m

Required motor speed **n** =  $13 V/a$        rpm

Required damping rate **k** =  $\frac{400 f V}{n^2}$    Nm/rad/s

CR dashpot must give torque  $\frac{0.4 k V}{a}$

At a speed of 0.4 V/a rad/s.

Check max. Power dissipated =  $k(0.1n - V/b)^2 W$

This must be less than 10W for S – CRD and 40W for T – CRD.

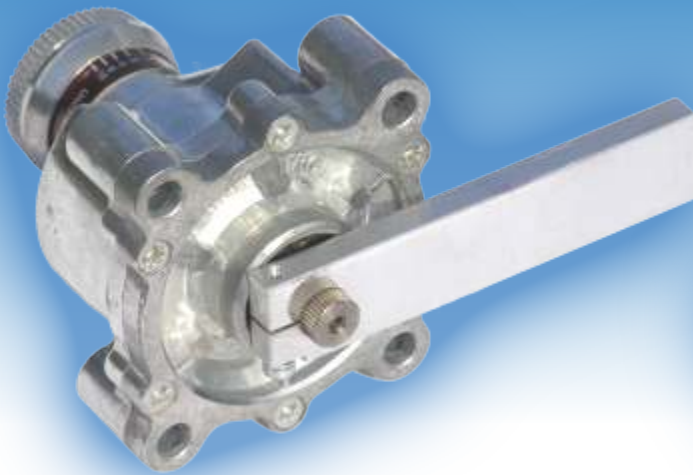
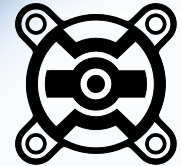
**SPECIAL DASHPOT QUESTIONNAIRE**

When standard dashpots are not suitable, special dampers (metal or plastic) may be offered for high volume applications. To engineer a special unit the following information is required:

- 1 \*Continuous rotation or reciprocating (state angle of travel) type.
- 2 \*Fixed rate or adjustable rate.
- 3 \*Unidirectional or bi-directional damping.
- 4 Maximum operating speed.
- 5 \*Maximum operating torque (for strength).
- 6 \*Nominal torque and tolerance at specified speed and at 20°C (for damping rate).
- 7 Maximum allowable frictional torque in each direction.
- 8 \*Maximum and minimum ambient temperatures.
- 9 \*Energy dissipation (watts).
- 10 \*Typical cycle description and period between cycles/sequences
- 11 \*Maximum acceptable dimensions.
- 12 Mounting arrangement, eg 2 or 4 lugs, clamped body, central or end flange.
- 13 Drive arrangement, eg male or female, square or round with splines or keyway.
- 14 Maximum side load.
- 15 Maximum end load.
- 16 Materials, eg zinc alloy, aluminium or acetal polymer.
- 17 Surface finish, eg natural or painted.
- 18 \*Maximum weight.
- 19 Any production test requirements.
- 20 \*Volume requirements.
- 21 \*Target unit price.
- 22 Storage periods and conditions.

The data marked with an \* is essential to initiate any study but all of the above data will be required before a product can be produced.





**Specification**

**Rate**  
**Fixed rate model KD-F**  
 Any value ( $\pm 10\%$ ) between:  
 min: 2.0 lbf.Ins/rad/s  
 0.22 Nm/rad/s  
 max: 4000 lbf.Ins/rad/s  
 450 Nm/rad/s  
**Adjustable rate model**  
 See opposite

**Angle of travel**  
 $60^\circ \pm \frac{1}{2}^\circ$   
 External end stops must be provided

**Max. safe torque**  
 250 lbf.ins / 28 Nm  
 Continuous power dissipation not to exceed 10W at 20°C ambient.

**Max. shaft end load**  
 10 lbf / 45 N

**Max. shaft side load**  
 40 lbf / 178 N

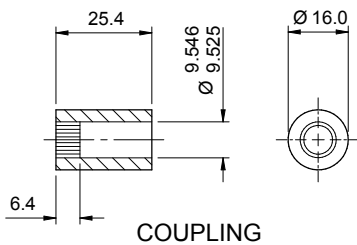
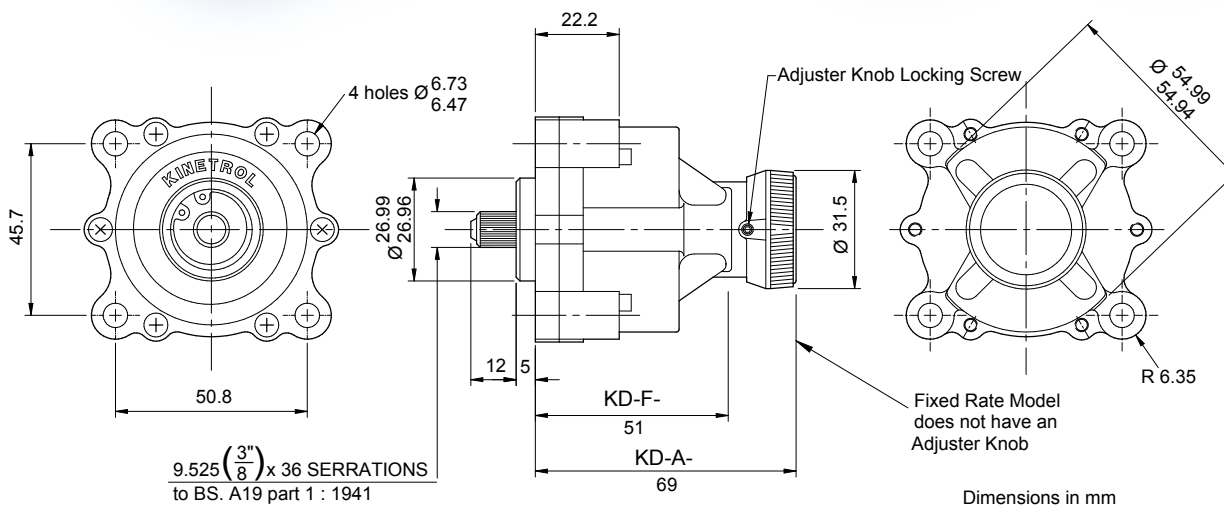
**Ambient temperature range**  
 0°C to 40°C

**Frictional torque**  
 0.01 lbf.ins / 0.001 Nm typical

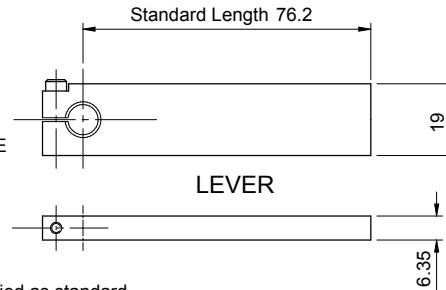
**Shaft material**  
 Stainless steel 431S29

**Body material**  
 Zinc alloy Mazak 3

**Weight**  
 KD - F 16.6 ozs / 472 g  
 KD - A 18.4 ozs / 522 g



LEVER OR COUPLING CAN BE POSITIONED TO WITHIN  $\pm 5^\circ$  OF TRAVEL (SERRATIONS ARE NOT ALIGNED TO ROTOR)



Lever and Coupling are optional and not supplied as standard.

**Adjustable Rate Model KD - A**

Has an adjuster which permits any damping rate to be obtained within one of the following ranges. This range must be specified when ordering the dashpot.

- **A1:** 0.8 to 10 lbf.ins/rad/s / 0.09 to 1.13 Nm/rad/s
- **A2:** 10 to 100 lbf.ins/rad/s / 1.13 to 11.3 Nm/rad/s
- **A3:** 100 to 1100 lbf.ins/rad/s / 11.3 to 124 Nm/rad/s
- **A4:** 260 to 2600 lbf.ins/rad/s / 29 to 293 Nm/rad/s

**Ordering Codes**

<b>Fixed Rate Model</b>	<b>Adjustable Rate Model</b>
KD - F (Rate) - DD	KD - A1, 2, 3 or 4 - DD
KD - F (Rate) - FC or FAC	KD - A1, 2, 3 or 4 - FC or FAC

**Options**

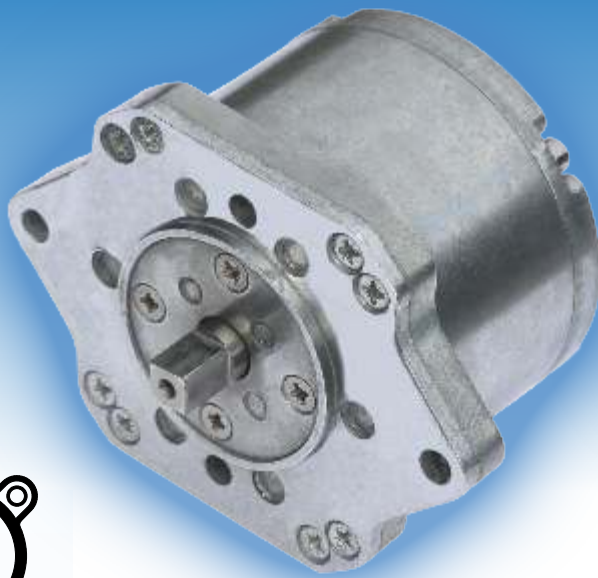
The following features may be specified for either model:

**Differential Rate (FC or FAC)**  
 Gives a large resistance in one direction only and less than 1/10 resistance in the other. Specify free clockwise or free anticlockwise when viewed from shaft end. Internal valves in this type of dashpot give slight backlash. If application demands, very low backlash valve may be fitted - consult Kinetrol.

**Double Damping (DD)**  
 Gives equal resistance in either direction. External end stops must be provided.

**Levers and Couplings**  
 Splined aluminium or steel levers and steel couplings are available as an option.

# Model LA 215° Vane Dashpot



## Specification

**Rate**  
Adjustable  
Max (LA4): 300 Nm/rad/s  
(2700 lbf.ins/rad/s)

**Angle of travel**  
215° ± 5°  
External end stops  
must be provided

**Max. safe torque**  
350 lbf.ins / 40 Nm  
Continuous power  
dissipation not to exceed  
10W at 20°C ambient

**Max. shaft end load**  
2 lbf / 10 N

**Max. shaft side load**  
100 lbf / 450 N

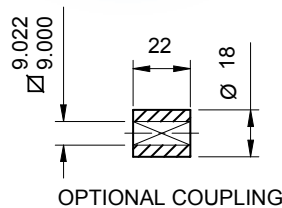
**Ambient temperature  
range**  
0°C to 60°C

**Frictional torque**  
2 lbf.ins / 0.2 Nm typical

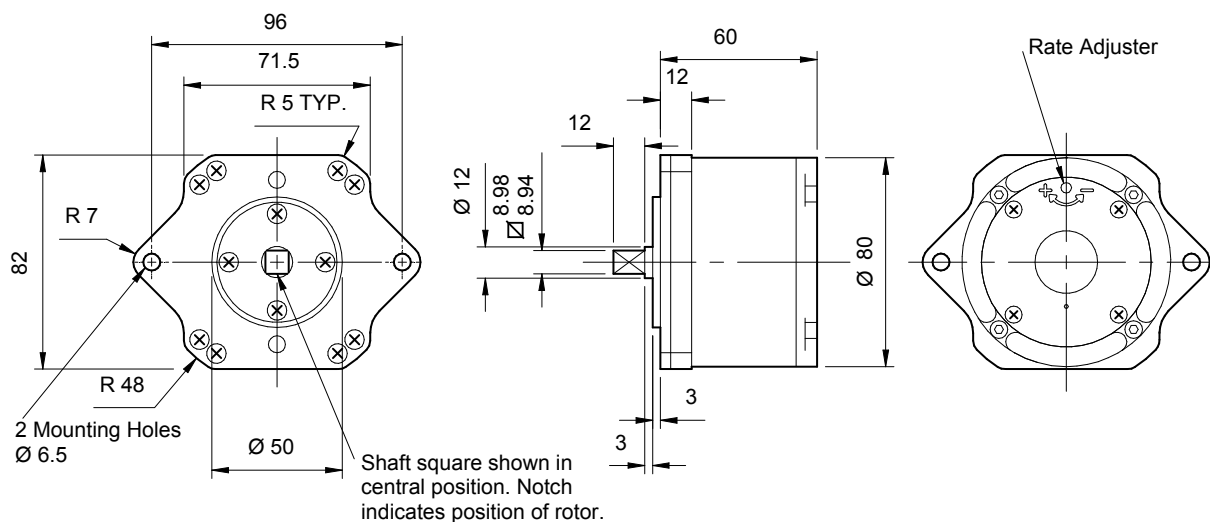
**Shaft material**  
Stainless steel 441S49

**Body material**  
Zinc alloy Ilzro 16

**Weight**  
3.6 lbs / 1.61 kg



Dimensions in mm



## Rates

An adjuster permits any damping rate to be obtained within one of the following ranges. The range must be specified when ordering the dashpot.

- **LA1:** 22 to 220 lbf.ins/rad/s / 2.5 to 25 Nm/rad/s
- **LA2:** 53 to 530 lbf.ins/rad/s / 6 to 60 Nm/rad/s
- **LA3:** 106 to 1060 lbf.ins/rad/s / 12 to 120 Nm/rad/s
- **LA4:** 266 to 2660 lbf.ins/rad/s / 30 to 300 Nm/rad/s

With adjuster set to maximum the rate may exceed stated maximum and with adjuster set to minimum the rate may be less than stated minimum.

## Options

The following features may be specified for any model:

### Differential Rate (FC or FAC)

Gives a large resistance in one direction only and less than 1/10 resistance in the other. Specify free clockwise or free anticlockwise when viewed from shaft end.

### Double Damping (DD)

Gives equal resistance in either direction.

### Couplings

Steel couplings are available as an option.

## Ordering Codes

LA1, 2, 3 or 4 – DD  
LA1, 2, 3 or 4 – FC or FAC



**Specification**

**Rate**  
Adjustable  
Max (LB4): 400 Nm/rad/s  
(3500 lbf.ins/rad/s)

**Angle of travel**  
240° ± 5°  
External end stops  
must be provided

**Max. safe torque**  
1400 lbf.ins / 160 Nm  
Continuous power  
dissipation not to exceed  
80W at 20°C ambient

**Max. shaft end load**  
5 lbf / 22 N

**Max. shaft side load**  
200 lbf / 890 N

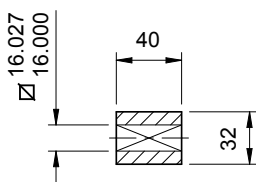
**Ambient temperature  
range**  
0°C to 60°C

**Frictional torque**  
5 lbf.ins / 0.5 Nm typical

**Shaft material**  
Stainless steel 441S49

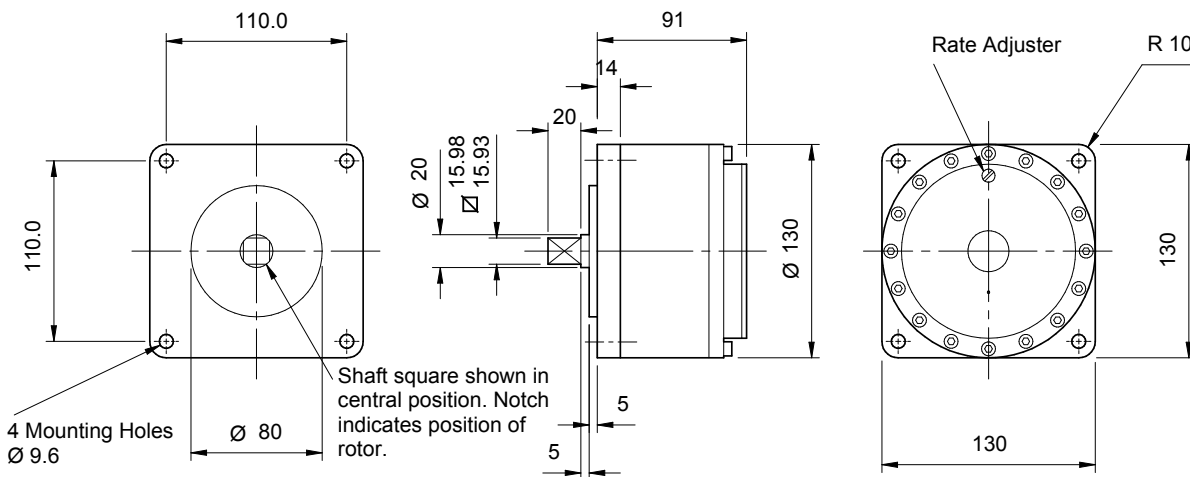
**Body material**  
Zinc alloy Ilzro 16

**Weight**  
13.5 lbs / 6.14 kg



OPTIONAL COUPLING

Dimensions in mm



**Rates**

An adjuster permits any damping rate to be obtained within one of the following ranges. The range must be specified when ordering the dashpot.

- **LB1:** 35 to 350 lbf.ins/rad/s / 4 to 40 Nm/rad/s
- **LB2:** 71 to 710 lbf.ins/rad/s / 8 to 80 Nm/rad/s
- **LB3:** 150 to 1500 lbf.ins/rad/s / 17 to 170 Nm/rad/s
- **LB4:** 350 to 3500 lbf.ins/rad/s / 40 to 400 Nm/rad/s

With adjuster set to maximum the rate may exceed stated maximum and with adjuster set to minimum the rate may be less than stated minimum.

**Options**

The following features may be specified for any model:

**Differential Rate (FC or FAC)**

Gives a large resistance in one direction only and less than 1/10 resistance in the other. Specify free clockwise or free anticlockwise when viewed from shaft end.

**Double Damping (DD)**

Gives equal resistance in either direction.

**Couplings**

Steel couplings are available as an option.

**Ordering Codes**

- LB1, 2, 3 or 4 – DD
- LB1, 2, 3 or 4 – FC or FAC



# Model LE 220° Vane Dashpot



## Specification

**Rate**  
Adjustable  
Max (LE6):  
12000 Nm/rad/s  
(106200 lbf.ins/rad/s)

**Angle of travel**  
220° ± 1°  
External end stops  
must be provided

**Max. safe torque**  
4820 lbf.ins / 545 Nm  
Continuous power  
dissipation not to exceed  
200W at 20°C

**Max. shaft end load**  
224 lbf / 1000 N pushing  
on shaft  
18 lbf / 80 N pulling  
on shaft

**Max. shaft side load**  
340 lbf / 1500 N

**Ambient temperature  
range**  
0°C to 60°C

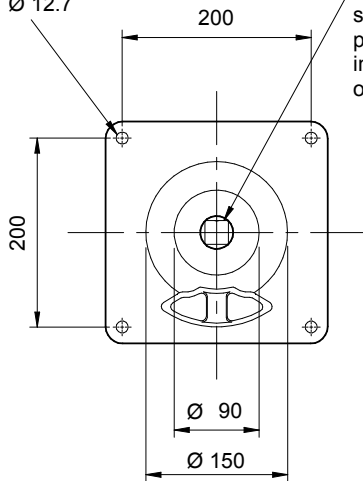
**Frictional torque**  
27 lbf.ins / 3 Nm typical

**Shaft material**  
Stainless steel 431S29

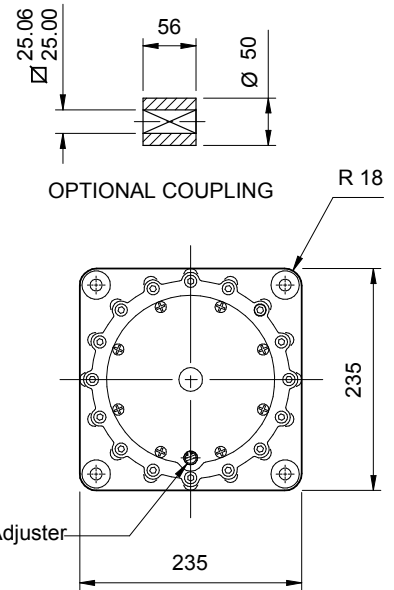
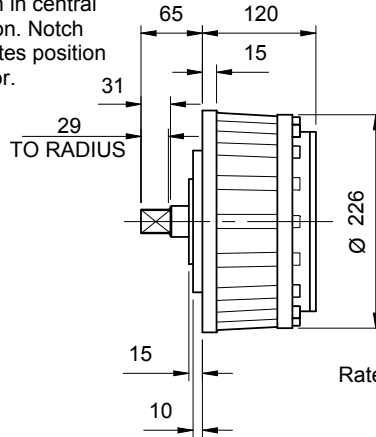
**Body material**  
Aluminium alloy LM25

**Weight**  
26 lbs / 12 kg

4 Mounting Holes  
Ø 12.7



Shaft Square  
shown in central  
position. Notch  
indicates position  
of rotor.



## Rates

An adjuster permits any damping rate to be obtained within one of the following ranges. The range must be specified when ordering the dashpot.

- **LE1:** 443 to 3100 lbf.ins/rad/s / 50 to 350 Nm/rad/s
- **LE2:** 885 to 6200 lbf.ins/rad/s / 100 to 700 Nm/rad/s
- **LE3:** 1770 to 13275 lbf.ins/rad/s / 200 to 1500 Nm/rad/s
- **LE4:** 3540 to 26550 lbf.ins/rad/s / 400 to 3000 Nm/rad/s
- **LE5:** 7080 to 53100 lbf.ins/rad/s / 800 to 6000 Nm/rad/s
- **LE6:** 14160 to 106200 lbf.ins/rad/s / 1600 to 12000 Nm/rad/s

With adjuster set to maximum the rate may exceed stated maximum and with adjuster set to minimum the rate may be less than stated minimum.

## Options

The following features may be specified for any model:

### Differential Rate (FC or FAC)

Gives a large resistance in one direction only and less than 1/10 resistance in the other. Specify free clockwise or free anticlockwise when viewed from shaft end.

### Double Damping (DD)

Gives equal resistance in either direction.

### Couplings

Steel couplings are available as an option.

## Ordering Codes

LE1, 2, 3, 4, 5 or 6 – DD

LE1, 2, 3, 4, 5 or 6 – FC or FAC

# Model LX & LH 220° Vane Dashpots



## Specification

**LX**  
Rate  
Adjustable  
Max 18000 Nm/rad/s  
(159300 lbf.ins/rad/s)

**Angle of travel**  
220° ± 1°  
External end stops  
must be provided

**Max. safe torque**  
5660 lbf.ins / 640 Nm

**Ambient temperature range**  
0°C to 60°C

**Shaft material**  
Stainless steel 431S29

**Body material**  
Aluminium alloy LM25

**Weight**  
99 lbs / 45 kg

**LH**  
Rate  
Adjustable  
Max 18000 Nm/rad/s  
(159300 lbf.ins/rad/s)

**Angle of travel**  
220° ± 1°  
External end stops  
must be provided

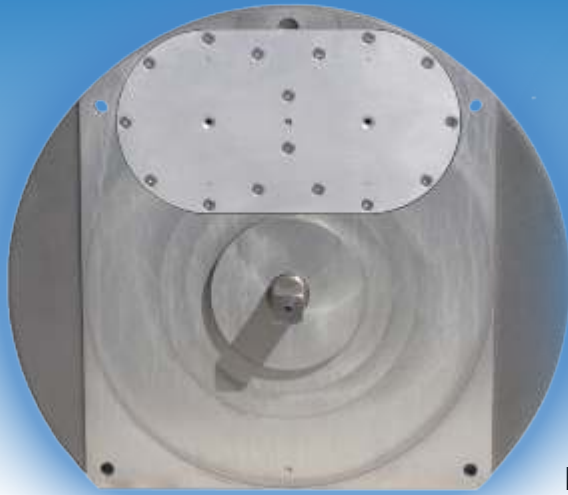
**Max. safe torque**  
8500 lbf.ins / 960 Nm

**Ambient temperature range**  
0°C to 60°C

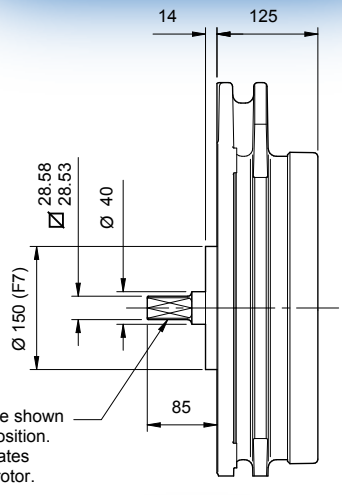
**Shaft material**  
Stainless steel 431S29

**Body material**  
Aluminium alloy LM25

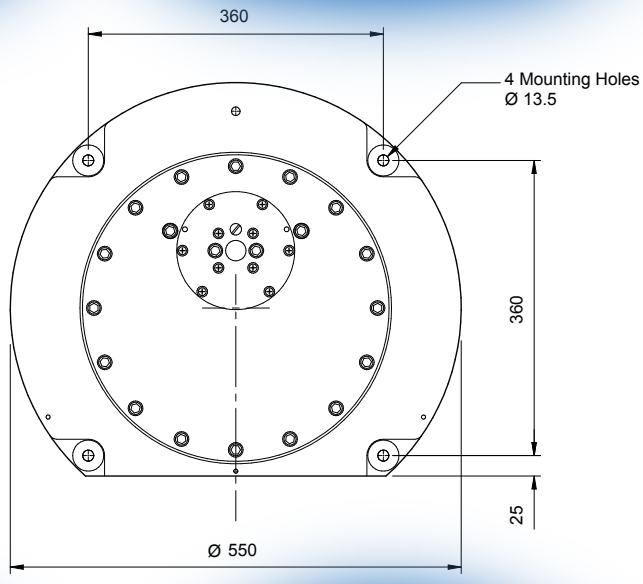
**Weight**  
108 lbs / 49 kg



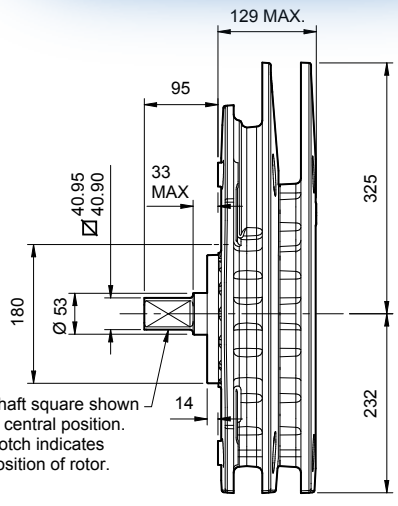
LX



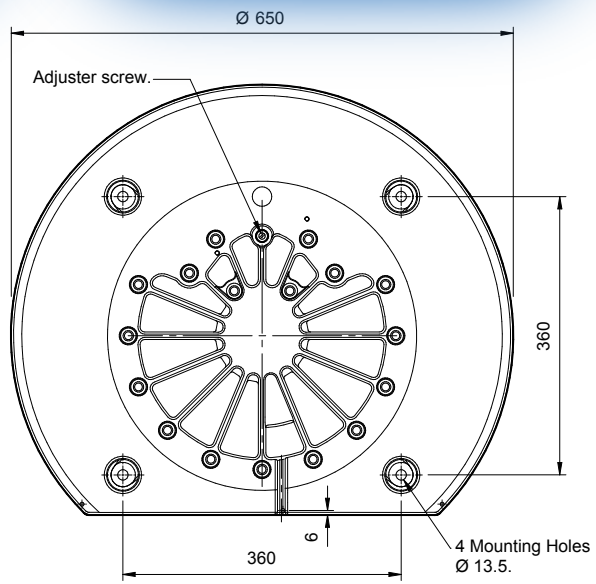
Shaft square shown  
in central position.  
Notch indicates  
position of rotor.



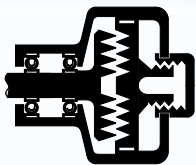
LH



Shaft square shown  
in central position.  
Notch indicates  
position of rotor.



# Model S - CRD CR Dashpot



## Specification

### Rate

Adjustable - see curves right ( $\pm 10\%$ )

Adjustment allows the rate to be varied down to  $\frac{1}{10}$  of the maximum values, for any speed of rotation.

The adjuster knob, although marked for reference, is not normally calibrated.

Adjuster knob variations available - contact Kinetrol

**Max. safe torque**  
61 lbf.ins / 7 Nm

**Max. shaft end load**  
20 lbf / 89 N

**Max. shaft side load**  
26 lbf / 115 N

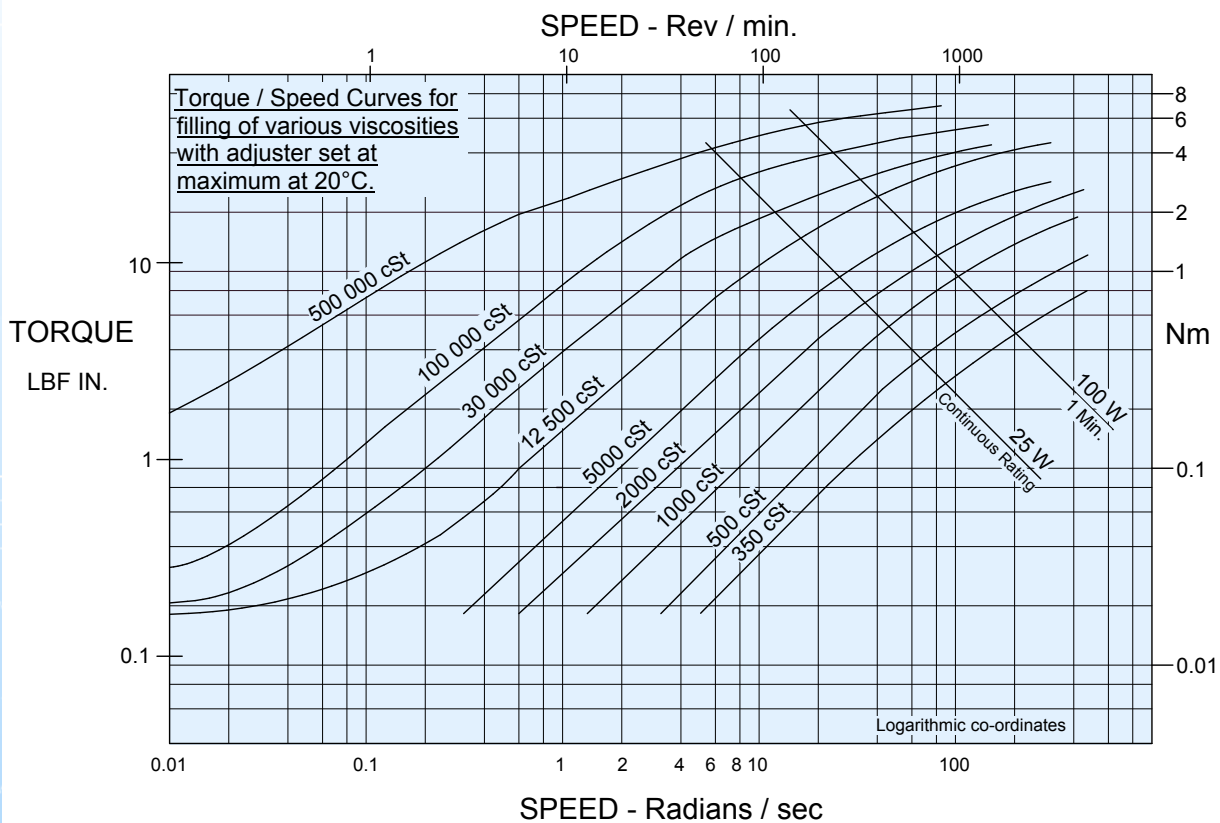
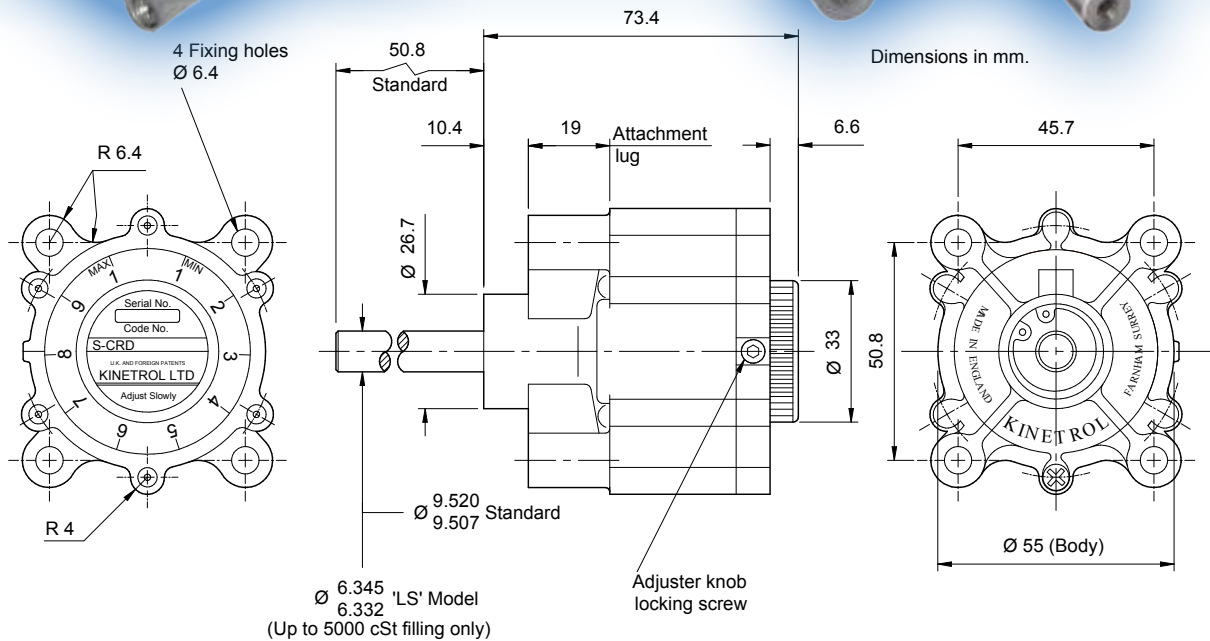
**Ambient temperature range**  
0°C to 60°C

**Frictional torque**  
0.13 lbf.ins / 0.015 Nm typical

**Shaft material**  
Stainless steel 303S31

**Body material**  
Zinc alloy Mazak 3

**Weight**  
1.32 lbs / 619 g



## Viscosities Available

350; 500; 1,000; 2,000; 5,000; 12,500; 30,000; 100,000; 500,000 cSt.

Specification of fluid viscosity provides torque/speed characteristics shown by the curves above.

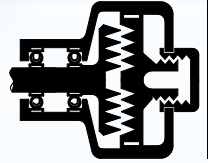
## Ordering Codes

**S - CRD - (Filling Viscosity)**

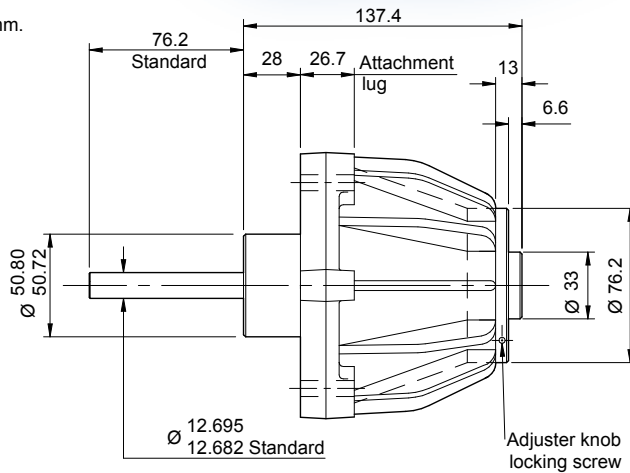
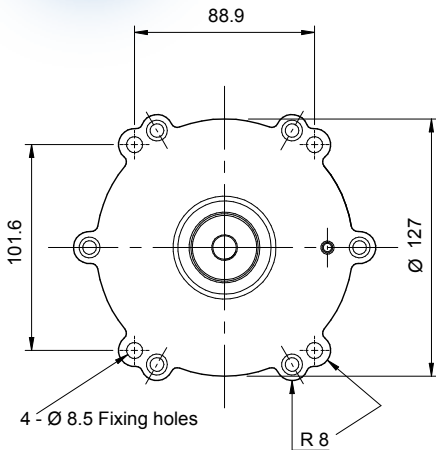
**Example:**

S - CRD - 30,000 has a 30,000 cSt filling.

# Model T – CRD CR Dashpot



Dimensions in mm.



## Specification

### Rate

Adjustable - see curves left ( $\pm 10\%$ )

Adjustment allows the rate to be varied down to 1/4 of the maximum values, for any speed of rotation.

The adjuster knob, although marked for reference, is not normally calibrated.

Fixed rate version available - contact Kinetrol

**Max. safe torque**  
398 lbf.ins / 45 Nm

**Max. shaft side load**  
41 lbf / 183 N

**Ambient temperature range**  
0°C to 60°C

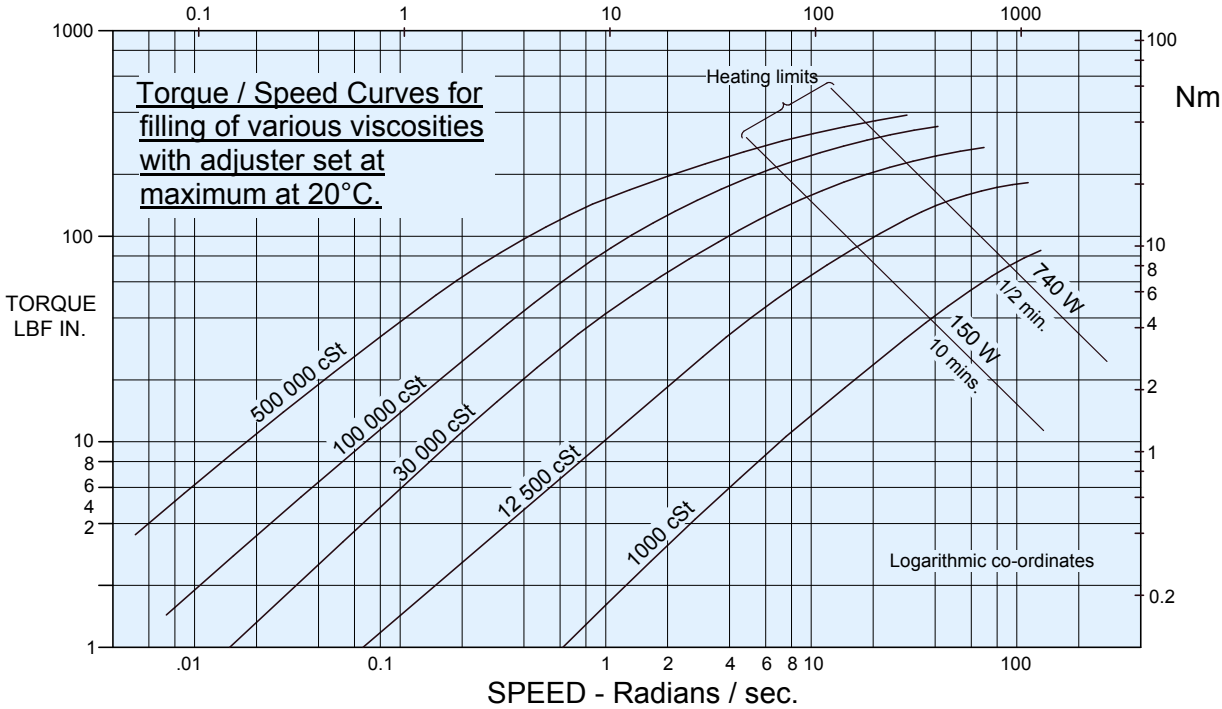
**Frictional torque**  
0.5 lbf.ins / 0.056 Nm typical

**Shaft material**  
High tensile steel  
605M36(T)

**Body material**  
Cast Aluminium LM 4M

**Weight**  
5.27 lbs / 2.39 kg

## SPEED - Rev. / min



## Viscosities Available

1,000; 12,500; 30,000; 100,000; 500,000 cSt.

Specification of fluid viscosity provides torque/speed characteristics shown by the curves above.

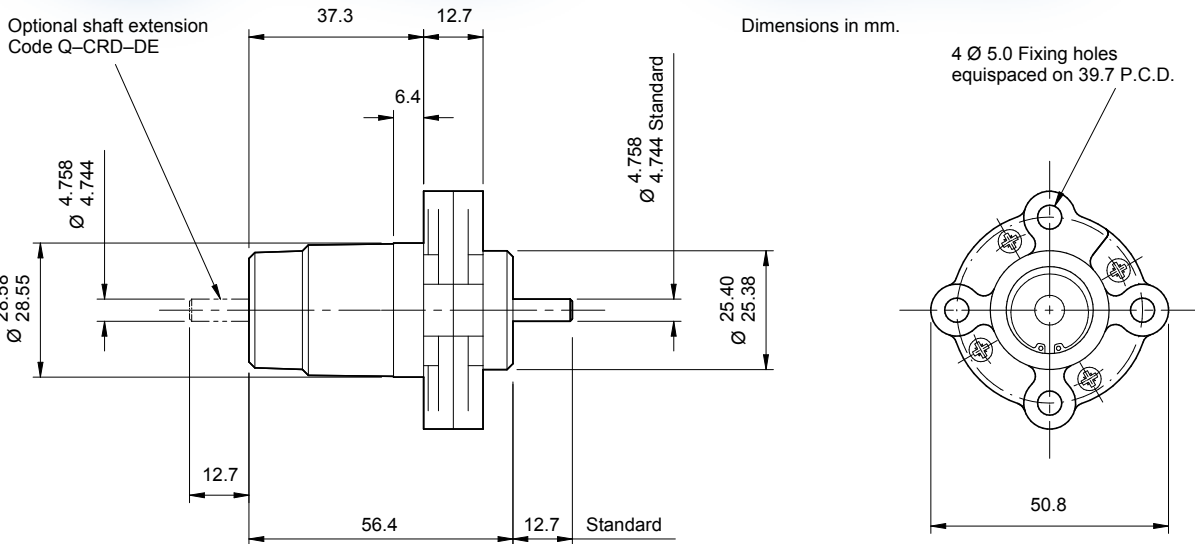
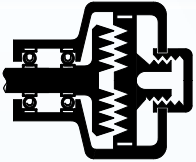
## Ordering Codes

T – CRD – (Filling Viscosity)

**Example:**

T – CRD – 100,000 has a 100,000 cSt filling.

# Model Q - CRD CR Dashpot



## Specification

**Rate**  
Fixed - see curves right  
(± 10%)

**Max. safe torque**  
13 lbf.ins / 1.5 Nm

**Max. shaft end load**  
20 lbf / 89 N

**Max. shaft side load**  
5.2 lbf / 23 N

**Ambient temperature range**  
0°C to 60°C

**Frictional torque**  
0.025 lbf.ins / 0.003 Nm typical

**Shaft material**  
Mild steel 220M07

**Body material**  
Zinc alloy Mazak 3

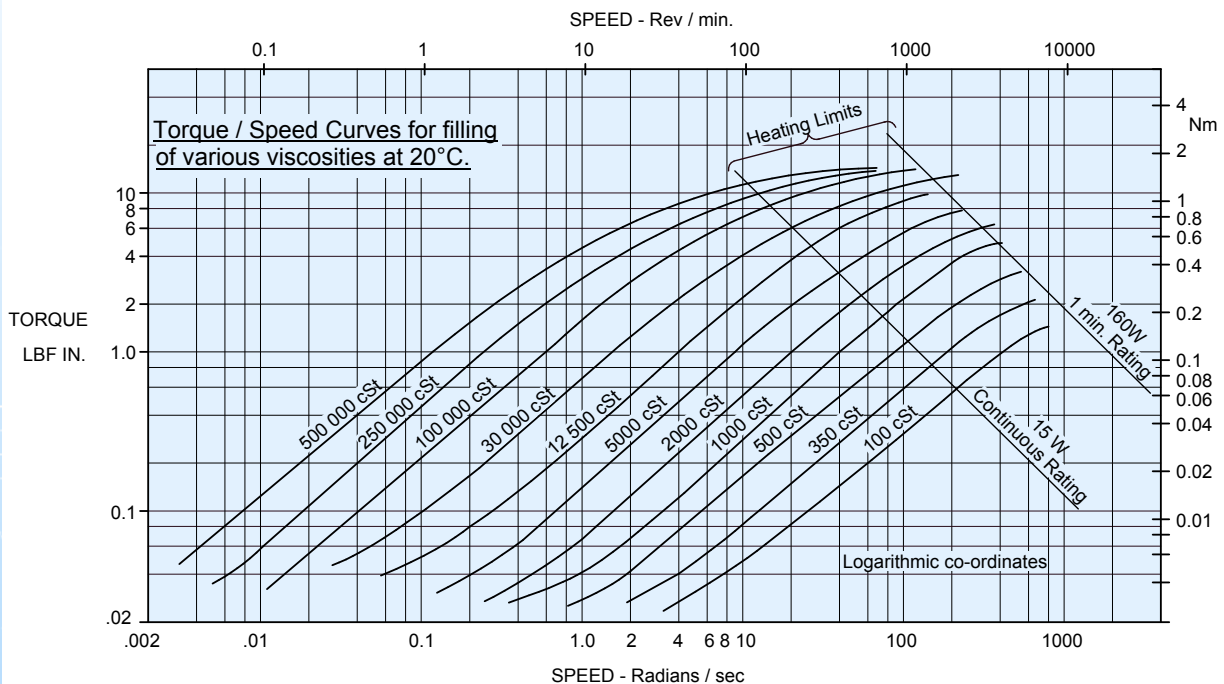
**Weight**  
7.5 ozs / 214 g

## Applications

Proves to be economical where use of the larger adjustable rate models may not be justified.

This dashpot is available with double ended shaft (code suffix -DE). In this version, due to the extra shaft seal, there is greater stiction torque (less than 0.025 lbf.ins/seal).

## Applications



## Viscosities Available

100; 350; 500; 1,000; 2,000; 5,000; 12,500; 30,000; 100,000; 250,000; 500,000 cSt.

Specification of fluid viscosity provides torque/speed characteristics shown by the curves above.

## Ordering Codes

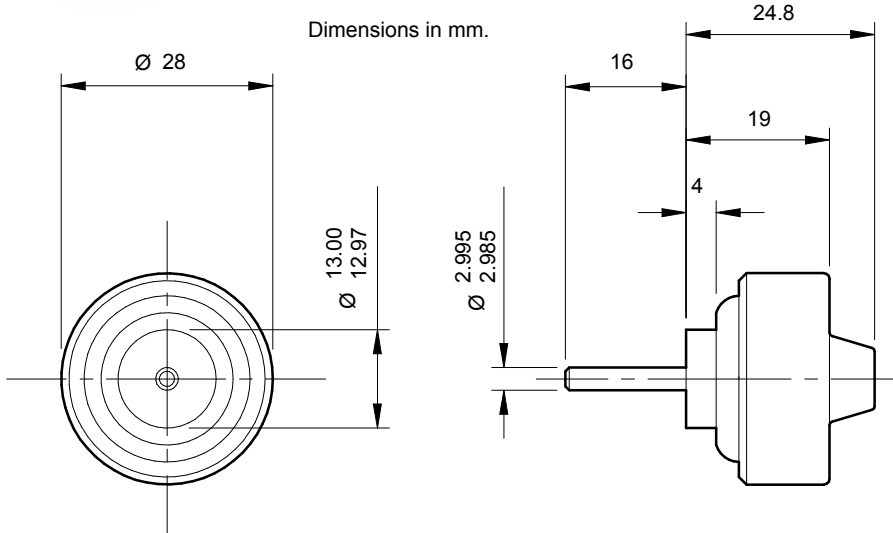
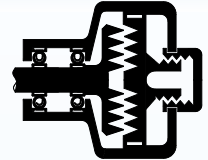
**Q - CRD - (Filling Viscosity)**

**Example:**

Q - CRD - DE - 12,500 is double ended and has a 12,500 cSt filling.



# Model N - CRD CR Dashpot



## Specification

**Rate**  
Fixed - see curves left  
( $\pm 10\%$ )

**Max. safe torque**  
3.5 lbf.ins / 0.4 Nm

**Max. shaft end load**  
3 lbf / 13 N

**Max. shaft side load**  
2.2 lbf / 10 N

**Ambient temperature range**  
0°C to 60°C

**Low frictional torque**  
0.015 lbf.ins / 0.002 Nm  
typical

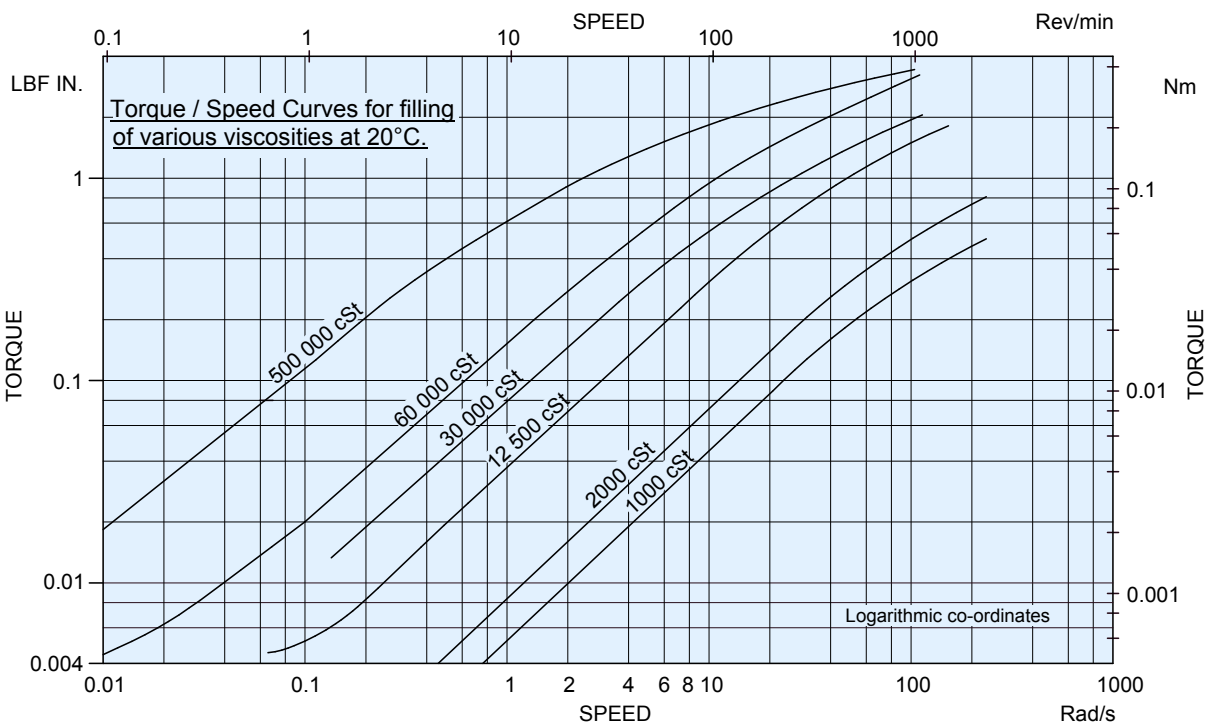
**Shaft material**  
Stainless steel 431S29

**Body material**  
Zinc alloy Mazak 3

**Weight**  
0.075 lbs / 34 g

### Applications

Particularly suited to instrument and small precision machine applications. Pure viscous damping is produced by shear of a film of silicone fluid. The drum type rotor is supported at both ends by miniature ball races. Typical applications include tension control, damping moving parts in small precision machines and detection of shaft rotation.



### Viscosities Available

1,000; 2,000; 5,000; 12,500; 30,000; 60,000; 500,000 cSt.

Specification of fluid viscosity provides torque/speed characteristics shown by the curves above.

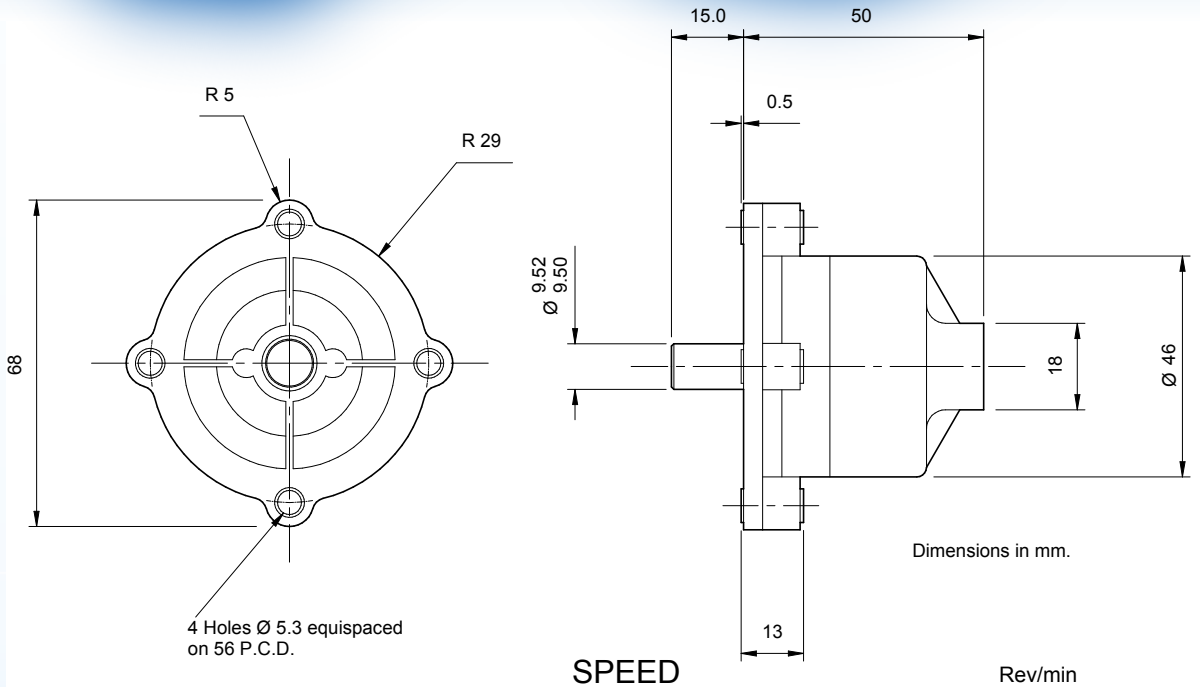
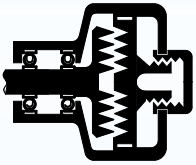
### Ordering Codes

**N - CRD - (Filling Viscosity)**

**Example:**

N - CRD - 60,000 has a 60,000 cSt filling.

# Model X - CRD CR Dashpot



## Specification

### Rate

Fixed - see curves right  
( $\pm 10\%$ )

### Max. safe torque

53 lbf.ins / 6 Nm

### Ambient temperature range

0°C to 60°C

### Frictional torque

0.3 lbf.ins / 0.034 Nm typical

### Shaft material

Mild steel 080A15 (case hardened). The shaft can be supplied unhardened.

### Body material

Zinc alloy Mazak 3

### Weight

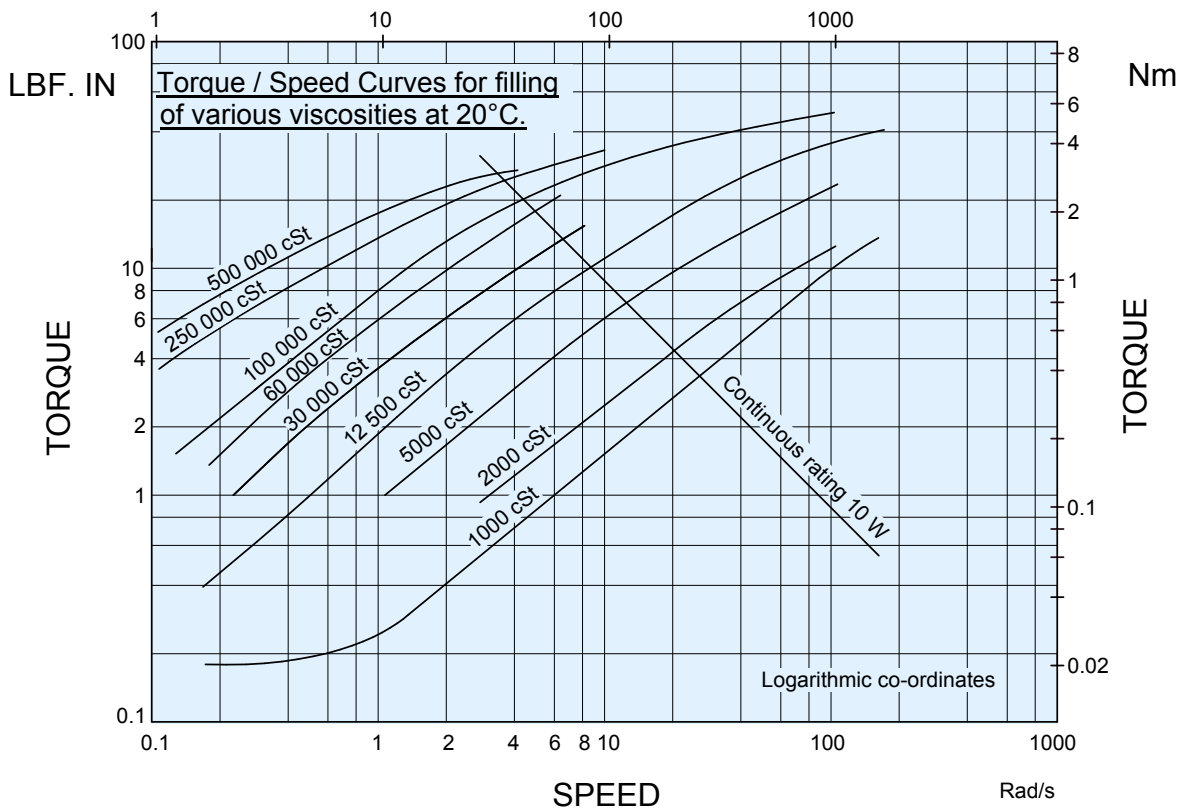
0.78 lbs / 355 g

### Bearing

Single overhung anti-friction bush

### Applications

Value engineered to suit volume applications where unit cost is of paramount importance. Viscous damping is produced by shear of a film of silicone fluid, using a drum type rotor. Static friction is higher than for other dashpots in the range but is not significant for most applications. The dashpot is designed to react pure torsion and therefore side or axial loads should be avoided. Typical applications include damping moving parts in light machinery, e.g. Copying machines, control of coil dereeling, control of descent.



## Viscosities Available

1,000; 2,000; 5,000; 12,500; 30,000; 60,000; 100,000; 250,000; 500,000 cSt.

Specification of fluid viscosity provides torque/speed characteristics shown by the curves above.

## Ordering Codes

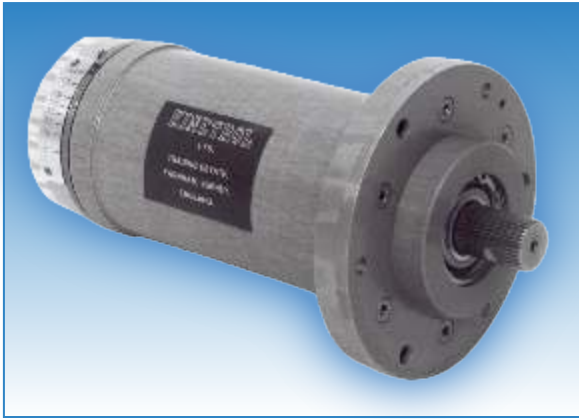
X - CRD - (Filling Viscosity)

Example:

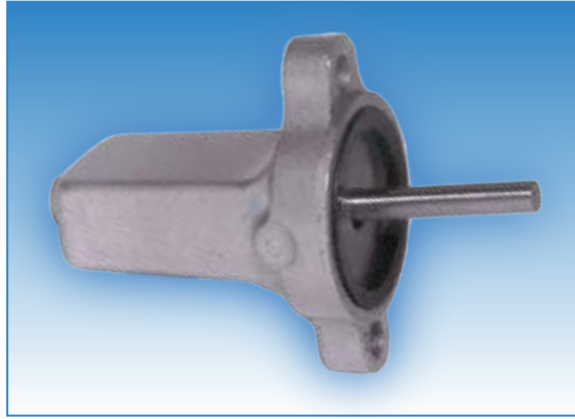
X - CRD - 12,500 has a 12,500 cSt filling.

## Special Dashpots

If required Kinetrol will engineer special dampers to your specification. Some examples of dashpots designed to suit customers applications are shown here. See special dashpot questionnaire on page 7.



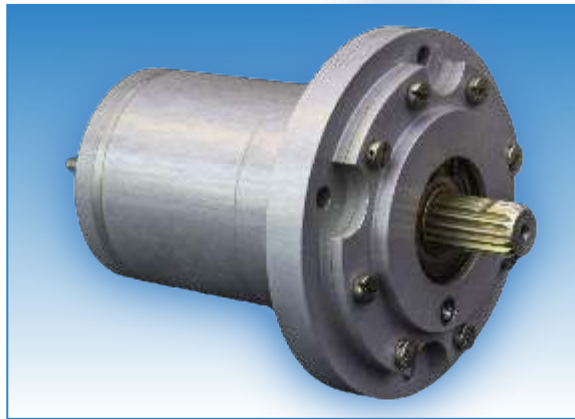
Aerospace flight control dashpot. 120° travel vane type with 200mm long light alloy body.



Automotive level sensor damper. 50mm long diecast small angle vane type.

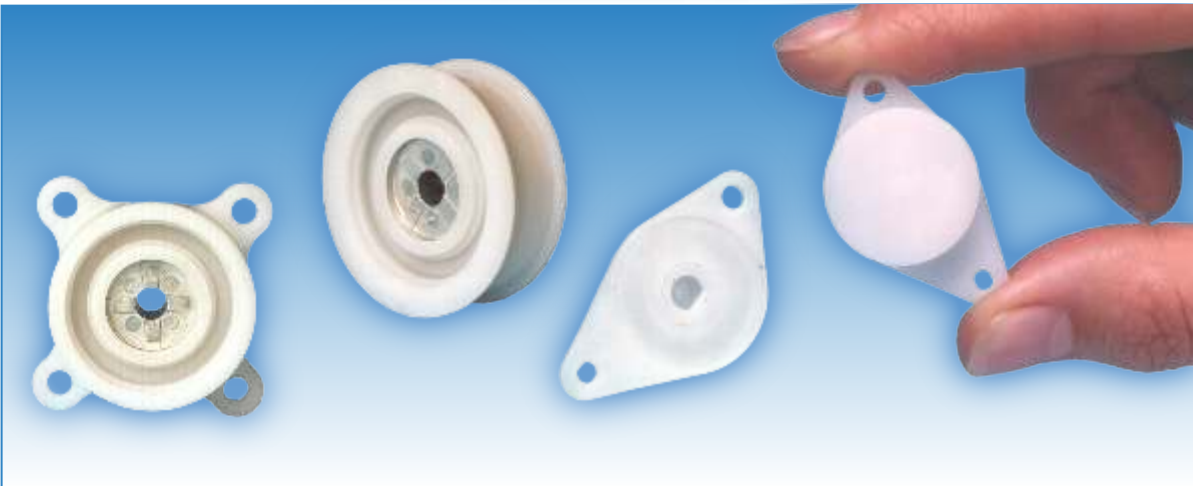


Aerospace aileron trim control dashpot. Continuous rotation type with integral fluid loss indication.



Aerospace elevator G-weight control damper. 120° travel vane type with integral temperature compensation.

## Plastic Dashpots



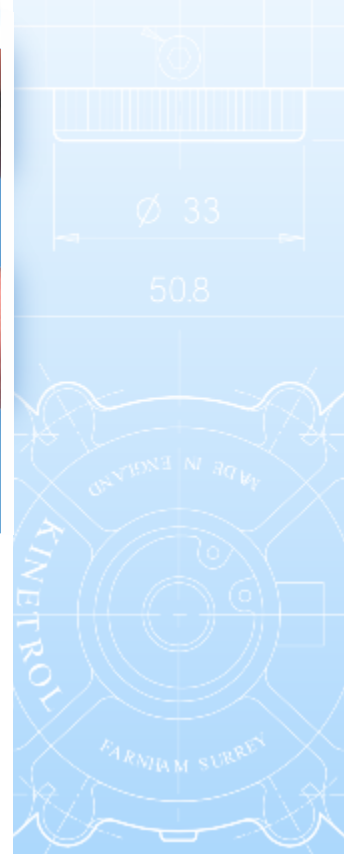
To compliment its range of robust, precision dashpots Kinetrol has also custom-designed plastic dampers for high volume, low cost applications.

Injection moulding in acetal or other materials facilitates a wide range of drive and mounting options.

Hybrid designs, with some metal components, can also be engineered where strength and/or longer life are required.

Example specification:

Continuous rotation type  
 Uni-directional damping  
 0.08 ± 20% Nm/rad/sec rate  
 45mm diameter x 17mm dimensional envelope  
 25g weight  
 0 - 40°C ambient temperature range



**Austria**

Dietrich Schwabe GmbH  
Einsteinstrasse 26  
D-64859 Eppertshausen  
Deutschland  
Tel - (49) 6071 922290  
Fax- (49) 6071 9222911  
email - info@schwabe-sra.de

**Belgium**

NV Prodim SA  
Av. Antoon Van Osslaan 1/20  
B-1120 Neder-over-Heembeek  
Tel - 02 726 3300  
Fax- 02 726 3633  
email - info@prodim.biz

**China**

Shanghai Kinetrol  
Control Equipment Co. Ltd.  
Building 112 (G1)  
456 Dieqiao Road, Kangqiao Town  
Pudong New District  
Shanghai 201315  
Tel - 21 5431 2366  
Fax- 21 5431 2399  
email - kinetrolchina@sohu.com

**France**

Kinetrol Sarl  
Actigone 3 - BP1028  
74966 MEYTHET cedex  
Tel - 0450 22 19 26  
Fax- 0450 22 31 54  
email - kinetrol@kinetrol.fr

**Germany**

Dietrich Schwabe GmbH  
Einsteinstrasse 26, D-64859  
Eppertshausen  
Tel - 6071 922290  
Fax- 6071 9222911  
email - info@schwabe-sra.de

**Italy**

Bellkin S.R.L.  
Via Trieste, 60/E  
20821 - Meda - MB  
Tel - 0362 330269  
Fax- 0362 327069  
email - info@bellkin.com

**Japan**

Misaki Engineering Co. Ltd  
130-42 #321, Nagasone, Kita-Ku,  
Sakai-shi, Osaka, 591-8025  
Tel - 72275 7723  
Fax- 72275 7737  
email - info@misaki-engineering.co.jp

**Mexico**

ERCO Equipos Refacciones y  
Controles de Occidente  
S.A. de C.V.  
No. 904 Fracc Zenzontle. 8 de Julio  
C.P. 44910, Guadalajara, Jalisco  
Tel - 33 3810 4714  
- 33 3812 2617  
- 33 3812 4428  
Fax- 33 3810 1080  
email - octavio@erco.com.mx

**Poland**

Dietrich Schwabe GmbH  
Einsteinstrasse 26  
D-64859 Eppertshausen  
Deutschland  
Tel - (49) 6071 922290  
Fax- (49) 6071 9222911  
email - info@schwabe-sra.de

**Spain**

Kinetrol SLU  
C/Salmeron, 250  
08226-Terrassa, Barcelona  
Tel - 93 7862496  
Fax- 93 7851368  
email - kinetrol@kinetrol.es

**Switzerland**

Dietrich Schwabe GmbH  
Einsteinstrasse 26  
D-64859 Eppertshausen  
Deutschland  
Tel - (49) 6071 922290  
Fax- (49) 6071 9222911  
email - info@schwabe-sra.de

**USA - Kansas**

Efdyn Incorporated  
7734 East 11th Street, Tulsa  
Oklahoma 74112-5718  
Tel - 918 838 1170  
Fax- 918 835 3334  
email - sales@efdyn.com

**USA - Northern Illinois**

RMH Controls  
1300 West Main Street  
Lake Geneva  
WI 53147  
Tel - 262 249 1950  
Fax- 262 249 1196  
email - info@rmhcontrols.com

**USA - Ohio**

Ohio Fluid Power Inc.  
3660 Center Road  
#305 Brunswick, OH 44212  
Tel - 440 238 5656  
Fax- 440 238 1466  
email - ohiofluid@aol.com

**USA - Oklahoma**

Efdyn Incorporated  
7734 East 11th Street, Tulsa  
Oklahoma 74112-5718  
Tel - 918 838 1170  
Fax- 918 835 3334  
email - sales@efdyn.com

**All other locations please contact Kinetrol at the address below**

# KINETROL

Distributed by:

Kinetrol Ltd, Trading Estate, Farnham, Surrey, GU9 9NU, England  
Telephone: +44 (0)1252 733838 Fax: +44 (0)1252 713042  
www.kinetrol.com e-mail: sales@kinetrol.com

Kinetrol is a registered trade mark Copyright 2015 Kinetrol Ltd