

Company presentation





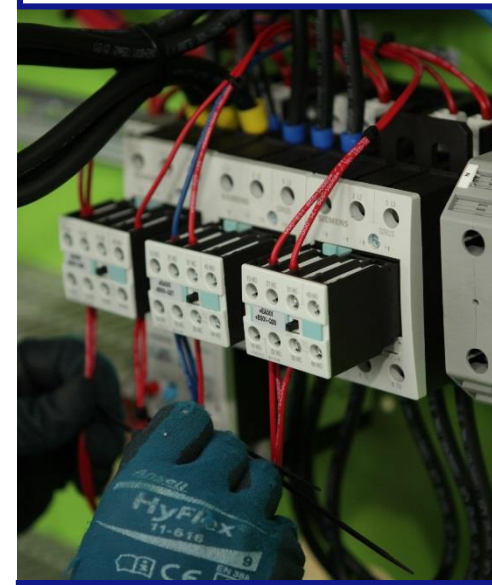
Production of
optoelectronic and
magnetic encoders



CNC machining



Mechanical and
electrical assembly



**Production area
2 050 m²**



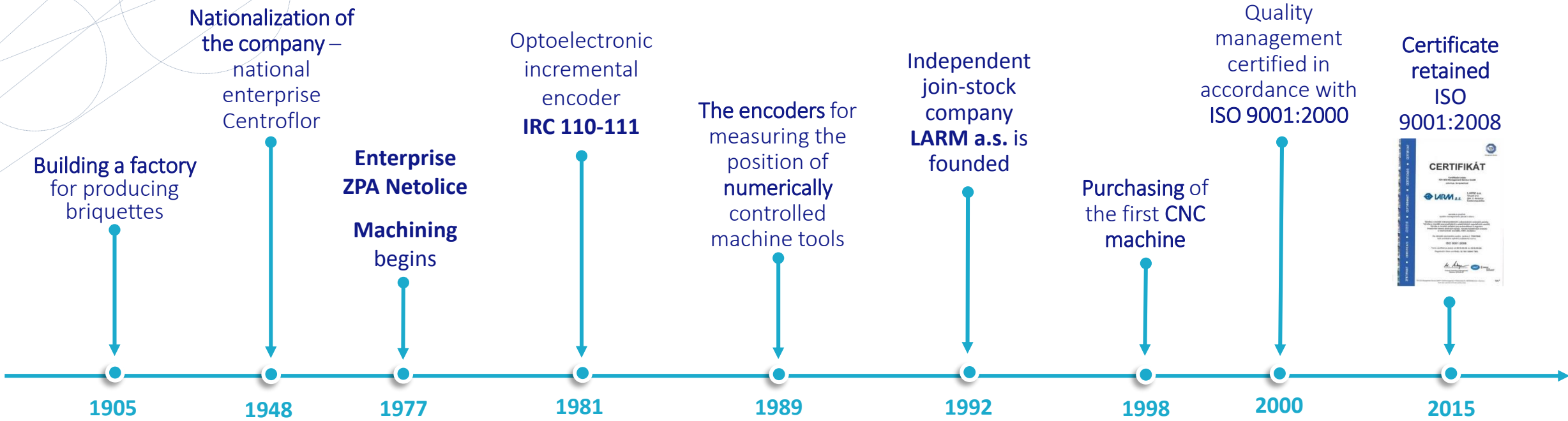
85 employees



**Premises with an
area of
24 000m²**

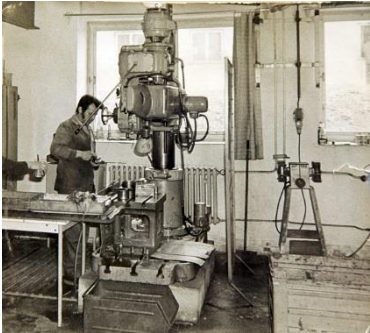


Company History



Building a factory

Join-stock company LARM a.s.



ENCODERS, PROBES

Optoelectronic (absolute/incremental) and magnetic (absolute/incremental), dual encoders, measuring probes, draw wire encoders, hand wheels and electrical power units

Accessories:

Connectors, encoder holders, encoder clips, pinions, connection cables



CNC Turning CNC Milling

We process the following materials:

- Free machining steel
- Carbon steel
- Stainless steel
- Bronze
- Copper
- Brass
- Aluminium
- Cast-iron
- Plastic
- Including casting and forgings



In cooperation we provide the following surface treatments:

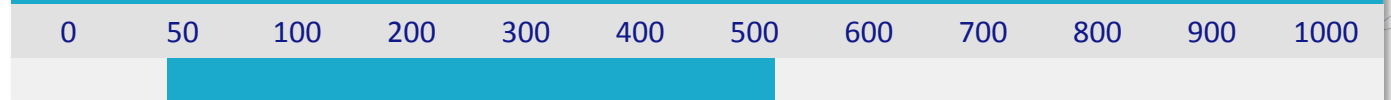
- Case-hardening
- Tempering
- Powder coating
- Anodising
- Galvanising
- Blackening
- Silvering
- Plasma nitriding
- Engraving
- Tumbling



Production possibility:

	Max. workpiece weight	Max. workpiece dimension	Machines
CNC turning	20 kg	Ø 300 mm	OKUMA, GILDEMEISTER (7 machines)
CNC milling	20 kg	700 mm x 450 mm 900 mm x 600 mm	MCV – MAS (6 machines) (2 machines)

Optimal production quantity (pcs)

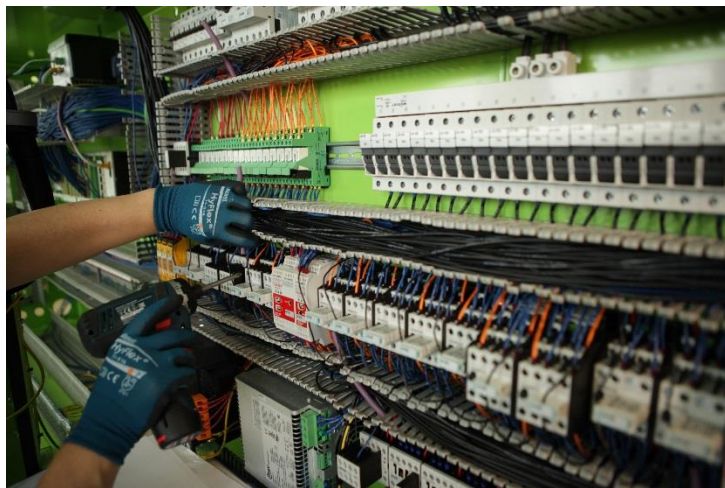




MECHANICAL AND ELECTROTECHNICAL ASSEMBLY

Assembly of precision mechanics and the assembly units, the production of connecting cables or cable harnesses, PCB assembly, distribution boards.

- Assembly area 360 m²
- ESD area 150 m²

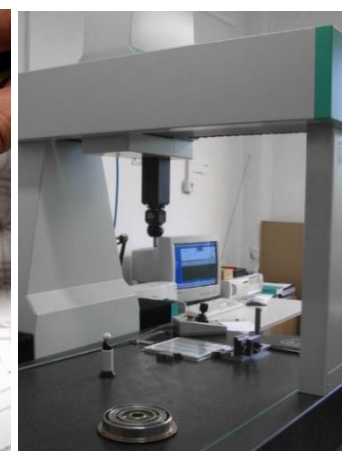
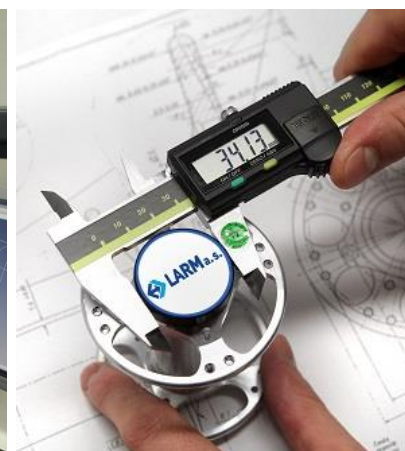
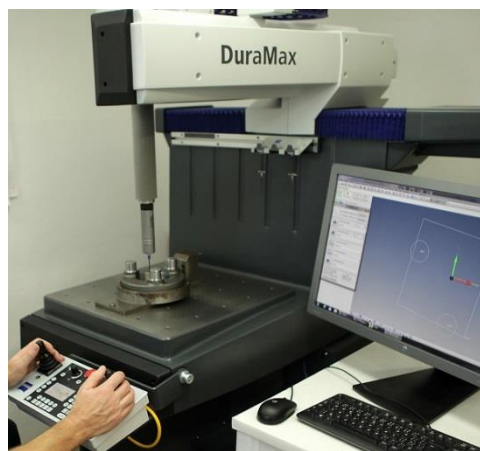


- **DIN EN ISO 9001:2008**

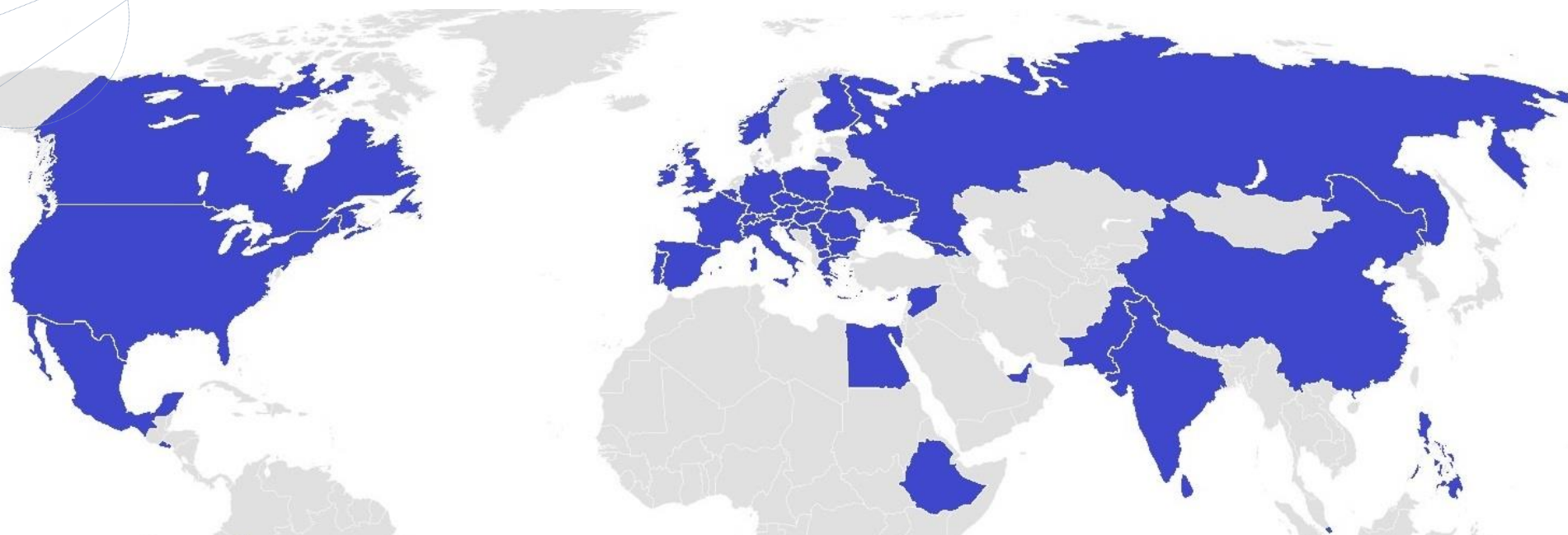
- 100% rating from material certification to output checks
- Separate measuring workstation
- **MITUTOYO** and **MAHR** surface roughness testers

- **WENZEL** and **ZEISS** 3D coordinate measuring machines

STEP CAD Convertor for transferring geometric elements and free-shaped surfaces between individual CAD systems, or measuring software



Our Customers Worldwide



Non – EU countries

Australia	Hong Kong	Mexico	Russia
Canada	Chile	Norway	SAE
Egypt	China	Pakistan	Salvador
Ethiopia	India	Peru	Serbia
Georgia	Macedonia	Philippines	Singapore

EU countries

South Africa	Greece	Poland
Sri Lanka	Hungary	Portugal
Switzerland	Ireland	Romania
Syria	Italy	Slovakia
Ukraine	Lithuania	Slovenia
USA	Netherlands	Spain

- **Targeting** at new opportunities and commercial markets
- Production programme **innovation** in the field of encoders
- **Modernisation** of machinery with a new CNC milling and turning centres
- **Development** and training of employees
- **Making use** of students and graduates
- **Implementation** of the new technologies and trends
- **Continuous improvement**
- **CSR activities**





LARM a.s.
Triumf 413
384 11 Netolice
Czech Republic

Company ID No.: 46678166
Tax ID No.: CZ46678166



info@larm.cz
+420 388 386 211
www.larm.cz

