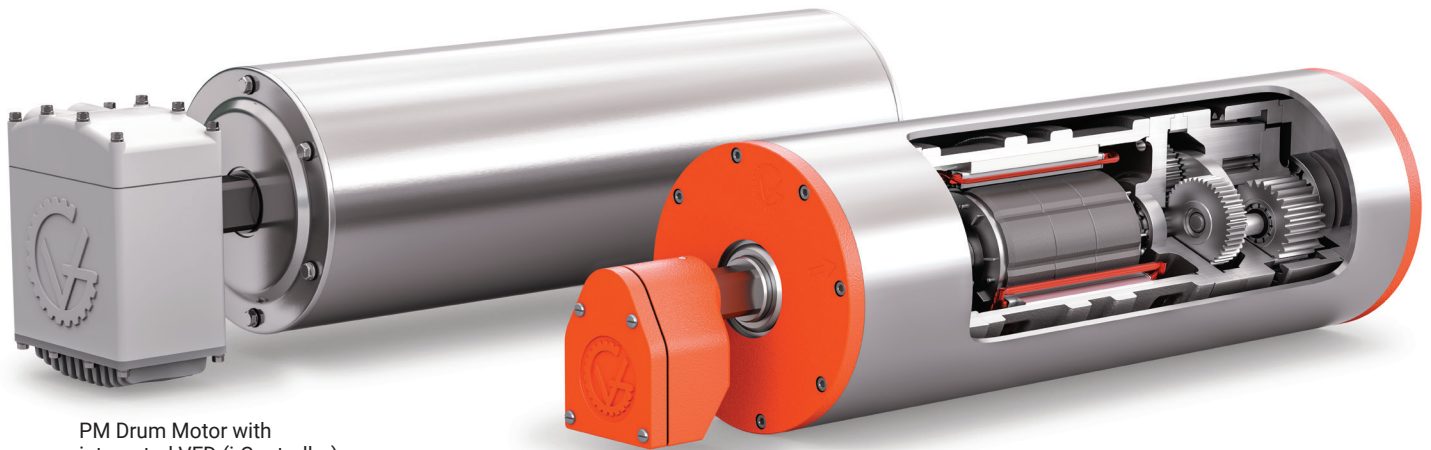


IntelliDrive™ Series Drum Motors



The VDG IntelliDrive™ is an internally powered conveyor belt drive with new permanent magnet (PM) motor technology. All components including the motor, gear reducer, and gears are enclosed inside the drum, delivering 40% increased efficiency, a wider range of belt speeds without loss of torque or belt-pull, and a significant increase in electric motor lifespan compared to a traditional external conveyor belt drive.

The rotor is self-induced by the permanent magnets, resulting in 60% higher electric motor torque compared to a traditional external drive. The IntelliDrive™ Drum Motor requires a variable frequency device (VFD) to operate, either a remotely mounted VFD or the VDG i-Controller, which integrates the VFD inside the drum motor's electrical junction box for quick and easy setup. The IntelliDrive™ enables onsite diagnostics, full motor indexing speed control, and communications with other automated plant equipment, with considerable savings from reduced energy and maintenance costs.



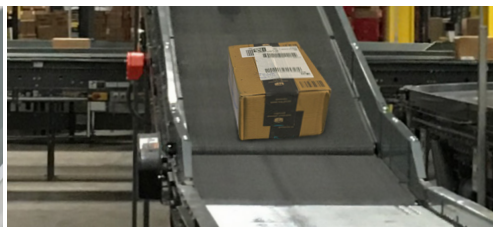
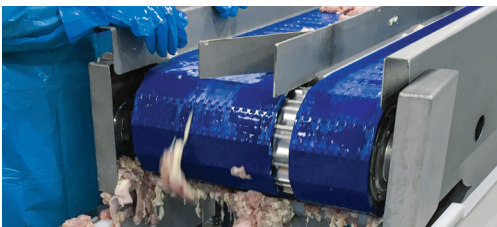
PM Drum Motor with integrated VFD (i-Controller)

PM Drum Motor



IntelliDrive™ (PM) Drum Motor Advantage:

- PERMANENT MAGNET MOTOR TECHNOLOGY
- NO EXTERNAL MOVING DRIVE COMPONENTS
- 40% INCREASED ELECTRICAL EFFICIENCY
- INCREASED ELECTRIC MOTOR LIFESPAN
- IP69K RATED ENCLOSURE



IntelliDrive™ Drum Motor Features & Options



| DIAMETER (inches) | TORQUE (ft-lbs) | BELT SPEED RANGE (ft/min) | DRUM MOTOR (TM) |
|-------------------|-----------------|---------------------------|-----------------|
| 4.5 | 55 | 23 - 140 | TM113 |
| | 27 | 83 - 500 | |
| 5.0 | 180 | 14 - 85 | TM127 |
| | 55 | 46 - 274 | |
| 6.5 | 230 | 13 - 153 | TM160 |
| | 95 | 31 - 368 | |

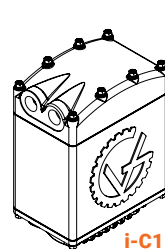
| | STANDARD | OPTION |
|------------------|--|---|
| POWER CONNECTION | Junction Box, | Cable; Straight or Elbow, VDG i-Controller |
| ELECTRIC MOTOR* | Class F (155°C) VFD rated, Inverter-duty VPI | Class H (180°C) GV Thermal Overload Protection |
| VOLTAGE | 480V 3 Phase | – |
| BACKSTOP | – | CW - Clockwise or CCW - Counter Clockwise |
| LAGGING | – | VDG patented IronGrip™ (TM160 and higher) Black Rubber, USDA/FDA Blue or White Nitrile Rubber: plain, diamond, or chevron pattern |
| DRUM PROFILE | – | V-Groove Drum Profiles for various belt manufacturers Profiled Sleeve (XP) for various belt manufacturers |

* All VDG premium-efficiency electric motors are manufactured in-house by VDG and undergo a **Vacuum Pressure Impregnation (VPI)** process, increasing the life of the electric motor.

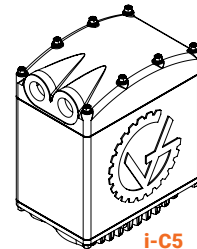
VDG i-Controller:

Variable frequency drive (VFD) integrated inside the electric motor junction box, available in two standard models.

- **ONBOARD DIAGNOSTICS**
- **PLC CAPABILITIES**
- **ETHERNET AND MODBUS READY**
- **IP69K ENCLOSURE RATING**



i-C1



i-C5