

# CubiScan® 100

## Applications/Benefits

### Warehousing and Distribution

- Designed to work with and interface to warehouse management system software
- Facilitates storage location selection, order picking, carton selection, and shipment planning
- Compatible with case packing/load optimization software packages
- Eliminates manual data entry and protects data integrity

### Freight Manifesting / Auditing Applications

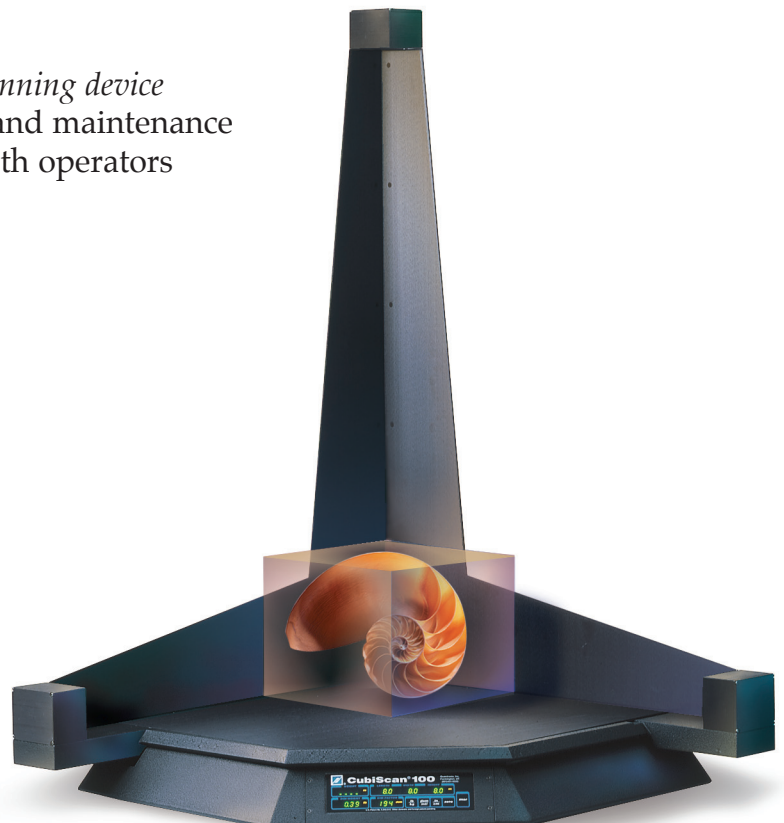
- Type-approved and certified as a legal-for-trade cubing and weighing device
- Provides dimensional-weight data for calculating shipping charges
- Designed to interface directly to computer-based manifesting systems
- Has user-definable "dim factors" for dimensional-weight calculations

### Other

- QBIT™ PC interface software included
- Real-time or batch-mode data transfer to host mainframe or PC
- Mobile system moves anywhere in your warehouse
- Dimensional and weight data available in metric and/or imperial units
- Mobile CubiScan work station options include:
  - Sturdy metal cart with hard rubber tires*
  - 12 volt deep cycle battery, charger, and power inverter*  
*(with more than 12 hour battery life)*
  - Computer shuttle arm*  
*(supports PC monitor and keyboard)*
  - Bar code scanning interface*  
*(with inclusion of handheld bar code scanning device)*
- Modular design allows for easy user set up and maintenance
- Uses sensing technology which is safe for both operators and package contents



FIRST CLASS





# CubiScan 100

## Specifications

Physical Specifications	
Length	32 in (813 mm)
Width	32 in (813 mm)
Height	48 in (1,220 mm)
Weight	70 lbs (32 kg)
Performance Specifications	
Measurement Range	
Length	0.5 in (13 mm) to 24 in (610 mm)
Width	0.5 in (13 mm) to 24 in (610 mm)
Height	0.5 in (13 mm) to 36 in (914 mm)
Measurement Increment	0.1 in (2 mm) / 0.2 in (5 mm)*
Weight Capacity	100 lbs (50 kg)
Weight Increment	0.05 lbs (0.02 kg)
Other	
Measuring Sensor	Ultrasonic
Weight Sensor	Load cell
Data Output	EIA RS-232-C, bi-directional
User Interface	Integrated display & keypad / QBIT™ software
Minimum PC Specifications	Windows 7/XP/95/98/NT/2000, Pentium II processor, 20 Megabytes of Disk Space, Screen Resolution Setting of 800 X 600
Power Requirements	95 - 250 VAC, 47 - 63 Hz
Operating Temperature	40° - 104° F (5° - 40° C)
Humidity	0 - 90% non-condensing

\*Applies to CubiScan 100-LFT (legal-for-trade version)



Weights & Measures Compliance:  
NTEP Certificate of Compliance to NIST Handbook 44  
Industry Canada Weights & Measures  
NMI (Australia)

Safety Compliance:  
UL 1950 (USA), CSA 950 (Canada), IEC 950 (International) for ITE

EMI Compliance:  
FCC, Industry Canada and CISPR 22 Class A

CubiScan® and the Quantronix logo are registered trademarks of Quantronix, Inc. Scanning New Dimensions™, Qbit™, QbitWIN™, and The FreightWeigh System™ are trademarks of Quantronix, Inc. Windows® is a registered trademark of Microsoft Corporation.

CubiScan software and firmware are protected by international and domestic copyrights.

CubiScan 100 measurement products incorporate technology protected by U.S. Patent No. 5,422,861 and foreign patents.

CubiScan 150 measurement products are protected by one or more of U.S. Patents Re42,430 and D490,328 and foreign patents. Another foreign patent is pending.

CubiScan 110 measurement products are protected by one or more of U.S. Patent Re42,430 and foreign patents. Another foreign patent is pending.

CubiScan 1000-VS measurement products incorporate technology protected by U.S. Patent No. 7,277,187 and foreign patents.

This document Copyright© 2011 by Quantronix, Inc. All rights reserved.

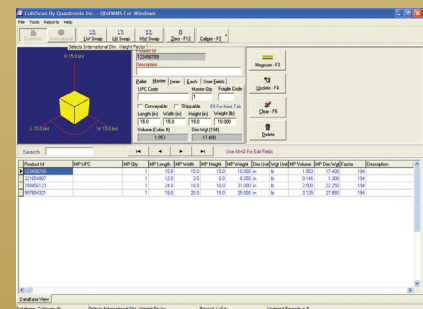
**CubiScan 100.** Optimize the use of your space. Introducing the perfect tool of efficiency and source of revenue.

**Distribution.** The CubiScan 100, an integrated cubing and weighing system, gives you total control in any distribution center or warehouse application. Imagine the benefits of collecting your package information (weight and size) quickly and consistently—there's no need for second guessing, no room for human error, no reason to re-enter data, and no data corruption. And, the information is easily transferred to your data processing system where it can be used immediately.

**Manifesting.** Tested and certified as a type-approved, legal-for-trade cubing and weighing device, the Cubiscan 100 (LFT version) is a valuable tool in freight manifesting. Quicker and more reliable than manual measurements, the CubiScan 100 helps shippers get it right the first time by applying the correct dimensional-based shipping charges and eliminating those costly Charge-Backs. For carriers, you can easily and reliably audit the freight you receive from customers.

An integrated digital display and control panel allow finger-tip control. Innovative software gives you numerical dimensions and weight and an instantaneous, three-dimensional graphical representation of the parcel being measured.

So check into the Cubiscan 100. You'll discover what hundreds of users already know. Time is money. And so is real estate. Make the best use of both.



Data files are created, managed, and made available for transfer to a host data processing system.



380 South 200 West • P.O. Box 929 • Farmington, Utah • 84025 • USA  
1-800-488-CUBE • (801) 451-7000 • Fax: (801) 451-0502  
e-mail: info@cubiscan.com • www.cubiscan.com