

ERLANG TEC
Reed Sensor Solution

the best solution partner in reed sensor



ERLANG TEC
Reed Sensor Solution

臺灣鈺倫科技股份有限公司
Taiwan Erlang Technology Co.,Ltd.

東莞市鈺倫實業有限公司
Dongguan Erlang Technology Co.,Ltd.

地址：廣東省東莞市長安鎮沙頭東大一街12號

電話：0769-85840178 / 85840278

傳真：0769-85840378

Http://www.erlangtec.com

www.erlangtec.com

關於鈹倫

ABOUT US

總公司臺灣鈹倫成立於1998年，2005年在中國大陸設立生產基地——東莞市鈹倫實業有限公司。是集研發、生產、銷售、貿易於一體的高新技術企業，長期專注於磁簧開關、水位開關、油位開關、流量傳感器、浮球等各式傳感器的研發及生產。目前設有慈溪辦事處，順德辦事處，旨在形成更加完善的服務體系。

我司長期秉承世界先進的生產技術，在經驗中不斷的進步，追求完美的品質與性能，以滿足市場及客戶不斷增長的需求，長期堅持以優良的品質、良好的信譽、周到的服務取勝，享有眾多國內外知名企業的贊譽。

鈹倫在不斷的發展壯大，我們堅持以“市場創新產品，以產品凝聚實力，以實力帶動銷售，以銷售打造未來”的營銷方針，並以誠信為立業之本，以技術領先為基礎，以為客戶創造效益為目的，全心全意滿足客戶的需求，創造一流企業的經營理念，逐步成為行業的領跑者。

真誠的希望能成為您最好的伙伴！

主營產品：

進口干簧管、各類浮球、水位開關、接近開關、水流開關、流量傳感器、TDS、電子燒烤叉、PM2.5檢測儀、濁度傳感器、農藥殘留分析儀。



Taiwan Erlang Corporation founded in 1998, established the manufacturing base in China in 2005—Dongguan Erlang Technology Co.,Ltd. It is an excellent high-tech enterprise with R&D, manufacture, sales and trading. We focus on the R&D and manufacturing magnetic reed switches, water level sensors, oil level sensor, flow sensor, float balls and other sensors. In order to serve our customers better, our company established the office in Cixi and Shunde to form a further improved service system.

Our company upholds world advanced technology and continuous progress, and we pursue perfect quality and performance to meet the keep growing demands of the market and customers. We continue to win by high quality, good reputation and considerate service so we have high reputation in domestic and foreign markets.

Our company continuous to grow, we always adheres to the marketing policy of "market innovate products, products concentrate strength, strength arouses sales, sales create the future" and the operation concepts of "honest for the foundation, advanced technology for the base, customer first" to create top-ranking mature enterprise.

Sincerely hope to be the best partner with you!

Erlang's Main Products:

Import Reed Switch, various float balls, level sensor, proximity switch, flow switch, flow sensor, TDS, digital BBQ fork, PM2.5 detector, Pesticide residue analyzer.

企業文化

OUR CULTURE

企業精神：誠信 責任 團結 進取

企業願景：打造傳感器領導品牌

服務理念：客戶的滿意是檢驗我們工作的唯一標準

管理理念：人盡其才 物盡其用 事無巨細 傾心為之

用人理念：德才兼備 品德優先

競爭理念：自主研發 掌握核心 以質取勝

品質理念：專業就是希望 品質保證一切

Enterprise Spirit: Integrity, Responsibility, Unity, Progress.

Enterprise Vision: To build a leading brand of sensors.

Service Concept: Customer satisfaction is the only benchmark to inspect our works.

Management Ideas: Make full use of talents and everything. No problem too large, no business too small and go for it.

Employment Principle: choose our employees with talent and morality.

Competition Concept: Independent R&D, Master the core technology, competing on quality.

Quality Ideas: Professional is hope, quality assure all.



歷史沿革

HISTORY

1998
臺灣公司成立
The establishment of
Erlang Technology Co.,
LTD in Taiwan.

2000
獲得SRC干簧管
亞洲區總代理
Get the SRC dry reed
pipe a general agent
in Asia

2005
成立東莞生產基地
Establishment of the
manufacturing base in
Dongguan.

2008
獲得了ISO9001質量體系
認證
2007-Obtain ISO "9001:2008"
system certification and other
product certification
testing.

2008
成立順德北滘辦事處
establishment of
ShunDe office.

2009
獲得美的質量貢獻獎
won quality award
of Midea.

2010
榮獲東莞市
民營科技企業稱號
won title of private-own
technical enterprise
company.

2010
榮獲美的金牌供貨商稱號
won title of gold supplier
of Midea.

2011
成立海外銷售部
Establishment of
oversea sales
department.

2012
成立慈溪辦事處
establishment of
CiXi office.

2013
取得進出口權
obtain the right of
import and export.

2013
榮獲廣東省
高新科技企業
won title of Guangdong
high-tech enterprise.

2014
水流量傳感器榮獲
廣東省高新技術產品
2014 Flow meter won the
guangdong province
high-tech products

2014
先鋒電器最佳質量獎
2014 Singfun company
best quality award

2015
TDS系列獲得多項專利
2015 TDS series obtain
many kinds of
patents

2015
東莞工廠資本額增至
500萬元
2015 The Capital of
Dongguan factory
increased to 5 million

2016
TS16949推進中
2016 TS16949 in
advancing

塑料液位開關系列

PLASTIC LEVEL SENSOR SERIES

塑料液位開關系列

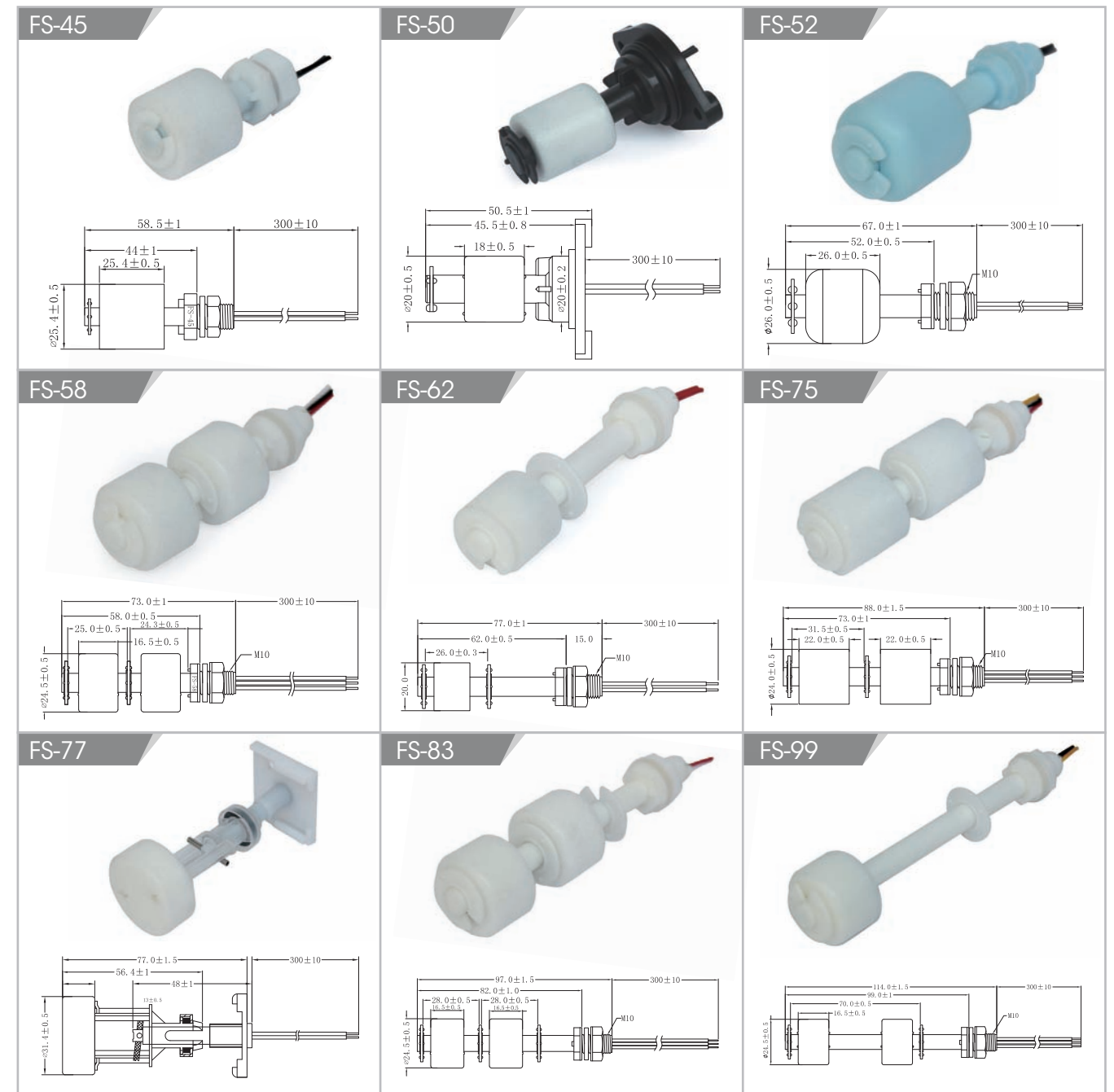
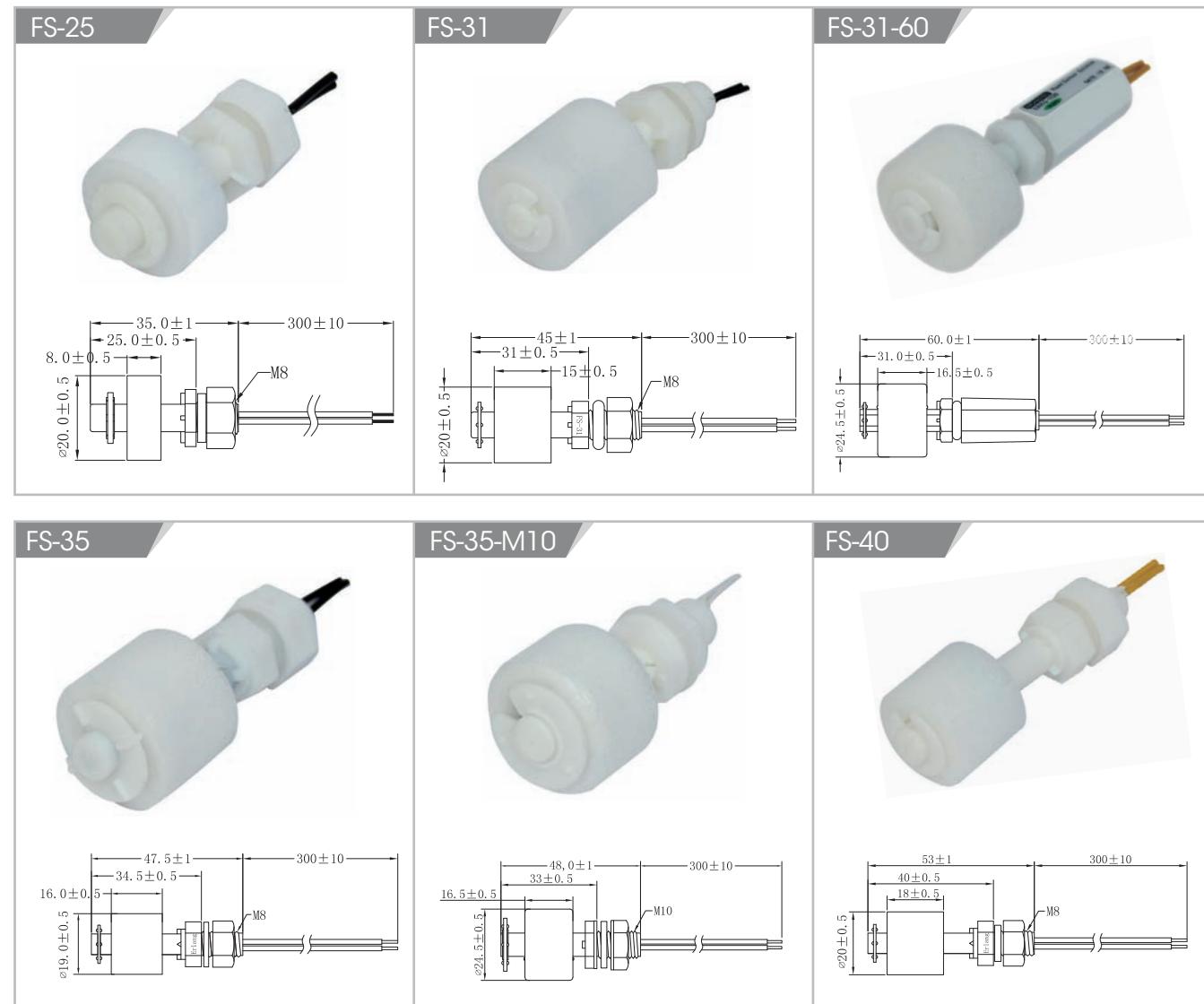
PLASTIC LEVEL SENSOR SERIES

液位傳感器系列產品:液位傳感器主要由磁簧開關和浮球組成,浮球內有磁性材料,浮球隨被測液位上下移動時,觸動磁簧開關而測出液體位置。液位傳感器採用進口開關組件,具有體積輕巧、工作原理簡單、可靠性高、成本低的特點,有不同的材質及規格的浮球可供選擇,電氣參數可以根據客戶要求改變,特殊規格亦可定制。產品可用於飲水機、熱水器、太陽能、空調、加濕器、衛浴設備、醫療器械、冷風機、油箱等的液位控制中。在汽車,工業設備,農用設備、家用電器中應用前景廣泛。

鉅倫長期為國際知名企業設計生產各種液位開關,對製造液位傳感器的一些特殊材料具有非常豐富的經驗。

Water level switch is mainly used in equipment which request water level is regularly kept unchangeably. As a water level automatic control, it works when connected with implementation devices such as water pump or solenoid valve. Water level switch can be widely used in automobile, industry equipment, agriculture equipment and household electrical appliances such as air conditioner, water dispenser, humidifier, dehumidifier, etc.

Function Characteristics: when liquid level rises (or falls), switch will turn on/turn off. (Alternative)



本體材質	Float Body Material	PP / POM
浮球材質	Float Ball Material	PP
最大功率	Max Contact Rating	10W / 50W
最大開關電壓	Max Switching Voltage	100VDC / 220VDC
最大開關電流	Max Switching Current	0.5A / 1.5A
最大崩潰電壓	Max Breakdown Voltage	200VDC / 300VDC
最大負載電流	Max Carry Current	1.0A / 3.0A
最大接觸電阻 (不含線材)	Max Contact Resistance(Excluding wire)	100 mΩ
工作溫度	Operating Temperature	-20~85° C

不銹鋼液位開關系列

STAINLESS STEEL LEVEL SENSOR SERIES

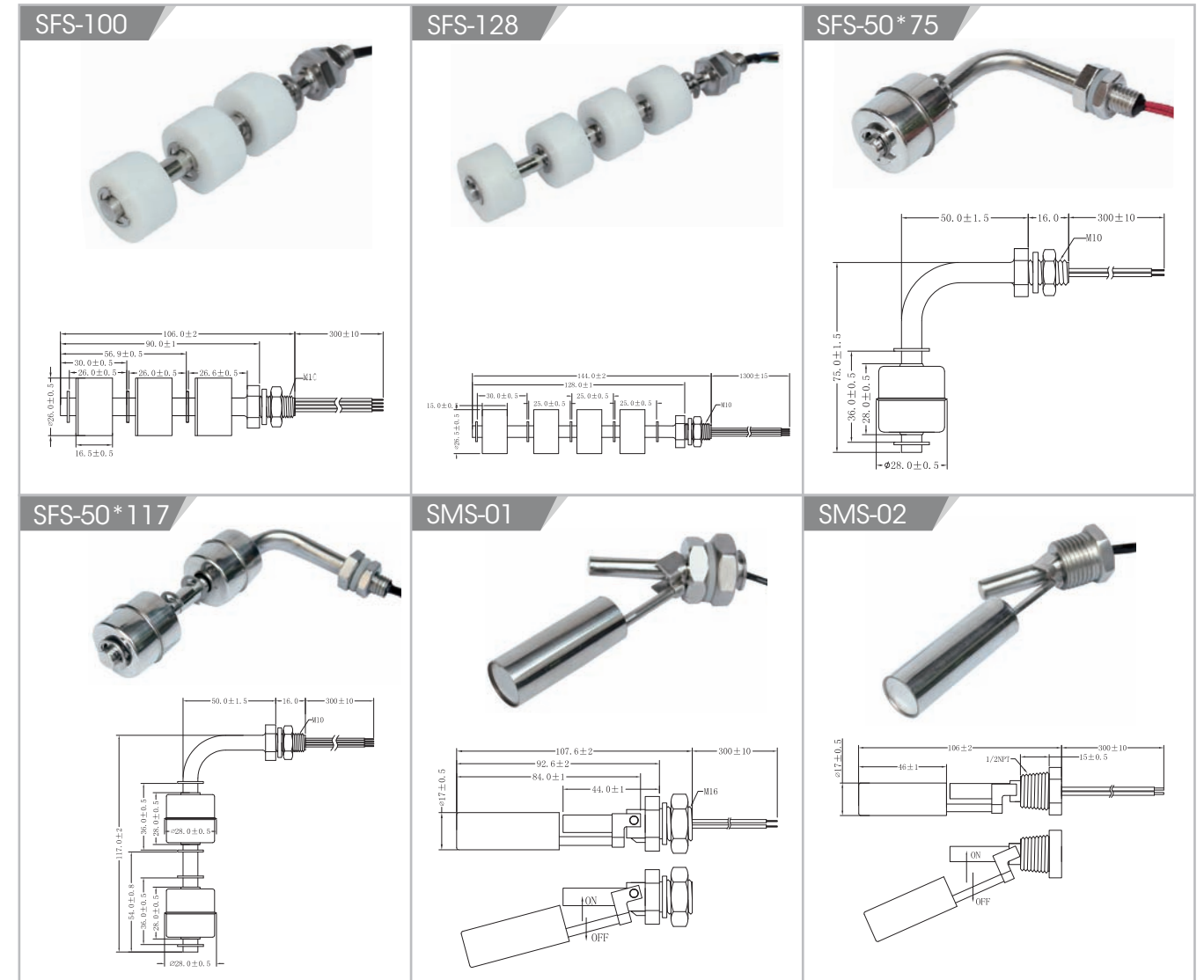
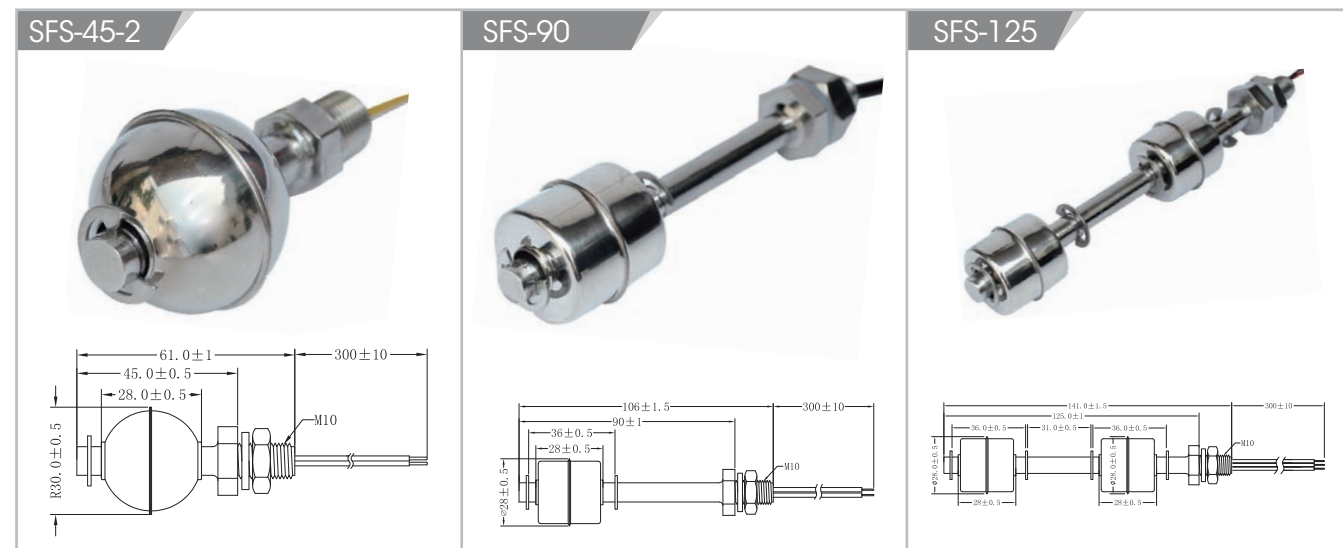
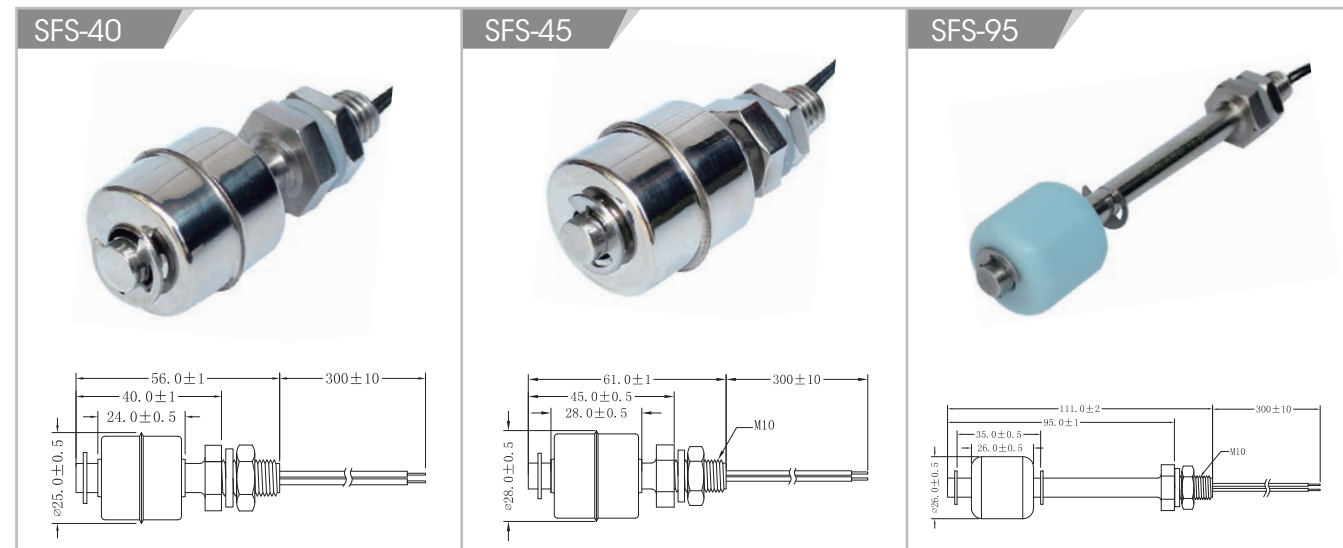
不銹鋼液位開關系列

STAINLESS STEEL LEVEL SENSOR SERIES

不銹鋼液位開關產品：主要是由不銹鋼外殼、磁簧開關和不銹鋼浮球組成，不銹鋼外殼、浮球材質有SUS304和SUS316等，磁簧開關選用進口元件。產品多用於飲水機、熱水器、模溫機等產品的液位控制中，並可用於高溫液體環境，長度可以任意定制。

Stainless steel level switch products: mainly made of stainless steel shell, Magnetic reed switch and float composed of stainless steel, float made of stainless steel SUS304 and SUS316, reed switch selection of imported parts, products used for level control drinking fountains, water heaters, mold temperature, etc. of the product, it can be used for high-temperature liquid environment,

and length can be customized.



產品特性與規格

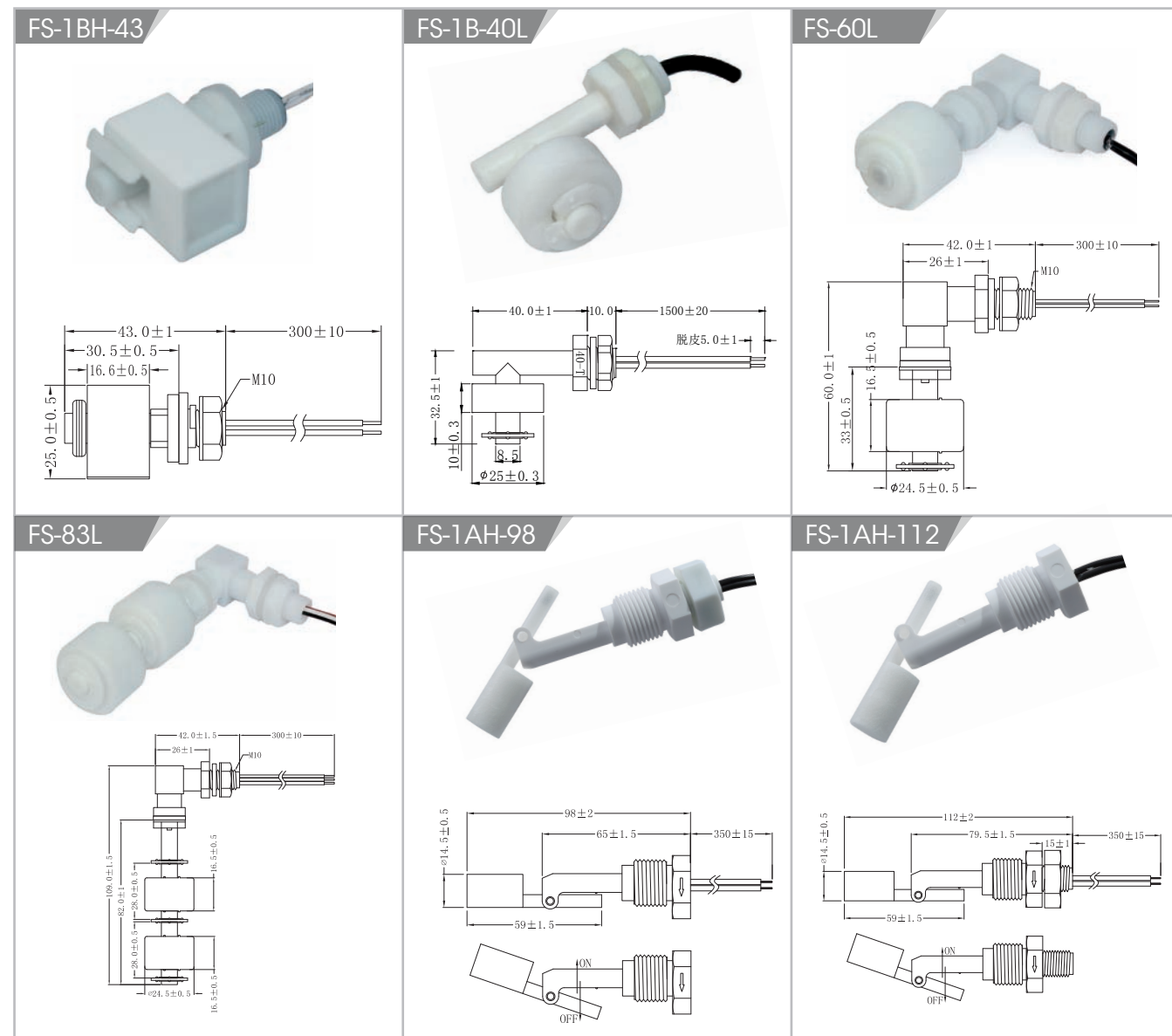
本體材質	Float Body Material	SUS
浮球材質	Float Ball Material	SUS / PP / NBR / POM
最大功率	Max Contact Rating	10W / 50W
最大開關電壓	Max Switching Voltage	100VDC / 220VDC
最大開關電流	Max Switching Current	0.5A / 1.5A
最大崩潰電壓	Max Breakdown Voltage	200VDC / 300VDC
最大負載電流	Max Carry Current	1.0A / 3.0A
最大接觸電阻 (不含線材)	Max Contact Resistance(Excluding wire)	100 mΩ
工作溫度	Operating Temperature	-30~125° C

側裝液位開關系列

SIDE MOUNTED LEVEL SENSOR SERIES

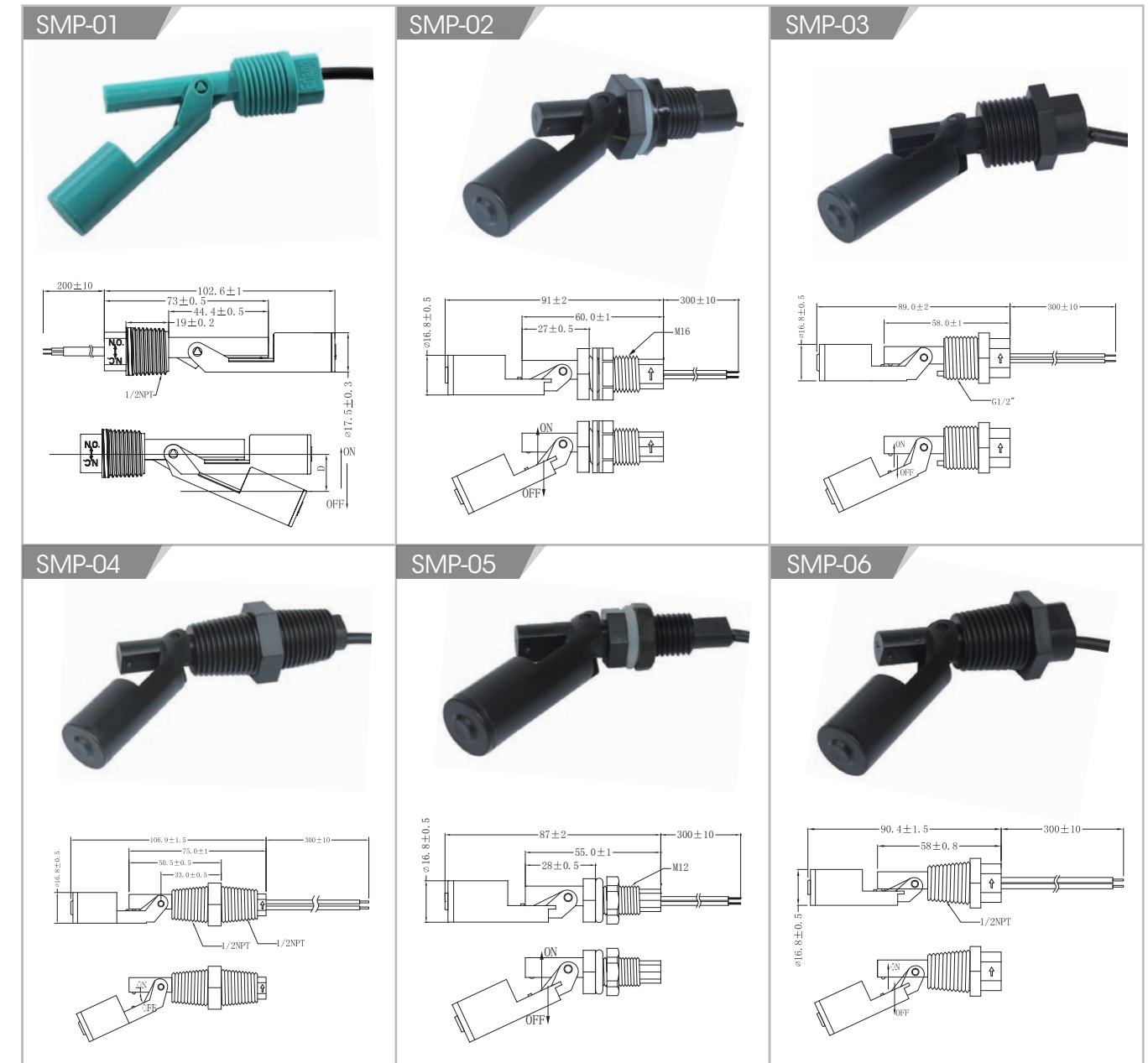
側裝液位開關產品：側裝液位開關由磁簧開關與浮球組成，產品靈活安裝在側壁，高度可以隨液位要求任意調整，開關選用原裝進口原件，體積輕巧，工作原理簡單，可靠性高，有不同材質及規格可供選擇，電氣參數可根據客戶要求改變，特殊規格亦可定制。

Side level switch products: side-mounted level switch by the reed switch on the composition of the float, flexible products installed in the side wall, with the level height can be adjusted at will, switch selection of imported, lightweight, working principle is simple, high reliability, there are different materials and specifications to choose from, electrical parameters can be changed according to customer requirements, special specifications can also be customized.



側裝液位開關系列

SIDE LEVEL SENSOR SERIES



產品特性與規格

本體材質 Float Body Material	SUS / PP
浮球材質 Float Ball Material	SUS / PP
最大功率 Max contact rating	10W / 50W
最大開關電壓 Max Switching Voltage	100VDC / 220VDC
最大開關電流 Max Switching Current	0.5A / 1.5A
最大崩潰電壓 Max Breakdown Voltage	200VDC / 300VDC
最大負載電流 Max Carry Current	1.0A / 3.0A

接近開關系列

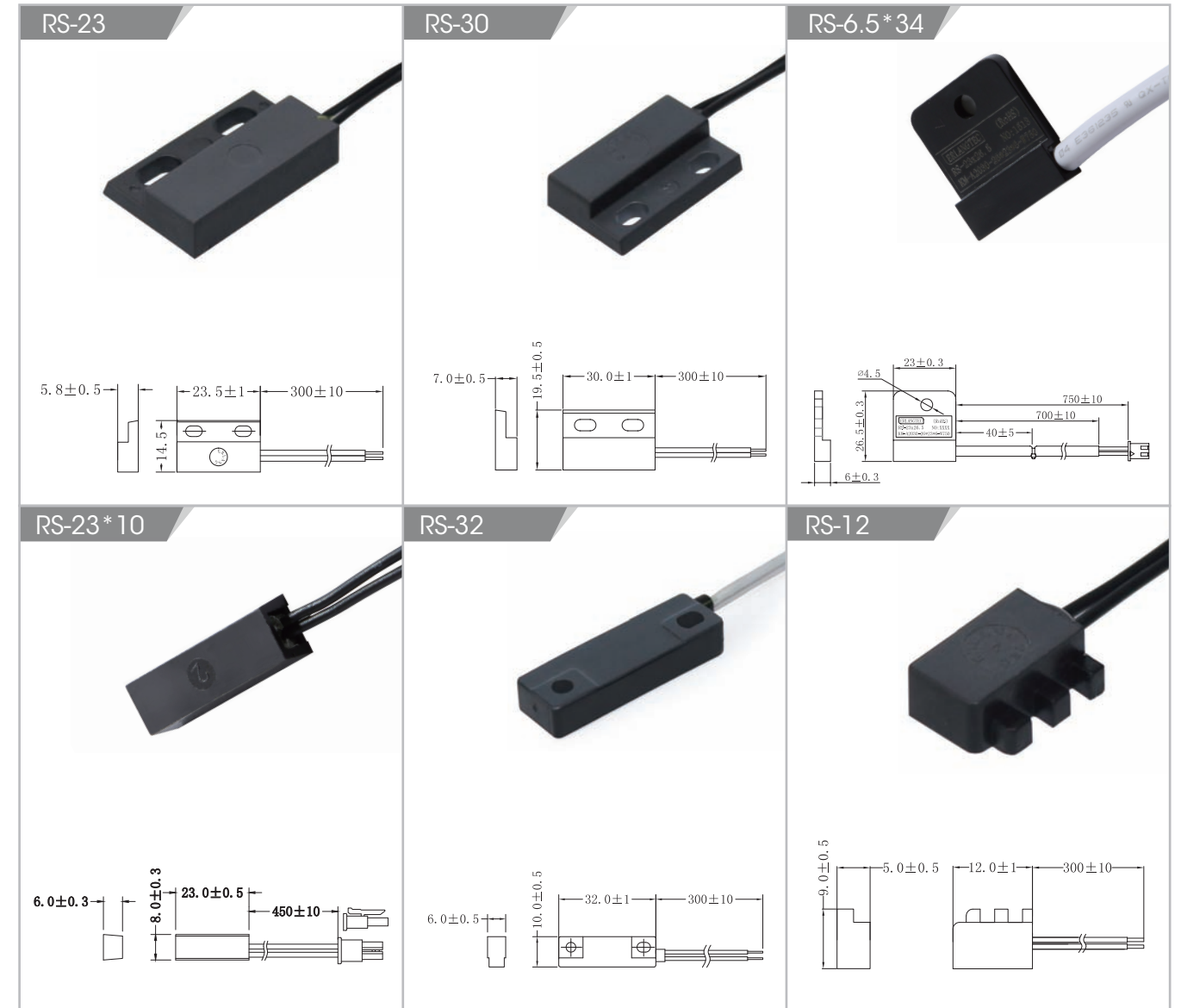
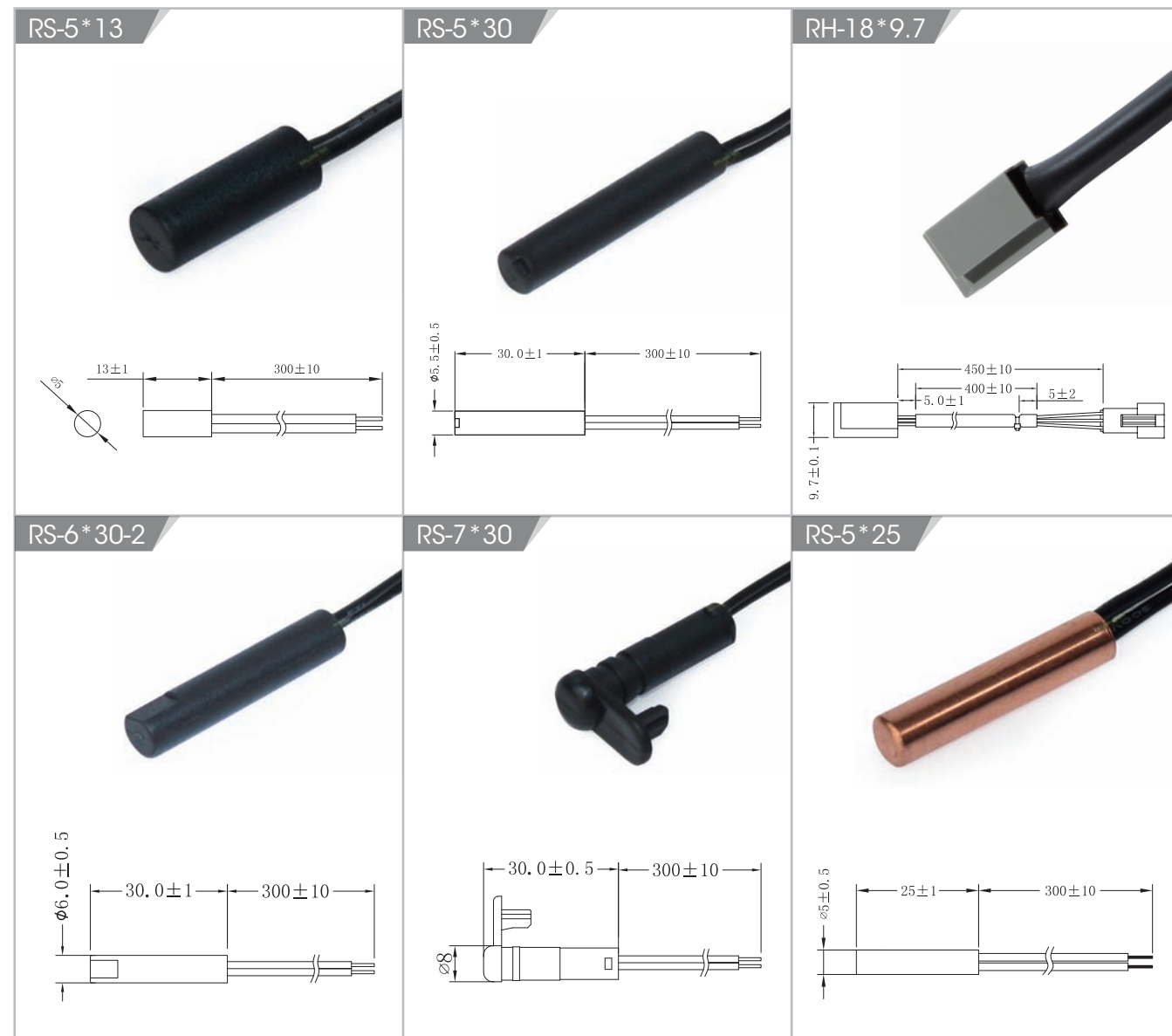
PROXIMITY SENSOR SERIES

接近開關系列

PROXIMITY SENSOR SERIES

接近開關由磁簧開關經綫連接定型封裝而成，當磁性體接近時，引起開關動作，一般作為位置傳感器使用。接近開關廣泛用于測量儀表、辦公室自動化設備、家庭用品、安防設備以及運輸設備等。

Proximity sensor is constructed by shaping and sealing the magnetic spring tube connected with wires. Switching action will occur when a magnetic object is in the proximity. It is usually used as a position sensor. Proximity sensor is widely used in measuring instruments, office automated equipment, household supplies, security and safety equipment, and transportation equipment.



產品特性與規格

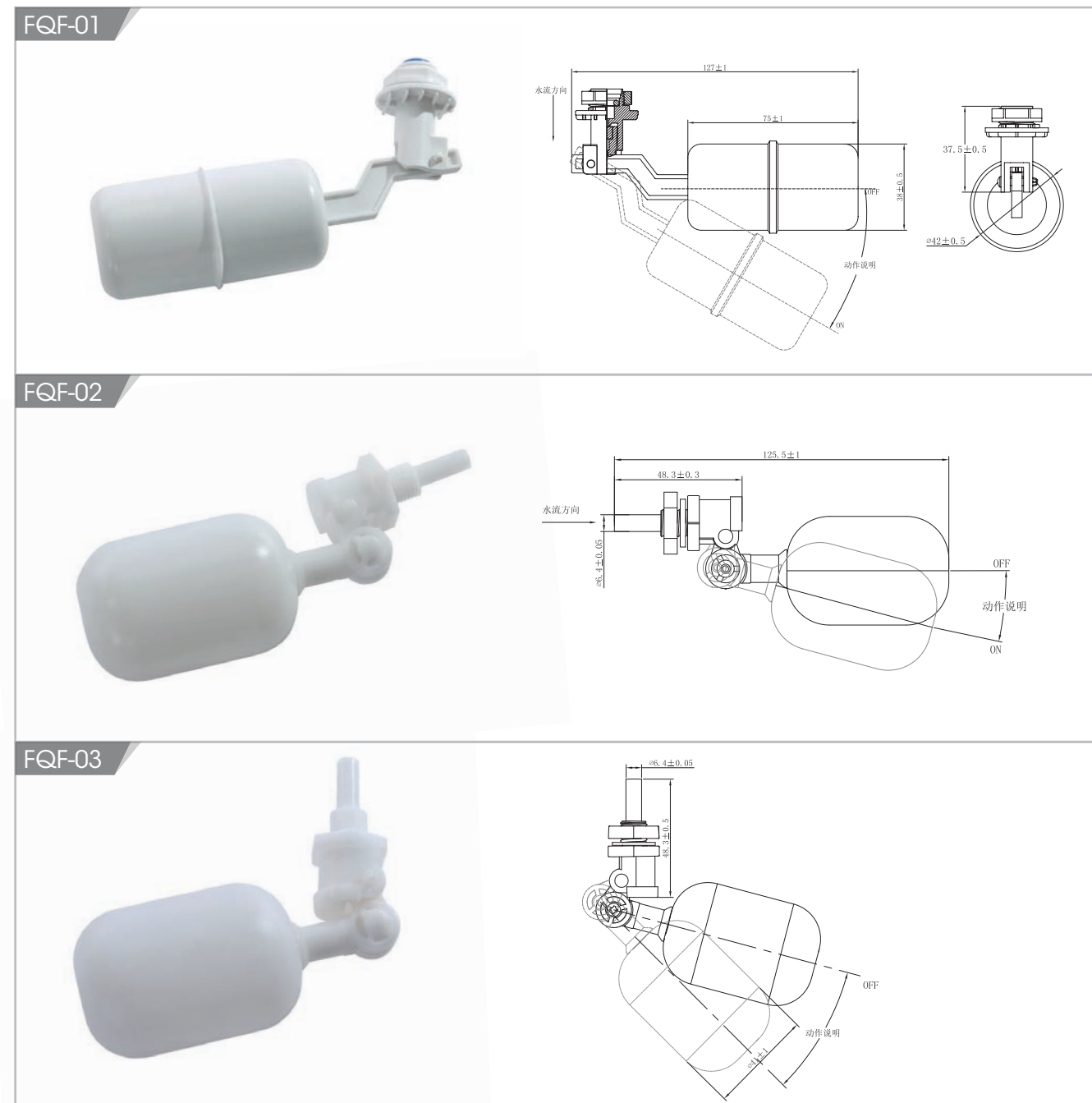
本體材質 Float Body Material	ABS / PP / CU
最大功率 Max contact rating	10W / 50W
最大開關電壓 Max Switching Voltage	100VDC / 220VDC
最大開關電流 Max Switching Current	0.5A / 1.5A
最大崩潰電壓 Max Breakdown Voltage	200VDC / 300VDC
最大負載電流 Max Carry Current	1.0A / 3.0A
最大接觸電阻 (不含線材) Max Contact Resistance(Excluding wire)	100 mΩ
工作溫度 Operating Temperature	-20~85° C

<p>3028</p>	<p>1808</p>	<p>3015</p>
<p>2424</p>	<p>2510</p>	<p>3017</p>
<p>2828</p>	<p>1916</p>	<p>2110</p>
<p>4128</p>	<p>1722</p>	<p>2118</p>

<p>2411</p>	<p>3008</p>	<p>3011</p>
<p>2516</p>	<p>2421</p>	<p>3218</p>
<p>2224</p>	<p>2617</p>	<p>2626</p>
<p>1823</p>	<p>2215</p>	<p>2515</p>

由本體和浮球等部件組成的閥門，可用來自動控制水箱或水池的液面。具有保養簡單，靈活耐用，液位控制準確度高，水位不受水壓干擾且開閉緊密不漏水等特點。

The float valve by the stem and other components, can be used to automatically control tower or pool level. With maintenance of simple, flexible and durable, accurate level control, water free from pressure and interference closing tightly watertight characteristics.



型號 Model	FLEX-14	ORD324	ORD229	MRPR-3	BSW-10SL
圖片 Picture					
接觸方式 Contact mode	A	A	A	A	A
最大功率 Maximum power	10W	10W	50W	50W	10W
最大開關電壓 Maximum switching voltage	DC 200V	DC 200V	DC 300V	DC 300V	DC 200V
最小崩潰電壓 Minimum breakdown voltage	DC 250V	DC 250V	DC 350V	DC 350V	DC 250V
最大開關電流 Maximum switching current	0.5A	0.5A	1.5A	1.5A	0.5A
最大負載電流 Maximum overload current	1A	1A	2.5A	3A	1A
最大接觸電阻 Maximum contact resistance	100mΩ	100mΩ	100mΩ	90mΩ	120mΩ
最小絕緣電阻 Minimum insulation resistance	10 ⁹ Ω	10 ¹⁰ Ω	10 ⁹ Ω	10 ⁹ Ω	10 ⁹ Ω
動作時間 Operating time	0.55ms	0.6ms	0.6ms	0.35ms	0.5ms
釋放時間 Release time	0.2ms	0.05ms	0.05ms	0.15ms	0.1ms
最大工作頻率 Maximum operating frequency	5200Hz	2500Hz	2500Hz	3200Hz	8500Hz
靈敏值 Sensitivity value	10-30AT	10-45AT	20-60AT	24-51AT	10-25AT

干簧管 (Reed Switch) 也稱舌簧管或磁簧開關，是一種磁敏的特殊開關，是干簧繼電器和接近開關的主要部件。 Reed Switch is a special kind of magnetic switch, and is the main component reed relays and proximity switches.

水質檢測探針

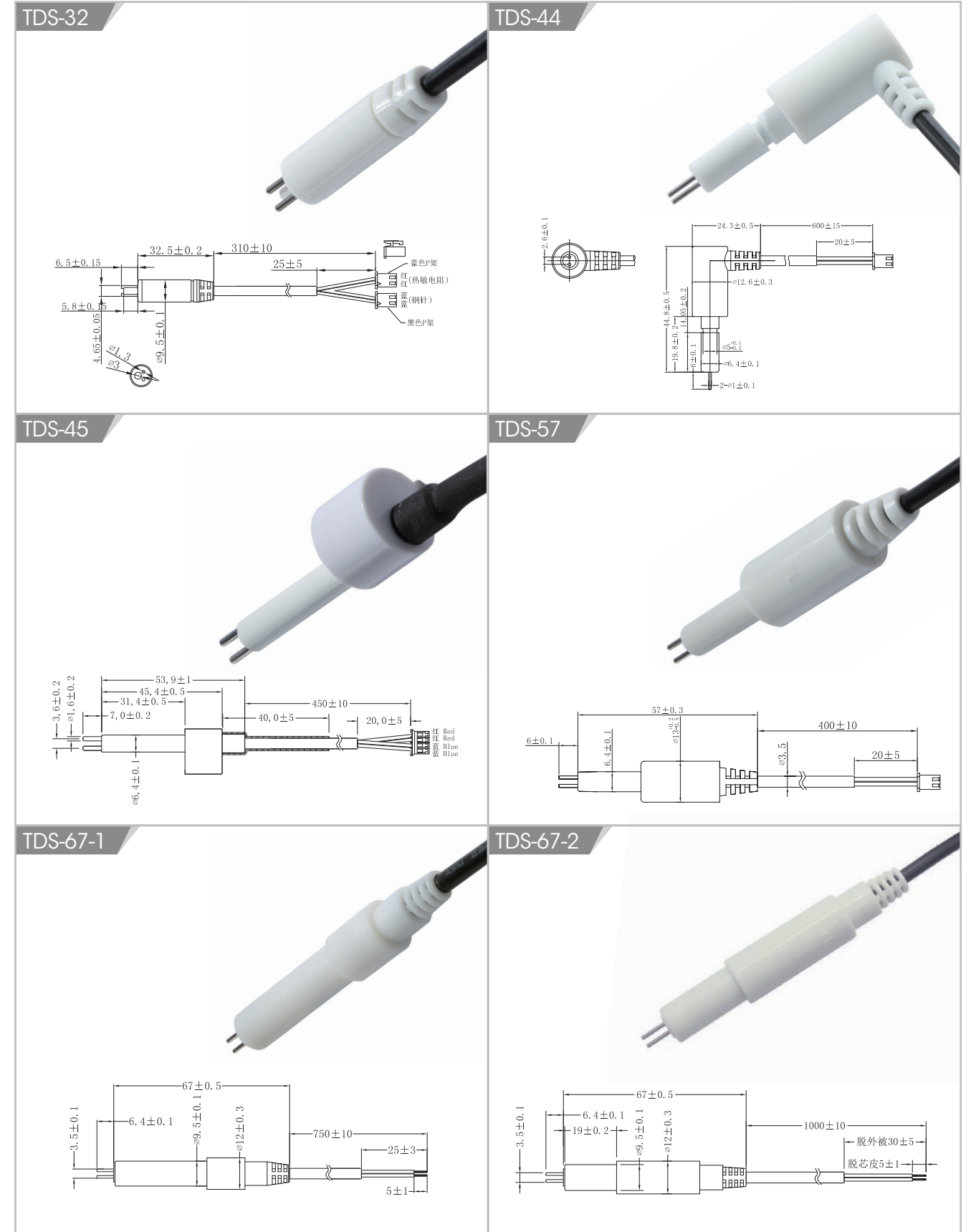
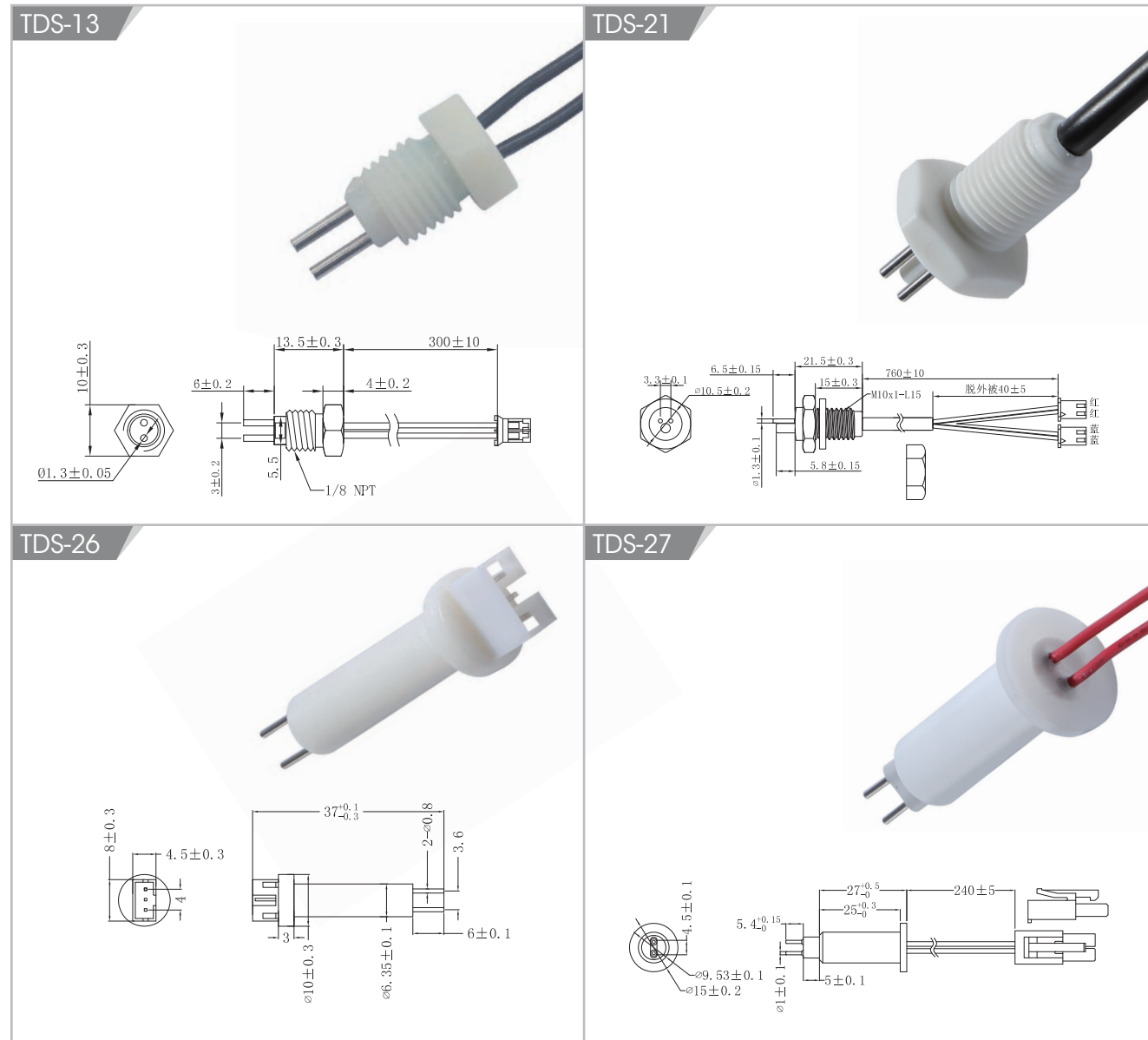
TDS

水質檢測探針

TDS

TDS開關是通過測量水的電導率從而間接反映出TDS值。TDS值代表了水中溶解物質含量,TDS值越大,說明水中的物質含量大,反之,物質含量小。適用於純水機的水質探針,與相應電路配合可以檢測純水的電導率(TDS值),安裝快捷,不漏水,壽命長。

TDS data stands for the water dissolved impurity content. The higher of TDS data indicates the more impurities, otherwise, the less impurities. TDS sensor applies to water purifier. It detects the TDS data of the pure water. Easy to install, no leak and durable.



水流量傳感器是利用霍爾元件（干簧管）的霍爾效應來測量磁性物理量的傳感器。水流量傳感器主要由閥體，水流轉子組件，穩流組件和霍爾傳感器（干簧管）組成，裝在飲水機，咖啡機，熱水器等進水端，用于檢測進水流量的大小及通斷。

A flow sensor makes use of Hall Effect (reed switch) to measure physical quantities of magnetic sensors. It consist of valve body, the flow rotor, steady flow element and hall sensor (reed switch). The flow sensor is installed at the inlet side of water dispenser, coffee machine, water heater and so on. It is a device for detecting inlet flow and on-off.

FM01

FM02

FM03

FM03U

FM04

FM05

FM06

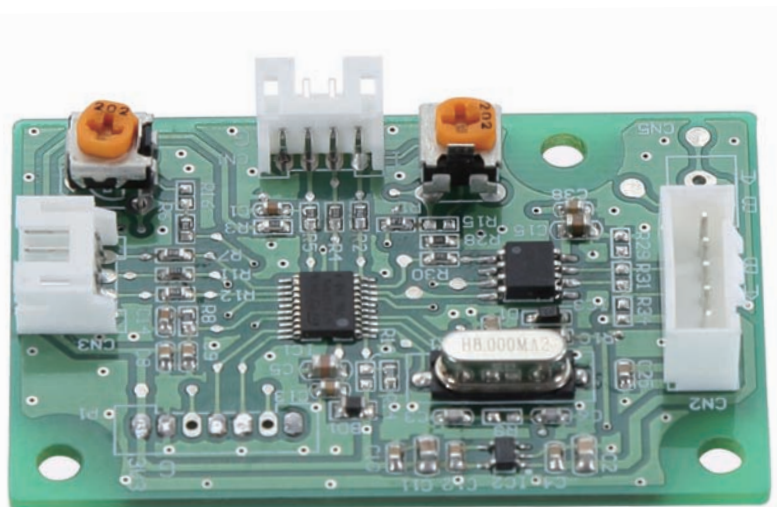
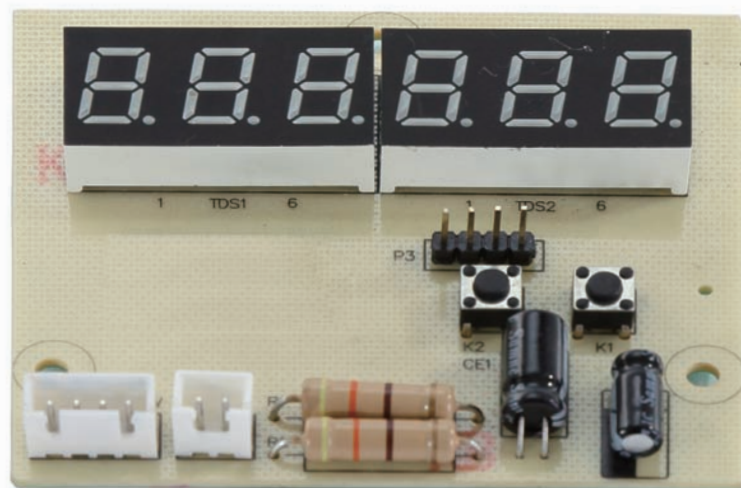
TDS顯示模塊

TDS AND MONITOR

本產品具有雙路TDS測量功能，精度高，具備抗干擾能力，成本低，數字化傳輸，提高了數據的準確性和穩定性，原水測量範圍0-1000ppm，純水測量範圍0-100ppm。

產品可應用於淨水器產品，水質監測產品，雲處理產品，水質監測產品，小型監測系統等。

This product has a dual TDS measurements, High precision, with anti-jamming capability, low cost, digital transmission, improve the accuracy and stability of the data, raw water measuring range 0-1000ppm, water measurement range 0-100ppm. products can be applied to water purification products, water quality monitoring products, cloud processing products, small monitoring system;



電容式液位控制

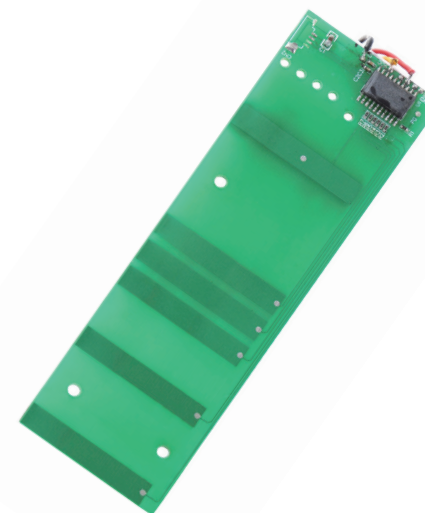
CAPACITIVE LEVEL CONTROL

電容式感應液位傳感器是本公司最新研發的液位傳感器系列之一，廣泛應用於各種需要液位元件檢測的電器設備中。其獨有的無接觸式感應方法，徹底解決了食用級產品使用傳統技術所帶來的液位不準確、壽命短、二次污染、難清洗、難安裝的問題。

Capacitive sensing liquid level sensor is one of the level sensing element series of the latest research and development, widely used in a variety of cell detection level required electrical equipment. Its unique non-contact sensing method, completely solve the edible product using conventional techniques brought inaccurate level, short life, secondary pollution, difficult to wash, difficult installation problems.



PCB板與外殼展示

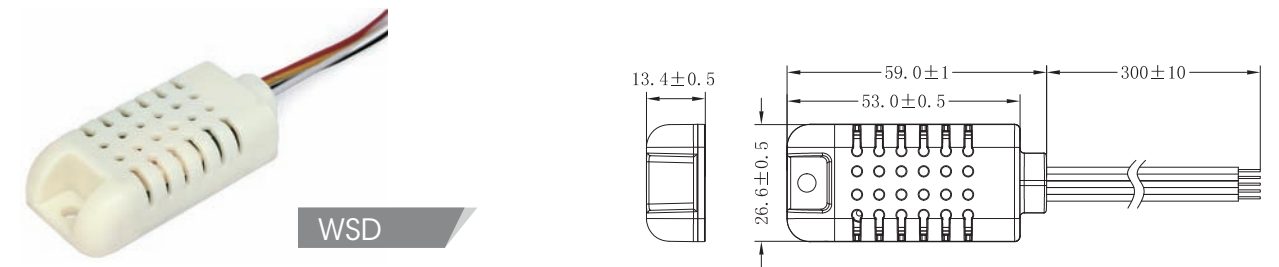
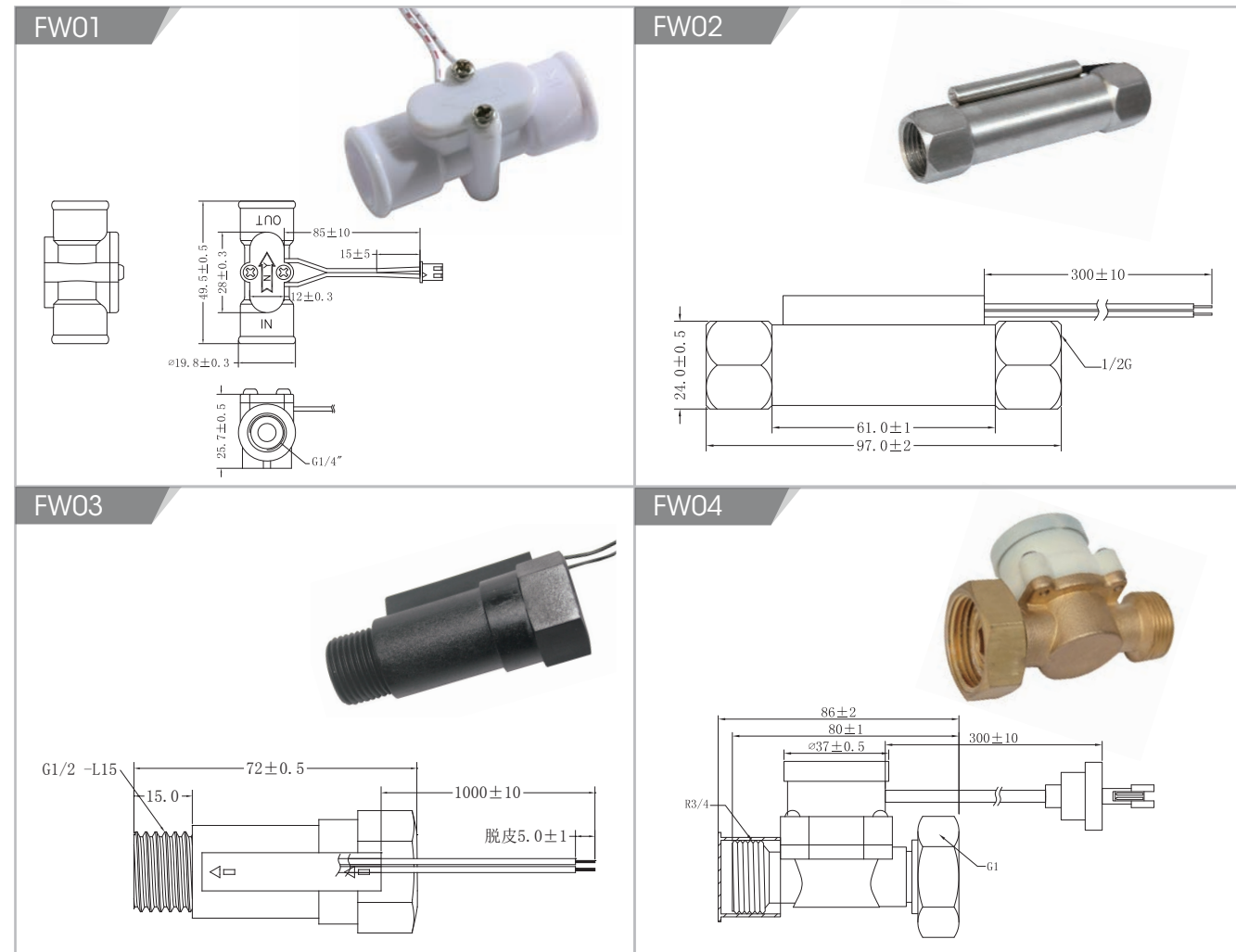


流量開關

FLOW SEITCH

溫濕度 / 混濁度傳感器

TEMPERATURE AND HUMIDITY / TURBIDITY SENSOR

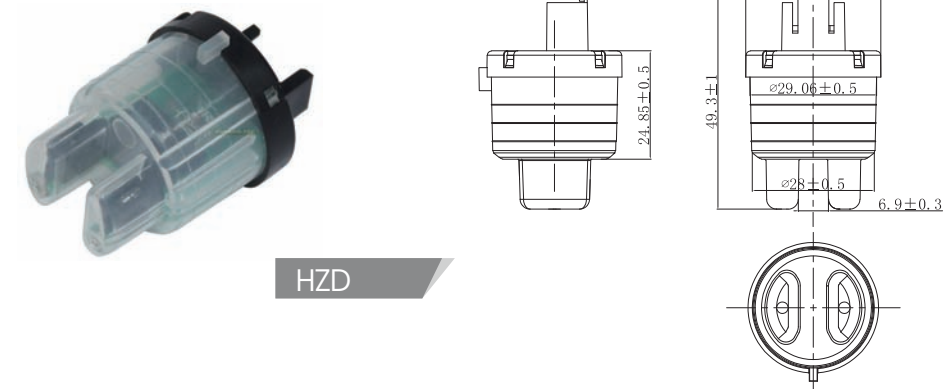


AM2001/AMT2001是溫敏電容型溫濕度傳感器，其中AM2001是單濕型，AMT2001是溫濕度一體型傳感器。傳感器信號採用仿真電壓輸出方式。本模塊具有精度高，可靠性高，一致性好，且帶溫度補償，確保長期穩定性好，使用方便及價格低廉等特點，尤其適合對質量，成本要求比較苛刻的企業使用。

AM2001/AMT2001 is thermal capacitance type temperature and humidity sensor, AM2001 is single wet sensor, AMT2001 is temperature and humidity integrated sensor. The output method of the sensor signal is analog signals.

Features:

- High accuracy
- High reliability
- Good stability
- Easy to use
- High quality
- Low cost



流量開關是用于電熱水器、太陽能熱水器、空調器以及其他水系統的水循環控制、進出水控制、水加熱控制、水泵開關控制、電磁閥通斷控制或出水斷電、出水通電控制等過程，當達到一定流量後將水流轉換為開關式電信號的傳感器件。流量開關由磁芯、復位彈簧、鍛銅或聚碳外殼和傳感器組成。

flow switch is used for electricity water- heater, solar energy water- heater, air conditioner and other the system of waters circulating control, pass in and out the water control, water heat the control, water pump switch control, electromagnetism valve breaks the control or a water power failure, a water switche on electricity control etc.

用于洗衣機的光學傳感器，利用發光二極管和光電三極管對特定波長的折射作用，來測量臟水的不透光度或者其他物質的濃度。通過使用光電三極管和發光二極管，洗衣機的光學傳感器測量從光源到接收器的光綫量，從而計算出水的濁度。

The turbidity sensor is the optical sensor mainly used for the washing machine. It makes use of refraction of LED and phototriode to particular wavelength to detect the opacity of dirty water and concentration of all the other species. Then it will calculate the turbidity of the water by using LED and phototriode and the optical sensor will measure the amount of light from the light source to the receiver.

最大開關電壓 Maximum switching voltage	100VDC	啓動水壓 Started pressure	≤0.1MPa
最大開關電流 Maximum switching current	0.5A	最少承受水壓 Minimum Withstand pressure	1.2MPa
最大崩潰電壓 The maximum breakdown voltage	200VDC	最大承受水壓 Maximum Withstand pressure	1.5MPa
最大負載電流 Maximum overload current	1.0A	使用溫度環境 Working temperature environment	1~120 度
最大接觸電阻 Max Contact Resistance	100 mΩ	使用壽命 Life	1x10 ⁵ (5VDC 10mA)
啓動水流量 Started the water	0.5L/min	響應時間 Response time	0.2s

工作溫度範圍 Operating temperature range	-30~80°C
貯藏溫度範圍 Storage temperature range	-30~80°C
額定電壓 Rated Voltage	5VDC
額定電流 Rated current	30mA
絕緣電阻 minimum insulation resistance	100MΩ / 500VDC
應用範圍 Application range	Applications to test water turbidity



針焰測試箱



水錘爆破



搖擺測試



冷熱衝擊測試箱



鹽霧實驗機



恒温恒濕測試箱



跌落測試臺



震動測試



輔導中

廠房概況

FACTORY PROFILE

