

# VALVOLE CORPO FILETTATO CON OTTURATORE BREVETTATO

## VALVES WITH THREADED POPPET BODY PATENTED SYSTEM



## Caratteristiche tecniche

### *Technical data*

Valvola 5 vie sistema misto con monotturatore centrale per la distribuzione agli utilizzi.  
Guarnizione a spola per il controllo degli scarichi; guarnizioni a labbro per il pilotaggio amplificato e per il ritorno a molla pneumatica.  
Questo metodo fornisce elevate prestazioni generali nonostante la minor corsa di comunicazione; ha grande portata, elevata velocità di scambio unita ad una minor usura.

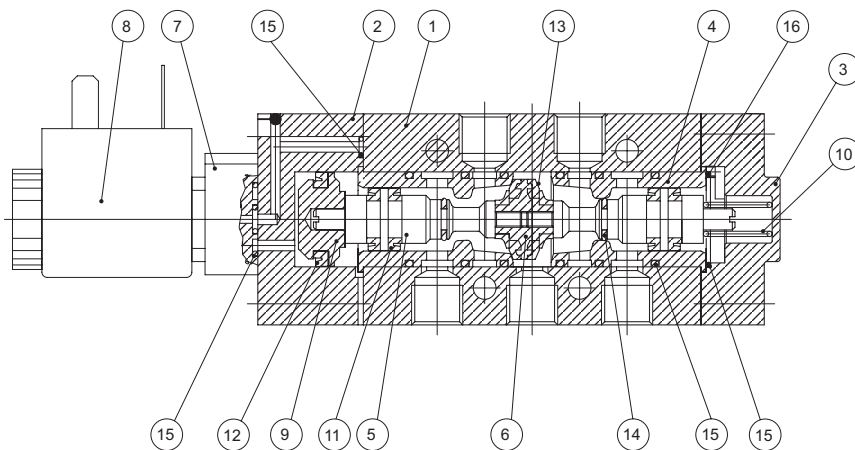
*5 ways valve with mixed system with central mono-poppet for the distribution of utilizations. Spool seal for the control of exhausts; lip seal for the amplified pilot and the pneumatic spring return.  
This way gives high general performances in spite of the smaller run of communication; it has a great load, high exchange speed joined together to a smaller wear and tear.*

# Chiave di codifica

## Codification key

Distributori 1/8" - 1/4" - 1/2" sistema otturatore

**-MF-M 7 0 00 N**



# Dati tecnici

## Technical data

Fluido: aria filtrata 50 $\mu$  non lubrificata; la lubrificazione, se utilizzata, dovrà essere ininterrotta

Pressione di lavoro: 2,5 ÷ 10 Bar

Temperatura di funzionamento: -20 ÷ 50°C

Temperatura fluido: + 50°C max

Guarnizioni dinamiche: poliuretano

Guarnizione statiche: NBR

*Fluid: filtered air 50 $\mu$  without lubrication; the lubrication, if used, must be continued.*

*Working pressure: 2,5 ÷ 10 Bar*

*Ambient temperature: -20 ÷ 50°C*

*Fluid temperature: + 50°C max*

*Dynamic seals: polyurethane*

*Static seals: NBR*

### Caratteristiche di portata - Capacity characteristics

	1/8"	1/4"	1/2"
Diametro nominale:	6,5	8	15
Portata a 6 bar:	1100	1600	4500

### Parti meccaniche - Mechanic items

POS.	DESCRIZIONE	MATERIALE	TRATTAMENTO SUPERFICIALE
1	Corpo valvola	Lega 11S	Brillantatura + decappaggio
2	Fondello	Lega 11S	Anodizzazione
3	Fondello	Lega 11S	Anodizzazione
4	Gabbietta	Lega 11S	
5	Alberino otturatore	Lega 11S	
6	Pistone otturatore	Lega 11S	
7	Basetta pilota	Zama	Verniciatura
8	Pilota elettromagn.	Ottone	Nichelatura
9	Pistone amplificazione	Lega 11S	
10	Molla	Acciaio INOX	

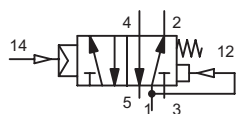
### Elementi di tenuta - Seal items

POS.	DESCRIZIONE	MATERIALE	Caratteristiche tecniche
11	Guarnizione a labbro	NBR	-30 ÷ +80 C°
12	Guarnizione a labbro	NBR	-30 ÷ +80 C°
13	Tampone	Poliuretano PU 85sh	Max 16 bar -30 ÷ +80 C°
14	Guarnizione di tenuta	NBR	-30 ÷ +80 C°
15	O ring	NBR	-30 ÷ +80 C°
16	O ring	NBR	-30 ÷ +80 C°

# Dati tecnici

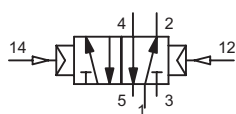
## Technical data

TIPO/SIMBOLO



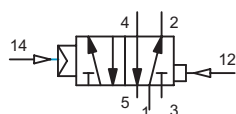
Taglia	Funzione	Ø mm	Portata NL/min	Press. bar	Tempo ms.		Codice
					Ecc. 14	Dis.12	
1/8"	Comando pneumatico ritorno a molla	6	1100	2,5 ÷ 10	8	10	-MF-M7100
1/4"		8	1600	2,5 ÷ 10	10	10	-MF-M8100
1/2"		15	4500	2,5 ÷ 10	10	10	-MF-M9100

TIPO/SIMBOLO



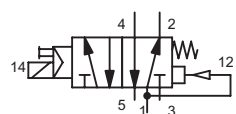
Taglia	Funzione	Ø mm	Portata NL/min	Press. bar	Tempo ms.		Codice
					Ecc. 14	Dis.12	
1/8"	Comando pneumatico bistabile	6	1100	2,5 ÷ 10	5	10	-MF-M7120
1/4"		8	1600	2,5 ÷ 10	6	10	-MF-M8120
1/2"		15	4500	2,5 ÷ 10	8	10	-MF-M9120

TIPO/SIMBOLO



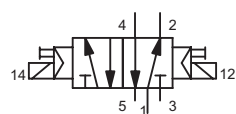
Taglia	Funzione	Ø mm	Portata NL/min	Press. bar	Tempo ms.		Codice
					Ecc. 14	Dis.12	
1/8"	Comando pneumatico bistabile differ.	6	1100	2,5 ÷ 10	5	8	-MF-M7121
1/4"		8	1600	2,5 ÷ 10	6	8	-MF-M8121
1/2"		15	4500	2,5 ÷ 10	8	10	-MF-M9121

TIPO/SIMBOLO



Taglia	Funzione	Ø mm	Portata NL/min	Press. bar	Tempo ms.		Codice
					Ecc. 14	Dis.12	
1/8"	Comando elettrico ritorno a molla	6	1100	2,5 ÷ 10	18	20	-MF-M7500
1/4"		8	1600	2,5 ÷ 10	22	22	-MF-M8500
1/2"		15	4500	2,5 ÷ 10	23	30	-MF-M9500

TIPO/SIMBOLO

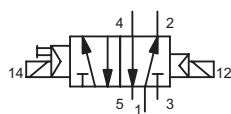


Taglia	Funzione	Ø mm	Portata NL/min	Press. bar	Tempo ms.		Codice
					Ecc. 14	Dis.12	
1/8"	Comando elettrico bistabile	6	1100	2,5 ÷ 10	14	14	-MF-M7520
1/4"		8	1600	2,5 ÷ 10	14	14	-MF-M8520
1/2"		15	4500	2,5 ÷ 10	16	16	-MF-M9520

# Dati tecnici

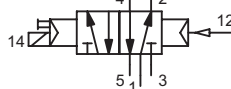
## Technical data

TIPO/SIMBOLO



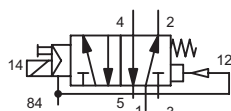
Taglia	Funzione	Ø mm	Portata NL/min	Press. bar	Tempo ms.		Codice
					Ecc. 14	Dis.12	
1/8"	Comando elettrico bistabile differ.	6	1100	2,5 ÷ 10	5	8	-MF-M7521
1/4"		8	1600	2,5 ÷ 10	6	8	-MF-M8521
1/2"		15	4500	2,5 ÷ 10	8	10	-MF-M9521

TIPO/SIMBOLO



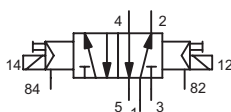
Taglia	Funzione	Ø mm	Portata NL/min	Press. bar	Tempo ms.		Codice
					Ecc. 14	Dis.12	
1/8"	Comando elettro-pneum. bistabile	6	1100	2,5 ÷ 10	5	7	-MF-M7527
1/4"		8	1600	2,5 ÷ 10	6	8	-MF-M8527
1/2"		15	4500	2,5 ÷ 10	8	10	-MF-M9527

TIPO/SIMBOLO



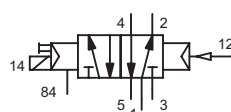
Taglia	Funzione	Ø mm	Portata NL/min	Press. bar	Tempo ms.		Codice
					Ecc. 14	Dis.12	
1/8"	Comando elettrico ritorno a molla asser. estern.	6	1100	2,5 ÷ 10	8	10	-MF-M7740
1/4"		8	1600	2,5 ÷ 10	10	10	-MF-M8740
1/2"		15	4500	2,5 ÷ 10	10	10	-MF-M9740

TIPO/SIMBOLO



Taglia	Funzione	Ø mm	Portata NL/min	Press. bar	Tempo ms.		Codice
					Ecc. 14	Dis.12	
1/8"	Comando elettrico bistabile asser. estern.	6	1100	2,5 ÷ 10	5	7	-MF-M7760
1/4"		8	1600	2,5 ÷ 10	6	8	-MF-M8760
1/2"		15	4500	2,5 ÷ 10	8	10	-MF-M9760

TIPO/SIMBOLO

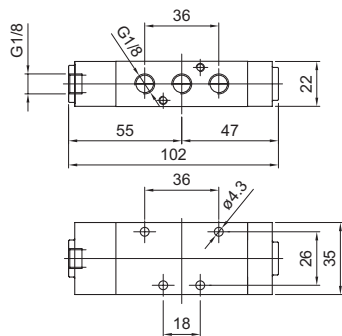


Taglia	Funzione	Ø mm	Portata NL/min	Press. bar	Tempo ms.		Codice
					Ecc. 14	Dis.12	
1/8"	Comando elettrico ritorno pneum. asser. estern.	6	1100	2,5 ÷ 10	5	7	-MF-M7762
1/4"		8	1600	2,5 ÷ 10	6	8	-MF-M8762
1/2"		15	4500	2,5 ÷ 10	8	10	-MF-M9762

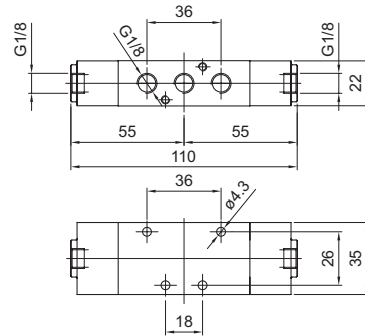
# Dimensioni di ingombro

## Overall dimensions

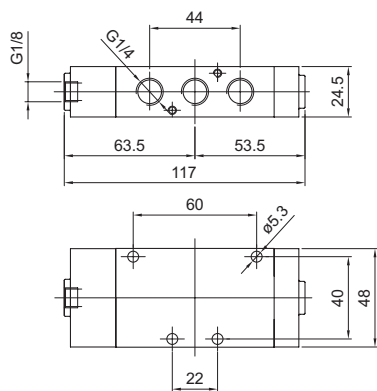
**Singolo impulso pneumatico 1/8"**  
*Single pneumatic impulse 1/8"*



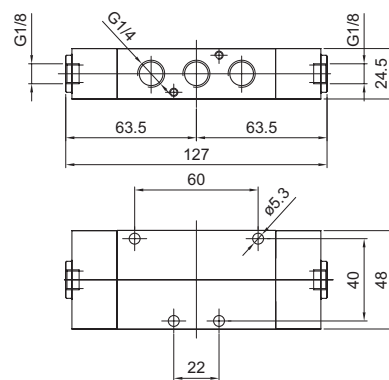
**Doppio impulso pneumatico 1/8"**  
*Double pneumatic impulse 1/8"*



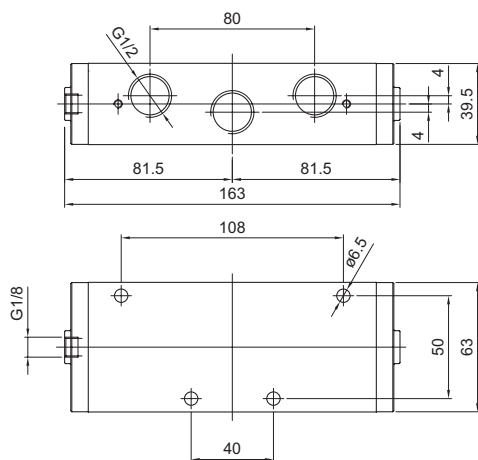
**Singolo impulso pneumatico 1/4"**  
*Single pneumatic impulse 1/4"*



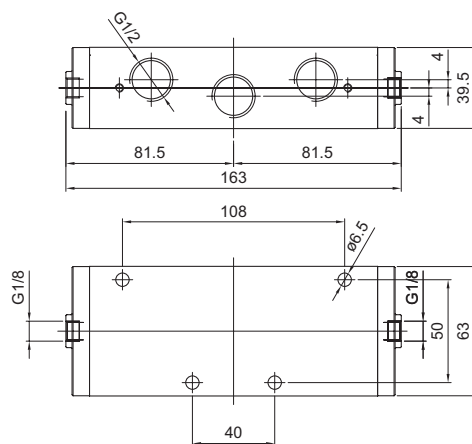
**Doppio impulso pneumatico 1/4"**  
*Double pneumatic impulse 1/4"*



**Singolo impulso pneumatico 1/2"**  
*Single pneumatic impulse 1/2"*



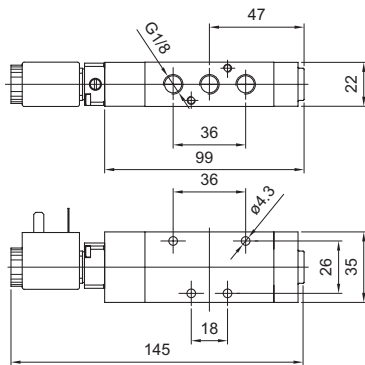
**Doppio impulso pneumatico 1/2"**  
*Double pneumatic impulse 1/2"*



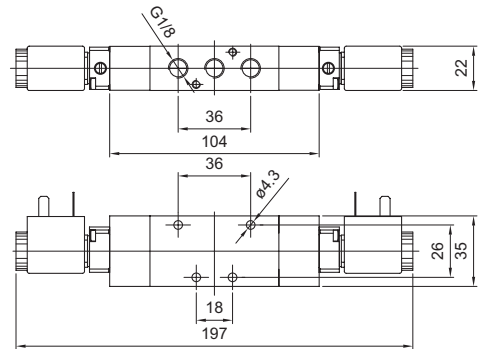
# Dimensioni di ingombro

## Overall dimensions

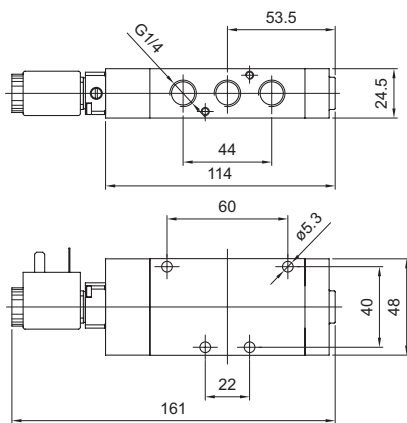
**Singolo impulso elettrico 1/8"**  
*Single electric impulse 1/8"*



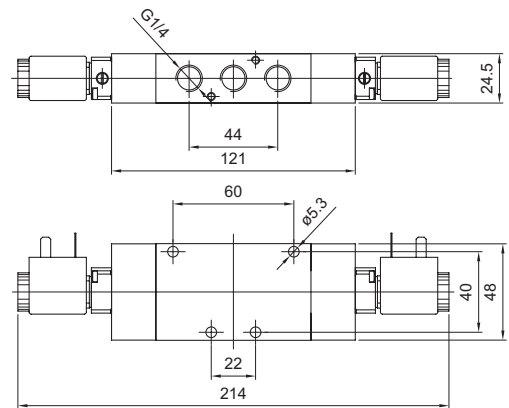
**Doppio impulso elettrico 1/8"**  
*Double electric impulse 1/8"*



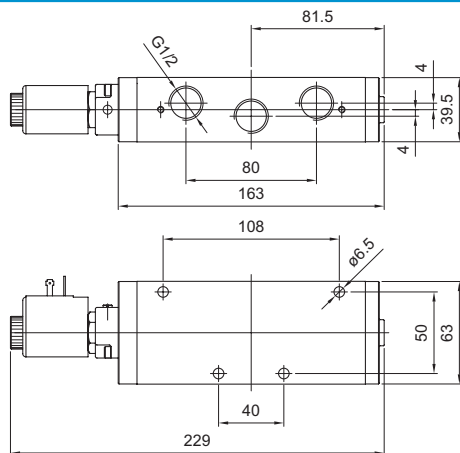
**Singolo impulso elettrico 1/4"**  
*Single electric impulse 1/4"*



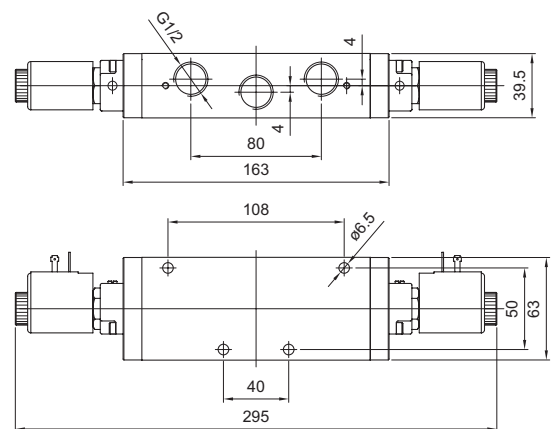
**Doppio impulso elettrico 1/4"**  
*Double electric impulse 1/4"*



**Singolo impulso elettrico 1/2"**  
*Single electric impulse 1/2"*



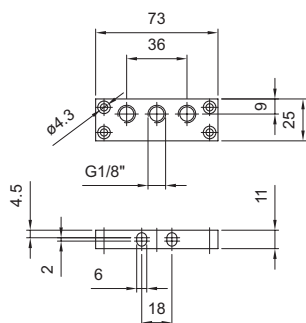
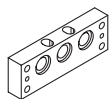
**Doppio impulso elettrico 1/2"**  
*Double electric impulse 1/2"*



# Sottobase per valvola da 1/8"

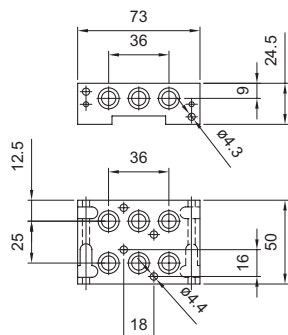
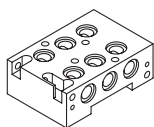
## Subbase for valve 1/8"

TIPO/DIMENSIONI



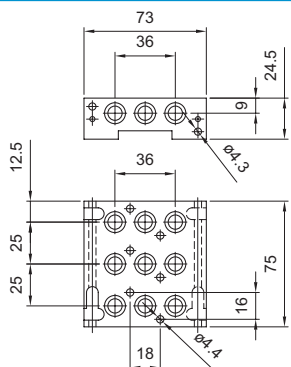
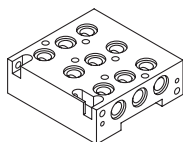
Taglia	Definizione	Materiale	Codice
1/8"	Piastra entrata	Alluminio 11S	-MF-S7800

TIPO/DIMENSIONI



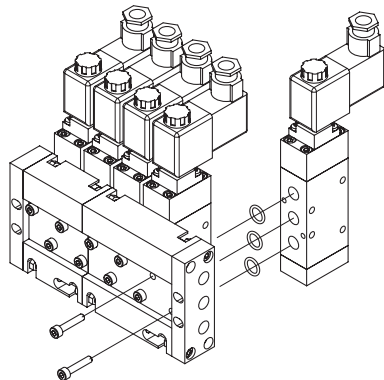
Taglia	Definizione	Materiale	Codice
1/8"	Sottobase 2 posti	Alluminio 11S	-MF-S7902

TIPO/DIMENSIONI



Taglia	Definizione	Materiale	Codice
1/8"	Sottobase 3 posti	Alluminio 11S	-MF-S7903

### Schema di montaggio *Assembly diagram*

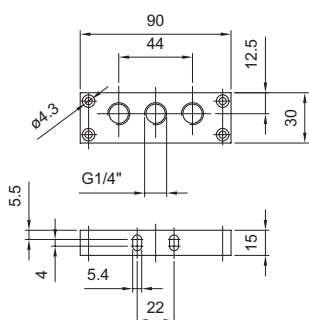
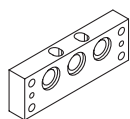




# Sottobase per valvola da 1/4"

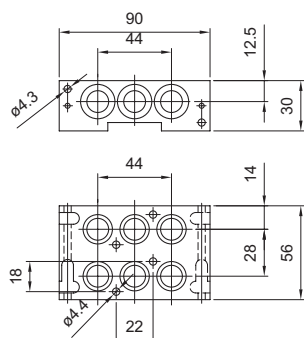
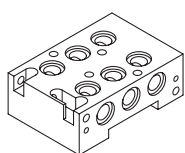
## Subbase for valve 1/4"

TIPO/DIMENSIONI



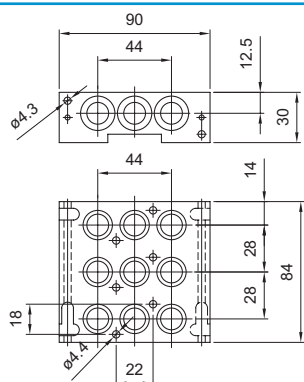
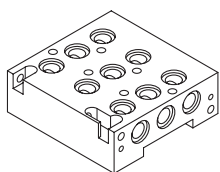
Taglia	Definizione	Materiale	Codice
1/4"	Piastra entrata	Alluminio 11S	-MF-S8600

TIPO/DIMENSIONI



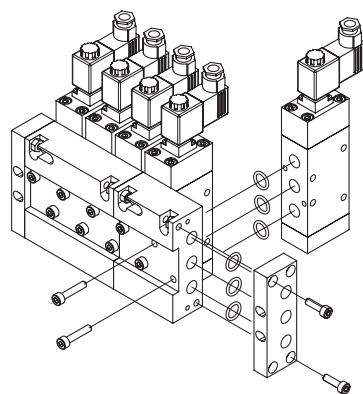
Taglia	Definizione	Materiale	Codice
1/4"	Sottobase 2 posti	Alluminio 11S	-MF-S8602

TIPO/DIMENSIONI



Taglia	Definizione	Materiale	Codice
1/4"	Sottobase 3 posti	Alluminio 11S	-MF-S8603

### Schema di montaggio *Assembly diagram*

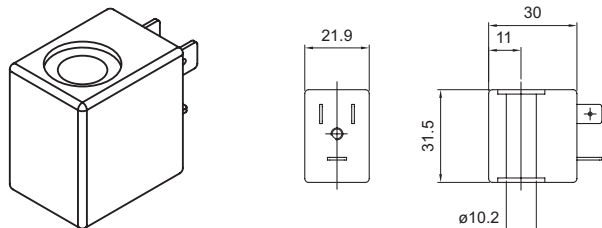


# Accessori: bobine e connettori

## Accessories: coils and connectors

### Bobine Coils M1 lato 22 mm

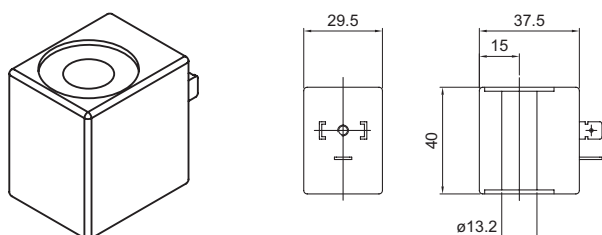
TIPO/DIMENSIONI



Taglia	Definizione	Tensione	Potenza	Codice
M1	Funz. 100% EDP Tens. ±10% Frequenza ±5%	12 cc	3,5 W	-MF-0050
M1		24 cc	3,5 W	-MF-0051
M1		24 ca	5 VA	-MF-0106
M1		110 ca	5 VA	-MF-0108
M1		220 ca	5 VA	-MF-0124

### Bobine Coils M2 lato 30 mm

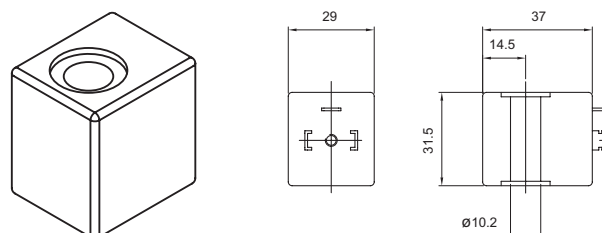
TIPO/DIMENSIONI



Taglia	Definizione	Tensione	Potenza	Codice
M2	Funz. 100% EDP Tens. ±10% Frequenza ±5%	12 cc	11 W	-MF-0501
M2		24 cc	11 W	-MF-0502
M2		24 ca	10 VA	-MF-0507
M2		110 ca	10 VA	-MF-0508
M2		220 ca	10 VA	-MF-0510

### Bobine Coils M3 lato 30 mm

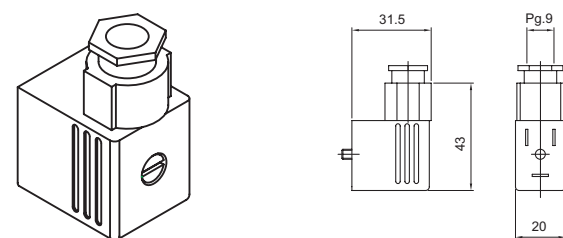
TIPO/DIMENSIONI



Taglia	Definizione	Tensione	Potenza	Codice
M3	Funz. 100% EDP Tens. ±10% Frequenza ±5%	12 cc	2,5 W	-MF-0301
M3		24 cc	2,5 W	-MF-0302
M3		24 ca	3,3 VA	-MF-0307
M3		110 ca	3,3 VA	-MF-0308
M3		220 ca	3,3 VA	-MF-0310

### Connettori Connectors DIN 43650-B

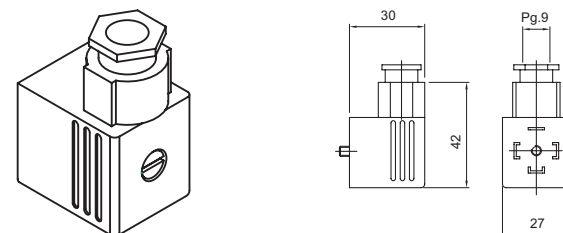
TIPO/DIMENSIONI



Taglia	Definizione	Tensione	Potenza	Codice
M1	IP 65 PG9			-MF-5110
M1		Led + vdr	24 volt	-MF-5112L
M1		Led + vdr	110 volt	-MF-5113L
M1		Led + vdr	220 volt	-MF-5114L

### Connettori Connectors DIN 43650-A

TIPO/DIMENSIONI



Taglia	Definizione	Tensione	Potenza	Codice
M2-3	IP 65 PG9			-MF-5111
M2-3		Led + vdr	24 volt	-MF-5115L
M2-3		Led + vdr	110 volt	-MF-5116L
M2-3		Led + vdr	220 volt	-MF-5117L