

# BVM

CORPORATION  
USA







**Globally Recognized, USA made  
handling tools for 30 years  
The choice for rigs.**

# BVM CORPORATION

## USA

**BVM Manufacturing Company Incorporated maintains the following API Certifications:**

 <p><b>Certificate of Authority to use the Official API Monogram</b> License Number: 7K-0247 ORIGINAL</p> <p>The Applicant has been determined to be qualified to use the Official API Monogram in accordance with the requirements of the American Petroleum Institute's API Specification API Spec 7K and is authorized to use the Official API Monogram on its products.</p> <p><b>BVM CORPORATION</b> 430 South Navajo Street Denver, Colorado</p> <p>Effective Date: JULY 31, 2012 Expiration Date: AUGUST 31, 2016</p> <p>To verify the authenticity of this license, go to <a href="http://www.api.org/cert">www.api.org/cert</a>.</p> 	 <p><b>Certificate of Authority to use the Official API Monogram</b> License Number: RC-0145 ORIGINAL</p> <p>The Applicant has been determined to be qualified to use the Official API Monogram in accordance with the requirements of the American Petroleum Institute's API Specification API Spec 9C and is authorized to use the Official API Monogram on its products.</p> <p><b>BVM CORPORATION</b> 430 South Navajo Street Denver, Colorado</p> <p>Effective Date: AUGUST 31, 2012 Expiration Date: AUGUST 31, 2016</p> <p>To verify the authenticity of this license, go to <a href="http://www.api.org/cert">www.api.org/cert</a>.</p> 
-----------------------------------------------------------------------------------------------------------------------------------------------------------------------------------------------------------------------------------------------------------------------------------------------------------------------------------------------------------------------------------------------------------------------------------------------------------------------------------------------------------------------------------------------------------------------------------------------------------------------------------------------------------------------------------------------------------------------------------------------------------------------------------------------------------------------------------	-------------------------------------------------------------------------------------------------------------------------------------------------------------------------------------------------------------------------------------------------------------------------------------------------------------------------------------------------------------------------------------------------------------------------------------------------------------------------------------------------------------------------------------------------------------------------------------------------------------------------------------------------------------------------------------------------------------------------------------------------------------------------------------------------------------------------------------



**Certificate of Registration**  
API REGISTRATION NUMBER: 1051  
The Applicant has been determined to be qualified to use the Official API Monogram in accordance with the requirements of the American Petroleum Institute's API Specification API Spec Q1 and is authorized to use the Official API Monogram on its products.

**BVM CORPORATION**  
430 South Navajo Street  
Denver, Colorado

Effective Date: August 31, 2012  
Expiration Date: August 31, 2016  
Registered Since: August 14, 2008




**Certificate of Registration**  
REGISTRATION NO. Q1-0844  
The Applicant has been determined to be qualified to use the Official API Monogram in accordance with the requirements of the American Petroleum Institute's API Specification API Spec Q1 and is authorized to use the Official API Monogram on its products.

**BVM CORPORATION**  
430 South Navajo Street  
Denver, Colorado

**API Specification Q1**  
Design, Manufacture and Repair of Hoisting and Well Servicing Equipment for the Oil and Gas Industry

Effective Date: August 31, 2013  
Expiration Date: August 31, 2016  
Registered Since: August 31, 2008



**Note: Not all products listed in this catalog are authorized to carry the API Monogram.**

[SALES@BVMCORP.COM](mailto:SALES@BVMCORP.COM)  
877-975-1402  
303-975-1402  
FAX - 303-975-0981  
INTL - (01)303-975-1402  
WWW.BVMCORP.COM



# ELEVATORS

## SIDE DOOR 90 DEGREE ELEVATORS

PART NO.	TYPE	TONS	SIZE	WEIGHT
33854	SLX	100	1.660" - 5 1/2"	175
31239	SLX	150	31/2" - 8 5/8"	340
33950	SLX	150	9 5/8" - 10 3/4"	420
33982	SLX	150	11 3/4" - 13 3/8"	460
33632	SLX	150	16" - 20"	664
33175	SLX	150	24" - 30"	1075
33180	SLX	150	36"	2100
43239	SLX	250	4 1/2" - 8 5/8"	550
43950	SLX	250	9 5/8" - 10 3/4"	650
43982	SLX	250	11 3/4" - 13 3/8"	525
43632	SLX	250	16" - 20"	1000
43175	SLX	250	24" - 30"	1092
43180	SLX	250	36"	2200
29965	SX	350	6 5/8" - 13 3/8"	1076
29966	SX	350	16" - 20"	280
29964	SX	500	6 5/8" - 13 3/8"	1180
30729	SX	500	16" - 20"	1346
46950	SX	750	7 5/8" - 13 3/8"	2650

## CENTER LATCH 18 DEGREE DRILL PIPE ELEVATORS

PART NO.	TYPE	TONS	SIZE	WEIGHT
30157	MG	100	2 3/8" - 5"	235
30156	RG	150	2 3/8" - 5"	330
13884	MGG	175	2 1/8" - 5"	52
35005	MGG	250	2 3/8" - 5 1/2"	571
31068	GG	350	2 3/8" - 5 1/2"	734
70013	HGG	500	2 7/8" - 6 5/8"	980

## CENTER LATCH 90 DEGREE COLLAR TYPE ELEVATORS

PART NO.	TYPE	TONS	SIZE	WEIGHT
32387	TA	35	1.050" - 2 7/8"	55
32385	TA	65	1.660" - 2 7/8"	113
32386	TA	65	3 1/2" - 4 1/2"	150
32383	TA	100	2 3/8" - 2 7/8"	127
32384	TA	100	3 1/2" - 4 1/2"	157
29960	TA	100	5 1/2" - 8 5/8"	352
32754	TA	150	5" - 8 5/8"	413
39342	TA	150	8 1/2" - 11 3/4"	430
25462	RA	125	2 3/8" - 3 1/2"	158
25459	RA	150	2 3/8" - 4 1/2"	220
13373	RA	250	3 1/2" - 7"	352
12942	RAA	350	4 1/2" - 5 1/2"	550

## SINGLE JOINT TYPE ELEVATORS

PART NO.	TYPE	TONS	SIZE	WEIGHT
183	SJ	5	2 3/8" - 5 1/2"	47
184	SJ	5	5 3/4" - 7 5/8"	52
185	SJ	5	8 5/8" - 9 5/8"	68
186	SJ	5	10 3/4" - 13 5/8"	114
187	SJ	5	16" - 20"	158
188	SJ	5	21 1/2" - 24 1/2"	295
189	SJ	5	24" - 30"	412
200	SJ	6	36"	690

## SUCKER ROD TYPE ELEVATORS

PART NO.	TYPE	TONS	SIZE	WEIGHT
84001	SR	20	5/8" - 3/4"	30
84002	SR	20	3/4" - 7/8"	30
84003	SR	20	1"	30
84004	SR	20	1 1/8"	31
84003P	SRP	20	5/8" - 1 1/8"	34
84018	PLATE		5/8" - 3/4"	0.25
84019	PLATE		3/4" - 7/8"	0.25
84020	PLATE		1"	0.25
84021	PLATE		1 1/8"	0.25

## SLIP TYPE ELEVATORS - LESS SLIPS AND GUIDES

PART NO.	TYPE	TONS	SIZE	WEIGHT
28750	LYT	20	1 1/2" - 2 1/16"	57
29328	MYT	40	1.315" - 2 7/8"	157
23105	YT	75	1.315" - 3 1/2"	356
39284	HYT	150	2 3/8" - 3 1/2"	525
24140	YC	75	3 1/2" - 7"	441
24139	MYC	125	3 1/2" - 7"	465
55310	HYC	200	3 1/2" - 7 5/8"	982

Note: Slip type elevators sold without Slips Setting Rings or Guides  
Slips sold with inserts and without setting rings

## SLIPS - GUIDES - INSERTS - SETTING RINGS

SIZE	SLIP	INSERT	NO.	SETTING RING
2 1/16" X 1.050"	28745-7	29370	8	28735
2 1/16" X 1.315"	28745-2	28749	8	28736
3 1/16" X 1.660"	28745-3	28778	8	28784
2 1/16" X 1.900"	28745-4	28775	8	28783
2 1/16" X 2.000"	28745-5	28772	8	28737
2 1/16" X 2 1/16"	28745-6	28772	8	28782

SIZE	SLIP	INSERT	NO.	SETTING RING
2 7/8" X 1.315"	29343-7	29259	8	29354
2 7/8" X 1.660"	29343-6	29258	8	29353
2 7/8" X 1.900"	29343-5	29257	8	29352
2 7/8" X 2.000"	29343-4	29256	8	29351
2 7/8" X 2 1/16"	29343-3	29256	8	29350
2 7/8" X 2 3/8"	29343-2	29255	8	29345
2 7/8" X 2 7/8"	29343-1	24773	8	29348

SIZE	SLIP	INSERT	NO.	SETTING RING
2 7/8" X 1.315"	23108-11	29259	12	29001
2 7/8" X 1.660"	23108-10	29258	12	27810
2 7/8" X 1.900"	23108-9	29257	12	27811
2 7/8" X 2.000"	23108-8	29256	12	27821
2 7/8" X 2 1/16"	23108-7	29256	12	27812
2 7/8" X 2 3/8"	23108-6	29255	12	27694
2 7/8" X 2 7/8"	23108-4	24773	12	27695
3 1/2" X 2 7/8"	23108-3	30358	24	27695
3 1/2" X 3 1/2"	23108-5	24774	24	27813

SIZE	SLIP	INSERT	NO.	SETTING RING
2 7/8" X 2 3/8"	39259-4	29255	16	39214-1
2 7/8" X 2 7/8"	39259-2	24773	16	39214-2
3 1/2" X 2 7/8"	39258-4	30358	32	39214-3
3 1/2" X 3 1/2"	39258-2	24774	32	39214-4

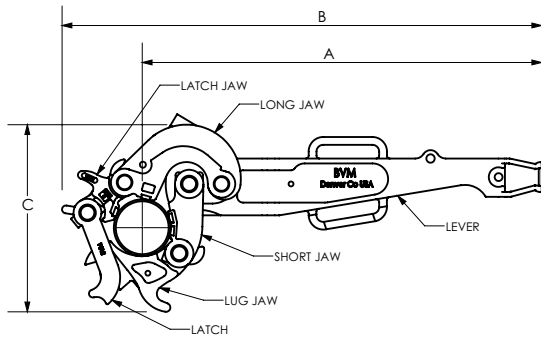
SIZE	SLIP	INSERT	NO.	GUIDE PL.	SETTING RING
4 1/2" X 3 1/2"	34931	24779	16	26827-1	34932
4 1/2" X 4"	26830	24781	16	26827	30209
4 1/2" X 4 1/2"	24072-5	16408	16	24071-4	30219
5 1/2" X 5"	24072-7	24783	16	24071	30220
5 1/2" X 5 1/2"	24072-2	16407	16	24071-1	30223
7" X 6 5/8"	24077-7	24748	24	24071-3	30226
7" X 7"	24077-1	16407	24	24071-2	30229

SIZE	SLIP	INSERT	NO.	GUIDE PL.	SETTING RING
4 1/2" X 3 1/2"	55509	24779	24	26827-1	55516
4 1/2" X 4"	55510	24781	24	26827	55517
4 1/2" X 4 1/2"	55511	16408	24	24071-4	55518
5 1/2" X 5"	55512	24783	36	24071	55519
5 1/2" X 5 1/2"	55513	16407	36	24071-1	55520
7" X 6 5/8"	55514	24748	48	24071-3	55521
7" X 7"	55515	16407	48	24071-2	55522
7 5/8" X 7 5/8"	70009	70010	48	24071-6	70012



SALES@BVMCORP.COM  
877-975-1402  
303-975-1402  
FAX - 303-975-0981  
INTL - (01)303-975-1402  
WWW.BVMCORP.COM

# MANUAL TONGS



## BVM TYPE C MANUAL TONG Max. 35,000 FT/LB 2 3/8" - 10 3/4"

PART NO.	DESCRIPTION	SIZE	WEIGHT
75117-L	C TONG WITH STD LEVER, LESS LUG JAWS		276
75117-S	C TONG WITH 36" LEVER, LESS LUG JAWS		266
75728-1	LUG JAW 15,000 ft lb	2 3/8" - 3.668"	33
75939-4	LUG JAW 25,000 ft lb	3 1/2" - 5 1/4"	44
75940-2	LUG JAW 35,000 ft lb	5 1/4" - 7"	46
75701-1	LUG JAW 25,000 ft lb	7" - 8 5/8"	58
75703-1	LUG JAW 35,000 ft lb	9 5/8" - 10 3/4"	80
75943-1	LUG JAW 25,000 ft lb (OPTIONAL)	4 1/2" - 6 1/2"	42
75727-1	LUG JAW 15,000 ft lb (OPTIONAL)	2 7/8" - 4 1/4"	30

## BVM TYPE B MANUAL TONG Max. 55,000 FT/LB 3 1/2" - 13 3/8"

PART NO.	DESCRIPTION	SIZE	WEIGHT
67114	B TONG WITH 48" LEVER, LESS LUG JAWS		518
67114-1	B TONG WITH 36" LEVER, LESS LUG JAWS		467
67765-1	LUG JAW 35,000 ft lb	3 1/2" - 5"	30
67622-1	LUG JAW 55,000 ft lb	5" - 6 3/4"	37
67195-1	LUG JAW 55,000 ft lb	6 5/8" - 9"	43
67297-1	LUG JAW 40,000 ft lb	9" - 10 3/4"	60
67285-1	LUG JAW 30,000 ft lb	11 3/4"	62
67592-1	LUG JAW 30,000 ft lb	13 3/8"	72
67927-1	LUG JAW 55,000 ft lb (OPTIONAL)	4" - 5 1/2"	32
67196-1	LUG JAW 55,000 ft lb (OPTIONAL)	4 1/4" - 6 3/4"	43
67569-1	LUG JAW 30,000 ft lb (OPTIONAL)	12 3/4" - 13"	73

CASING HEADS SOLD COMPLETE LESS LEVER AND HANGER

## BVM TYPE B CASING TONG 25,000 FT/LB 13 3/8" - 14 1/2"

PART NO.	DESCRIPTION	SIZE	WEIGHT
69100-100	CASING HEAD		340
69100-110	CASING HEAD		352
69100-120	CASING HEAD	16" - 17 1/2"	373
69100-130	CASING HEAD	17 1/2" - 19"	385
69100-140	CASING HEAD	19" - 20"	312
69100-150	CASING HEAD	20" - 21 1/2"	418
69100-160	CASING HEAD	21 1/2" - 23"	430
69100-170	CASING HEAD	24" - 25 1/2"	565
69100-175	CASING HEAD	25 1/2" - 27"	485
69100-180	CASING HEAD	30 1/2"	540
69100-190	CASING HEAD	36 1/2"	615
67264-1	HANGER ASSEMBLY		49
67265-1	LEVER ASSEMBLY STD		155
67265-2	LEVER ASSEMBLY 36"		136

## BVM TYPE DB CASING TONG Max. 65,000 FT/LB 3 1/2" - 17"

PART NO.	DESCRIPTION	SIZE	WEIGHT
45801-1	DB TONG WITH LEVER, LESS LUG JAWS		443
45718-1	LUG JAW 65,000 ft lb	3 1/2" - 8 1/4"	88
45719-1	LUG JAW 65,000 ft lb	8" - 11 1/4"	112
45720-1	LUG JAW 40,000 ft lb	11 3/4" - 14 3/8"	78
45721-1	LUG JAW 40,000 ft lb	16" - 17"	96
45722	HINGE JAW - REQ. FOR SIZES LARGER THAN 8 1/2"		54
45728	SAFETY HANDLES - SET OF 2 FOR 1 HANDLE		6

## BVM TYPE MS TONG Max. 6,500 FT/LB 1.9" - 6 1/8"

PART NO.	DESCRIPTION	SIZE	WEIGHT
40423	MS TONG WITH LEVER, LESS JAWS	1.9" - 4 1/2"	27
40427	MS TONG WITH LEVER, LESS JAWS	4 1/2" - 6 1/8"	27
40436-1	LUG JAW	1.9" - 2 1/16"	2
40437-1	LUG JAW	2 3/8" - 3.668"	4.5
40438-1	LUG JAW	3 1/2" - 4 1/2"	4.5
40439-1	LUG JAW	4 1/2" - 5 1/4"	4.5
40441-1	LUG JAW	5 1/4" - 6 1/8"	5
40442	SHORT JAW - USED THIS SIZE ONLY	4 1/2" - 6 1/8"	3
40443	LATCH JAW - USED THIS SIZE ONLY	4 1/2" - 6 1/8"	3

## BVM TYPE LF TONG Max. 14,000 FT/LB 2 3/8" - 8 5/8"

PART NO.	DESCRIPTION	SIZE	WEIGHT
80121	LF TONG WITH LEVER, LESS LUG JAWS		52
80911	LUG JAW 10,000 ft lb	2 3/8" - 3 1/2"	12
80912	LUG JAW 10,000 ft lb	3 1/2" - 5 3/8"	15
80913	LUG JAW 14,000 ft lb	4 3/4" - 6 1/4"	24
80930	LUG JAW 12,000 ft lb	5 3/4" - 7 1/4"	35
80931-1	LUG JAW ASSEMBLY 10,000 ft lb	8 5/8"	56

## BVM TYPE AAX TONG Max. 55,000 FT/LB 2 3/8" - 13 3/8"

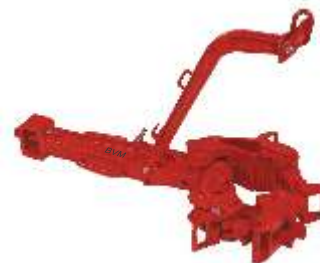
PART NO.	DESCRIPTION	SIZE	WEIGHT
1300-1	AAX TONG WITH 48" LEVER, LESS LUG JAWS		394
1300-2	AAX TONG WITH 42" LEVER, LESS LUG JAWS		387
1300-3	AAX TONG WITH 36" LEVER, LESS LUG JAWS		367
1370	LUG JAW 40,000 ft lb	2 7/8" - 3 3/4"	33
1371	LUG JAW 40,000 ft lb	3 1/2" - 4 1/2"	38
1372	LUG JAW 55,000 ft lb	4" - 5 1/4"	40
1373	LUG JAW 55,000 ft lb	5" - 7 1/4"	44
1374	LUG JAW 55,000 ft lb	6 7/8" - 8 5/8"	55
1375	LUG JAW 30,000 ft lb	9" - 10 3/4"	64
1376	LUG JAW 30,000 ft lb	10 3/4" - 11 3/4"	68
1377	LUG JAW 30,000 ft lb	13 3/8"	90

## BVM TYPE H TONG Max. 80,000 FT/LB 3 1/2" - 13 3/8"

PART NO.	DESCRIPTION	SIZE	WEIGHT
1800	H TONG WITH 48" LEVER, LESS LUG JAWS		510
1871	LUG JAW	3 1/2" - 4 1/2"	34
1872	LUG JAW	4" - 5 1/4"	48
1873	LUG JAW	5" - 6"	66
1874	LUG JAW	6" - 7"	82
1875	LUG JAW	7" - 9"	72
1876	LUG JAW	9" - 10 3/4"	100
1877	LUG JAW	10 3/4" - 11 3/4"	96
1878	LUG JAW	13 3/8"	108

## BVM TYPE SDD TONG Max. 100,000 FT/LB 4" - 17"

PART NO.	DESCRIPTION	SIZE	WEIGHT
55701-1	SDD TONG WITH 48" LEVER, LESS LUG JAWS		690
55702-1	LUG JAW 100,000 ft lb	4" - 8 1/2"	138
55703-1	LUG JAW 100,000 ft lb	8 1/2" - 12"	96
55704-1	LUG JAW 75,000 ft lb	12" - 15"	135
55705-1	LUG JAW 60,000 ft lb	15 3/4"	156
55706-1	LUG JAW 60,000 ft lb	16" - 17"	120
55707	HINGE JAW REQUIRED - SIZES 8 1/2" & LARGER		98



**BVM**  
CORPORATION  
USA

[SALES@BVMCORG.COM](mailto:SALES@BVMCORG.COM)  
877-975-1402  
303-975-1402  
FAX - 303-975-0981  
INTL - (01)303-975-1402  
[WWW.BVMCORG.COM](http://WWW.BVMCORG.COM)

# MANUAL SLIPS

## ROTARY SLIPS COMPLETE

BODY	API PIPE SIZE O.D. INCH	SDS PART #	INSERTS	WEIGHT	SDML PART #	INSERTS	WEIGHT	SDXL PART#	INSERTS	WEIGHT
3 1/2"	2 3/8"	3901	2160-24	181	15524	2160-30	193			
3 1/2"	2 7/8"	3903	2161-24	181	15523	2161-30	188			
3 1/2"	3 1/2"	3905	2162-24	181	15522	2162-30	181			
4 1/2"	3 1/2"	3907	2163-36	162	15563	2163-45	207	15515	2163-54	273
4 1/2"	4"	3909	2164-36	155	15564	2164-45	199	15514	2164-54	257
4 1/2"	4 1/2"	3911	2165-36	146	15565	2165-45	188	15513	2165-54	254
5"	4"				15567	2168-45	204	15518	2168-54	237
5"	4 1/2"				15568	2166-45	196	15517	2166-54	227
5"	5"				15569	2167-45	185	15516	2167-54	225
5 1/2"	4 1/2"				15571	2168-45	200	15521	2168-54	234
5 1/2"	5"				15572	2169-45	192	15520	2169-54	224
5 1/2"	5 1/2"				15573	2170-45	181	15519	2170-54	210
7"	5 3/4"							86719-1	2521-72	272
7"	5 7/8"							86722-1	2656-72	262
7"	6"							86719-2	2632-60	252
7"	6 5/8"							86720	2172-72	242
7"	7"							86719	2173-72	243



## CASING SLIPS CMSXL

PART NO.	3" TAPER	SIZE	SEGMENTS	WEIGHT	CIRCULAR BUTTONS
98700		5 1/2"	11	174	2619-132
98701		6 5/8"	12	200	2628-144
98702		7"	12	184	2619-144
98703		7 5/8"	12	184	2630-144
98704		8 5/8"	13	181	2630-156
98705	98505	9 5/8"	14	192	2630-168
98706	98506	10 3/4"	15	252	2630-180
98707	98507	11 3/4"	17	265	2627-204
98708	98508	13 3/8"	18	278	2630-216
98709	98509	16"	21	317	2631-252
98720	98520	18 5/8"	25	369	2626-300
98721	98521	20"	26	382	2631-312
98722	98522	24"	30	443	2631-360
98723	98523	26"	33	486	2631-396
98724	98524	30"	37	536	2631-444
98725	98525	36"	44	637	2631-528



## CONDUCTOR PIPE SLIPS CPS

4" TAPER PART NO.	3" TAPER PART NO.	SIZE	SEGMENTS/ SPACERS	WEIGHT	CIRCULAR BUTTONS
99725	99525	24"	13/12	276	2631-156
99726	99526	26"	14/14	296	2631-168
99727	99527	30"	16/15	319	2631-193



## CASING SLIPS UC-3 3" TAPER

PART #	SIZE	SEGMENTS	WEIGHT	SLIP
7704-5025	13 3/8"	12	195	7704-A-38
7704-5036	16"	14	226	7704-A-45
7704-5035	18 5/8"	17	283	7704-A-5000
7704-5034	20"	17	325	7704-A-99
7704-5001	24"	19	312	7704-A-99
7704-5006	26"	21	325	7704-A-100
7704-5005	30"	24	367	7704-A-100
7704-5007	36"	28	437	7704-A-100

## DRILL COLLAR SLIP - TYPE DCS

PART #	TYPE	SIZE	SEGMENTS	WEIGHT	CIRCULAR BUTTONS
2572	DCS-S	3" - 4"	7	112	2628-49
2573	DCS-S	4" - 4 7/8"	7	109	2620-49
2552	DCS-R	4 1/2" - 6"	9	120	2628-63
2550	DCS-R	5 1/2" - 7"	9	112	2620-63
2501	DCS-L	5 1/2" - 7"	11	154	2513-88
2503	DCS-L	6 3/4" - 8 1/4"	11	151	2630-88
2507	DCS-L	8" - 9 1/2"	12	173	2630-96
2530	DCS-L	8 1/2" - 10"	13	185	2627-104
2508	DCS-L	9 1/4" - 11 1/4"	14	198	2630-112
2534	DCS-L	11" - 12 3/4"	17	213	2625-136
2536	DCS-L	12" - 14"	17	207	2630-136



SALES@BVMCORN.COM  
 877-975-1402  
 303-975-1402  
 FAX - 303-975-0981  
 INTL - (01)303-975-1402  
 WWW.BVMCORN.COM

# SAFETY CLAMPS



## TYPE T - COMPLETE WITH WRENCH, LESS BOX

PART NO.	COLLAR SIZE	DESCRIPTION	LINKS	WEIGHT
88000	1 1/8" - 2"		4	36
88001	2 1/8" - 3 1/4"		5	40
88002	3 1/4" - 4 1/2"		6	42
99612-T		BOX - TYPE T		42



## TYPE CS - COMPLETE WITH WRENCH, LESS BOX

PART NO.	COLLAR SIZE	DESCRIPTION	LINKS	WEIGHT
CS99500	3 3/4" - 4 5/8"		7	58
CS99501	4 1/2" - 5 5/8"		8	64
CS99502	5 1/2" - 6 5/8"		9	70
CS99503	6 1/2" - 7 5/8"		10	76
CS99504	7 1/2" - 8 5/8"		11	81
CS99505	8 1/2" - 9 5/8"		12	86
CS99506	9 1/2" - 10 5/8"		13	91
99612-C		BOX C - S AND M		42

## TYPE CM - COMPLETE WITH WRENCH, LESS BOX

PART NO.	COLLAR SIZE	DESCRIPTION	LINKS	WEIGHT
CM99507	10 1/2" - 11 5/8"		14	95
CM99508	11 1/2" - 12 5/8"		15	100
CM99509	12 1/2" - 13 5/8"		16	104
CM99510	13 1/2" - 14 5/8"		17	108
CM99511	14 1/2" - 15 5/8"		18	113
99612-C		BOX C - S AND M		42

## TYPE CL - COMPLETE WITH WRENCH, LESS BOX

PART NO.	COLLAR SIZE	DESCRIPTION	LINKS	WEIGHT
CL99512	15 1/2" - 18"	DOUBLE SCREW	18	140
CL99513	16 1/2" - 19"	DOUBLE SCREW	19	146
CL99514	17 1/2" - 20"	DOUBLE SCREW	20	152
CL99515	18 1/2" - 21"	DOUBLE SCREW	21	156
CL99516	19 1/2" - 22"	DOUBLE SCREW	22	161
CL99517	20 1/2" - 23"	DOUBLE SCREW	24	196
CL99518	24 1/2" - 27"	DOUBLE SCREW	27	225
CL99519	29 1/2" - 32"	DOUBLE SCREW	32	229
CL99525	35 1/2" - 38"	DOUBLE SCREW	38	234
CL99526	41 1/2" - 44"	DOUBLE SCREW	44	214



## TYPE MP-S - COMPLETE WITH WRENCH, LESS BOX

PART NO.	COLLAR SIZE	DESCRIPTION	LINKS / DIES	WEIGHT
33030	2 7/8" - 4 1/8"		7 / 8	83
33031	4" - 5"		8 / 9	91
3331		BOX		42

## TYPE MP-R - COMPLETE WITH WRENCH, LESS BOX

PART NO.	COLLAR SIZE	DESCRIPTION	LINKS / DIES	WEIGHT
33011	4 1/2" - 5 5/8"		7 / 8	81
33012	5 1/2" - 7"		8 / 9	89
33013	6 3/4" - 8 1/4"		9 / 10	97
33014	8" - 9 1/4"		10 / 11	105
33015	9 1/4" - 10 1/2"		11 / 12	113
3331		BOX		42

## TYPE MP-M - COMPLETE WITH WRENCH, LESS BOX

PART NO.	COLLAR SIZE	DESCRIPTION	LINKS / DIES	WEIGHT
33016	10 1/2" - 11 1/2"		12 / 13	121
33017	11 1/2" - 12 1/2"		13 / 14	129
33018	12 1/2" - 13 5/8"		14 / 15	137
33019	13 5/8" - 14 3/4"		15 / 16	145
33020	14 3/4" - 15 7/8"		16 / 17	153
3331		BOX		42

## TYPE MP-L - COMPLETE WITH WRENCH, LESS BOX

PART NO.	COLLAR SIZE	DESCRIPTION	LINKS / DIES	WEIGHT
33021	15 7/8" - 17"		17 / 18	173
33022	17" - 18 1/2"		18 / 19	181
33023	18 1/8" - 19 3/8"		19 / 20	189
3331		BOX		42

## TYPE MP-L - COMPLETE WITH WRENCH, LESS BOX

PART NO.	COLLAR SIZE	DESCRIPTION	LINKS / DIES	WEIGHT
33024	19 3/8" - 20 3/8"	DOUBLE SCREW	16 / 20	196
33025	20 3/8" - 21 1/2"	DOUBLE SCREW	17 / 21	204
33032	21" - 22 5/8"	DOUBLE SCREW	18 / 22	212
33033	22 5/8" - 23 3/4"	DOUBLE SCREW	19 / 23	220
33034	23 3/4" - 24 7/8"	DOUBLE SCREW	20 / 24	228
33035	24 7/8" - 26"	DOUBLE SCREW	21 / 25	236
33036	26" - 27 1/8"	DOUBLE SCREW	22 / 26	244
33039	29 3/8" - 30 1/2"	DOUBLE SCREW	24 / 28	260
33044	35" - 36 1/8"	DOUBLE SCREW	29 / 33	300



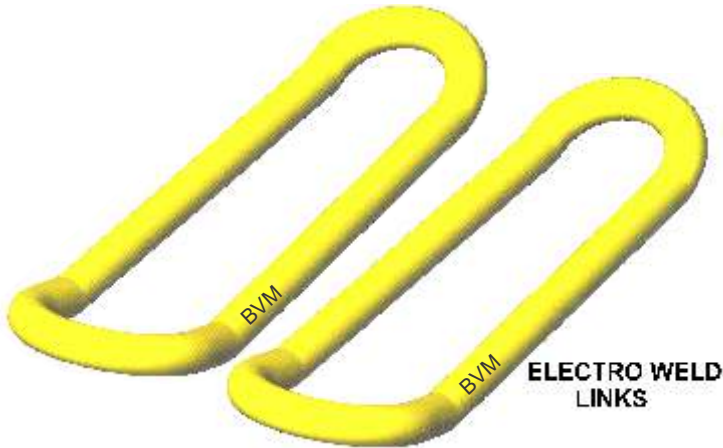
SALES@BVMCORP.COM  
 877-975-1402  
 303-975-1402  
 FAX - 303-975-0981  
 INTL - (01)303-975-1402  
 WWW.BVMCORP.COM

# ELEVATOR LINKS (BAILS)

## WORK OVER LINKS

PART NO.	SIZE - LENGTH	RATED CAP. TONS	WEIGHT PER SET
17536	1 3/4" - 36"	150	125
17548	1 3/4" - 48"	150	216
17560	1 3/4" - 60"	150	390
17572	1 3/4" - 72"	150	324
17584	1 3/4" - 84"	150	420
17596	1 3/4" - 96"	150	310
178108	1 3/4" - 108"	150	350
175120	1 3/4" - 120"	150	390

OTHER SIZES AVAILABLE



**ELECTRO WELD  
LINKS**

## ELECTRO WELD LINKS

PART NO.	SIZE - LENGTH	RATED CAP. TONS	WEIGHT PER SET
87518	7/8" - 18"	20	15
87524	7/8" - 24"	20	20
12526	1 1/4" - 26"	50	41
12530	1 1/4" - 30"	50	47
12536	1 1/4" - 36"	50	53
12540	1 1/4" - 40"	50	68
12548	1 1/4" - 48"	50	73
12560	1 1/4" - 60"	50	94
12572	1 1/4" - 72"	50	118
18030	1 3/4" - 30"	80	155
18036	1 3/4" - 36"	80	170
18042	1 3/4" - 42"	80	180
18048	1 3/4" - 48"	80	190
18060	1 3/4" - 60"	80	180
18072	1 3/4" - 72"	80	230
18084	1 3/4" - 84"	80	260
20042	2" - 42"	100	180
20048	2" - 48"	100	200
20060	2" - 60"	100	240
20072	2" - 72"	100	280
20084	2" - 84"	100	320
20096	2" - 96"	100	360

## LINKS - BIG EYE

PART NO.	SIZE - LENGTH	RATED CAP. TONS	WEIGHT PER SET
22560-BE	2 1/4" - 60"	250	480
22572-BE	2 1/4" - 72"	250	530
22584-BE	2 1/4" - 84"	250	580
22596-BE	2 1/4" - 96"	250	630
225108-BE	2 1/4" - 108"	250	870
225120-BE	2 1/4" - 120"	250	745
225132-BE	2 1/4" - 132"	250	792
225144-BE	2 1/4" - 144"	250	875
27560-BE	2 3/4" - 60"	350	620
27572-BE	2 3/4" - 72"	350	685
27584-BE	2 3/4" - 84"	350	740
27596-BE	2 3/4" - 96"	350	805
275108-BE	2 3/4" - 108"	350	870
275120-BE	2 3/4" - 120"	350	935
275132-BE	2 3/4" - 132"	350	1000
275150-BE	2 3/4" - 150"	350	1095
275168-BE	2 3/4" - 168"	350	1190
275180-BE	2 3/4" - 180"	350	1278
275192-BE	2 3/4" - 192"	350	1340
275216-BE	2 3/4" - 216"	350	1450
275240-BE	2 3/4" - 240"	350	1580
350108	3 1/2" - 108"	500	1450
350132	3 1/2" - 132"	500	1670
350144	3 1/2" - 144"	500	1780
350160	3 1/2" - 160"	500	1927
350168	3 1/2" - 168"	500	2000
350180	3 1/2" - 180"	500	2110
350192	3 1/2" - 192"	500	2202
350264	3 1/2" - 264"	500	2882



[SALES@BVMCORN.COM](mailto:SALES@BVMCORN.COM)  
 877-975-1402  
 303-975-1402  
 FAX - 303-975-0981  
 INTL - (01)303-975-1402  
[WWW.BVMCORN.COM](http://WWW.BVMCORN.COM)

ALL ELEVATOR LINKS ARE LOAD TESTED TO 150% OF RATED LOAD AND ARE CERTIFIED BY BVM TO API 8C SPECIFICATIONS AND STANDARDS

# CASING SPIDER - ELEVATOR

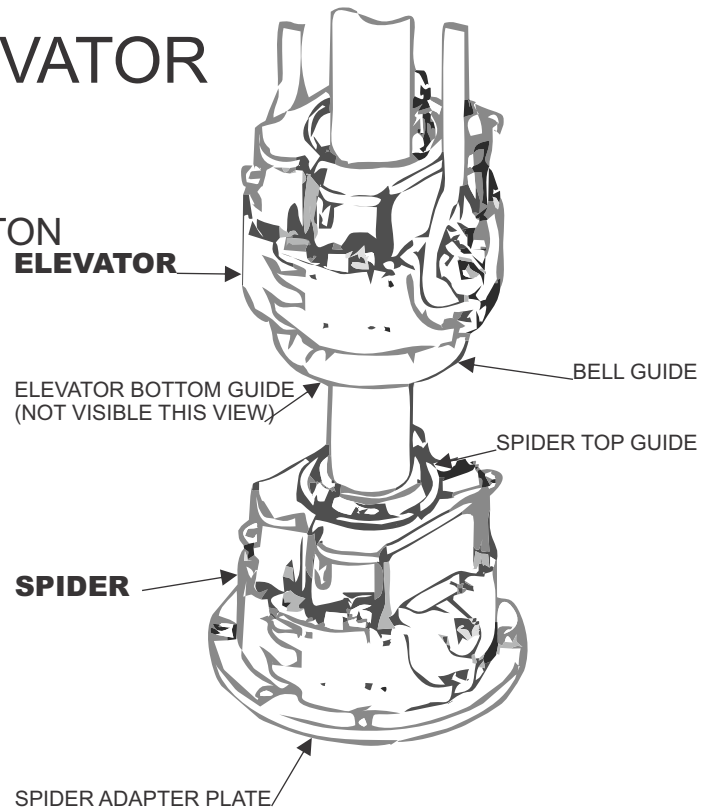
## BVM CASING SPIDER / ELEVATOR

SIZED FROM 2 3/8" TO 24 1/2"

200 TON - 250 TON - 350 TON - 500 TON - 750 TON

### 200 / 250 TON CAPACITY 2 3/8" TO 7 5/8"

CASING SIZE	SLIP BODY SIZE	ELEVATOR BOTTOM GUIDE	SPIDER TOP GUIDE	SLIP SET	INSERT SET
79200	ELEVATOR / SPIDER [MANUAL] LESS SLIPS AND GUIDES				
79200P	ELEVATOR / SPIDER [AIR/MANUAL] LESS SLIPS AND GUIDES				
79772	BELL GUIDE KIT				
79462	SPIDER ADAPTER PLATE				
79881	AIRLINE & FILTER ASSEMBLY				
CASING SIZE	SLIP BODY SIZE	ELEVATOR BOTTOM GUIDE	SPIDER TOP GUIDE	SLIP SET	INSERT SET
2 3/8"	3 1/2"	79751	79525	79527-23	2160-12B-12
2 7/8"	3 1/2"	79871	79864	79572-28	2161-12B-12
3 1/2"	3 1/2"	79870	79863	79527-35	2162-24
3 1/2"	4 1/2"	79870	79863	79901-35	2163-16B-16
4"	4 1/2"	79869	79862	79901-40	2164-16B-16
4 1/2"	4 1/2"	79868	79861	79901-45	2165-32
4 1/2"	5 1/2"	79868	79861	79525-45	2168-16B-16
5"	5 1/2"	79867	79860	79525-50	2169-16B-16
5 1/2"	5 1/2"	79867	79860	79525-55	2170-32
6 5/8"	7 5/8"	79866	79859	79524-66	2632-24B-24
7"	7 5/8"	79866	79859	79524-70	2623-24B-24
7 5/8"	7 5/8"	79865	79858	79524-76	2633-48



CASING SIZE	SLIP BODY SIZE	ELEVATOR BOTTOM GUIDE	SPIDER TOP GUIDE	SLIP SET	INSERT SET
11776	ELEVATOR / SPIDER [MANUAL] LESS SLIPS AND GUIDES				
11798	BELL GUIDE KIT				
19276	SPIDER ADAPTER PLATE				
11881	AIRLINE & FILTER ASSEMBLY				
CASING SIZE	SLIP BODY SIZE	ELEVATOR BOTTOM GUIDE	SPIDER TOP GUIDE	SLIP SET	INSERT SET
4 1/2"	5 1/2"	11787	18419-1	11865	2168-16B-24
5"	5 1/2"	11788	18419-2	11864	2169-16B-24
5 1/2"	5 1/2"	11789	18419-3	11863	2170-40
6 5/8"	7 5/8"	11791	18419-4	11861	2632-24B-36
7"	7 5/8"	11791	18419-4	11860	2623-24B-36
7 5/8"	7 5/8"	11792	18419-5	11859	2633-60
7 3/4"	7 5/8"	11792	18419-5	71592-1	2649-60
8 5/8"	9 5/8"	11793	18419-6	11857	2640-32B-48
8 3/4"	9 5/8"	11793	18419-6	71591-3	2650-32B-48
9 5/8"	9 5/8"	11794	18419-7	11856	2633-80
9 3/4"	9 5/8"	71231	18419-15	71591-2	2649-80
9 7/8"	9 5/8"	71231	18419-15	71591-1	2649-80
10 3/4"	11 3/4"	11795	18419-8	11854	2640-40B-60
107/8"	11 3/4"	11795	18419-8	71590-1	2650-40B-60
11 3/4"	11 3/4"	11796	18419-9	11853	2637-100
11 7/8"	11 3/4"	11796	18419-9	71590-2	2651-100
12 3/4"	14"	11797-1	18419-13	70732-6	2657-40B-60
13 3/8"	14"	11797	18419-10	70732-5	2636-40B-60
13 1/2"	14"	71228	18419-12	70732-4	2652-40B-60
13 5/8"	14"	71228	18419-12	70732-3	2653-40B-60
13 3/4"	14"	71228	18419-12	70732-2	2655-40B-60
14"	14"	15939	18419-11	70732-1	2635-100



SALES@BVMCORP.COM  
 877-975-1402  
 303-975-1402  
 FAX - 303-975-0981  
 INTL - (01)303-975-1402  
 WWW.BVMCORP.COM



# CASING SPIDER - ELEVATOR

## 500 TON CAPACITY 4 1/2" TO 14"

13800	ELEVATOR / SPIDER [MANUAL] LESS SLIPS AND GUIDES				
11798	BELL GUIDE KIT				
19276	SPIDER ADAPTER PLATE				
11881	AIRLINE & FILTER ASSEMBLY				
CASING SIZE	SLIP BODY SIZE	ELEVATOR BOTTOM GUIDE	SPIDER TOP GUIDE	SLIP SET	INSERT SET
4 1/2"	5 1/2"	11787	18419-1	13842-1	2168-16B-32
5"	5 1/2"	11788	18419-2	13842-2	2169-16B-32
5 1/2"	5 1/2"	11789	18419-3	13842-1	2170-48
6 5/8"	7 5/8"	11791	18419-4	13841-3	2632-24B-48
7"	7 5/8"	11791	18419-4	13841-2	2623-24B-48
7 5/8"	7 5/8"	11792	18419-5	13841-1	2633-72
7 3/4"	7 5/8"	11792	18419-5	13841-4	2649-72
8 5/8"	9 5/8"	11793	18419-6	13840-3	2640-32B-64
8 3/4"	9 5/8"	11793	18419-6	13840-5	2650-32B-64
9 5/8"	9 5/8"	11794	18419-7	13840-1	2633-96
9 3/4"	9 5/8"	71231	18419-15	13840-4	2649-96
9 7/8"	9 5/8"	71231	18419-15	13840-2	2649-96
10 3/4"	11 3/4"	11795	18419-8	13839-3	2640-40B-80
107/8"	11 3/4"	11795	18419-8	13839-4	2650-40B-80
11 3/4"	11 3/4"	11796	18419-9	13839-2	2637-120
11 7/8"	11 3/4"	11796	18419-9	13839-1	2651-120
12 3/4"	14"	11797-1	18419-13	70794-7	2657-40B-80
13 3/8"	14"	11797	18419-10	70734-5	2636-40B-80
13 1/2"	14"	71228	18419-12	70734-4	2652-40B-80
13 5/8"	14"	71228	18419-12	70734-3	2653-40B-80
13 3/4"	14"	71228	18419-12	70734-2	2655-40B-80
14"	14"	15939	18419-11	70734-1	2635-120

## 500 TON CAPACITY 16" TO 24 1/2"

15740-1	ELEVATOR / SPIDER [MANUAL] LESS SLIPS AND GUIDES				
19001	BELL GUIDE KIT				
16552	SPIDER ADAPTER PLATE				
11881	AIRLINE & FILTER ASSEMBLY				
CASING SIZE	SLIP BODY SIZE	ELEVATOR BOTTOM GUIDE	SPIDER TOP GUIDE	SLIP SET	INSERT SET
16"	16"	16184	73138	15790-4	2635-180
18 5/8"	18 5/8"	15794	73137	15790-3	2668-180
20"	20"	15793	73136	15790-2	2635-180
24"	24"	15792	73135	15790-1	2635-180



## 750 TON CAPACITY 4 1/2" TO 14"

63000	ELEVATOR / SPIDER [MANUAL] LESS SLIPS AND GUIDES				
19002	BELL GUIDE KIT				
17163	SPIDER ADAPTER PLATE				
11881	AIRLINE & FILTER ASSEMBLY				
CASING SIZE	SLIP BODY SIZE	ELEVATOR BOTTOM GUIDE	SPIDER TOP GUIDE	SLIP SET	INSERT SET
6 5/8"	7 5/8"	11791	18419-4	16182-4	2632-24B-60
7"	7 5/8"	11791	18419-4	16182-8	2623-24B-60
7 5/8"	7 5/8"	11792	18419-5	16182-7	2633-84
7 3/4"	7 5/8"	11792	18419-5	16182-21	2649-84
8 5/8"	9 5/8"	11793	18419-6	16182-6	2640-32B-80
8 3/4"	9 5/8"	11793	18419-6	16182-20	2650-32B-80
9 5/8"	9 5/8"	11794	18419-7	16182-3	2633-112
9 3/4"	9 5/8"	71231	18419-15	16182-19	2649-112
9 7/8"	9 5/8"	71231	18419-15	16182-18	2649-112
10 3/4"	11 3/4"	11795	18419-8	16182-5	2640-40B-100
107/8"	11 3/4"	11795	18419-8	16182-17	2650-40B-100
11 3/4"	11 3/4"	11795	18419-9	16182-2	2637-140
11 7/8"	11 3/4"	11796	18419-9	16182-16	2651-140
13 3/8"	14"	11791	18419-10	16182-10	2636-40B-100
13 1/2"	14"	71228	18419-12	16182-12	2652-40B-100
13 5/8"	14"	71228	18419-12	16182-15	2653-40B-100
13 3/4"	14"	71228	18419-12	70732-2	2655-40B-100
14"	14"	15939	18419-11	16182-9	2635-140

## 750 TON CAPACITY 16" TO 24 1/2"

16180	ELEVATOR / SPIDER [MANUAL] LESS SLIPS AND GUIDES				
19001	BELL GUIDE KIT				
16552	SPIDER ADAPTER PLATE				
11881	AIRLINE & FILTER ASSEMBLY				
CASING SIZE	SLIP BODY SIZE	ELEVATOR BOTTOM GUIDE	SPIDER TOP GUIDE	SLIP SET	INSERT SET
16"	16"	16184	73138	16181	2635-210
18 5/8"	18 5/8"	15794	73137	16179	2668-210
20"	20"	15793	73136	16178	2635-210
24"	24"	15792	73135	16900	2635-210



SALES@BVMCORN.COM  
 877-975-1402  
 303-975-1402  
 FAX - 303-975-0981  
 INTL - (01)303-975-1402  
 WWW.BVMCORN.COM

# TUBING AND CASING SPIDERS POWER UNITS - KELLY SPINNERS



## TUBING SPIDER PNEUMATIC / MANUAL

PART #	TYPE	SIZE (INCH)	WEIGHT	TONNAGE
86500	C	1.315 - 5 1/2	348	83
16500HD	C HEAVY DUTY	1.315 - 5 1/2	348	125

## ACCESSORIES

565622-100	SLIP BODY 3 1/2	1.315 - 3 1/2		83 & 125
565652-1.315	INSERT SET	1.315		83 & 125
565652-1.660	INSERT SET	1.660		83 & 125
565652-1.900	INSERT SET	1.900		83 & 125
565652-2.060	INSERT SET	2.060		83 & 125
565652-1	INSERT SET	2 3/8		83 & 125
565652-2 7/8	INSERT SET	2 7/8		83 & 125
565652-3 1/2	INSERT SET	3 1/2		83 & 125
865623-100	SLIP BODY 4 1/2	3 1/2 - 5 1/2		83 & 125
865653-1	INSERT SET	3 1/2		83 & 125
865653-2	INSERT SET	4		83 & 125
865653-3	INSERT SET	4 1/2		83 & 125
865624-4	SLIP BODY 4 3/4	4.75		83 & 125
865624-1	SLIP BODY 5	5		83 & 125
865624-2	SLIP BODY 5 1/2	5.5		83 & 125
65300	AIR HOSE SET			83 & 125
65200-100	FOOT CONTROL VALVE W/ COVER			84 & 125



## KELLY SPINNER PNEUMATIC / HYDRAULIC

PART #	THREAD CONN. (PIN & BOX)	MAX TORQUE	MAX SPEED FREE SPIN	UNIT WEIGH T	CRATED DIMENSIONS	POWER REQUIREMENT S FREE SPIN
200201-1	6 5/8 API REGULAR LEFT HAND	1800 FT LB	150 RPM	1110	35" X 37" X 40"	5.5 CFS@ 90 - 120 PSI
200201H-	6 5/8 API REGULAR LEFT HAND	1800 FT LB	150 RPM	1048	35" X 37" X 40"	



## HYDRAULIC POWER UNITS

DIESEL UNITS AVAILABLE WITH DEUTZ 4 - 5 - 6 CYLINDER ENGINES WITH OR WITHOUT TURBO

ELECTRIC POWERED UNITS AVAILABLE IN MULTIPLE HORSEPOWER, VOLT AGE AND PHASE REQUIREMENTS

BUILT TO SUIT - SKID MOUNTED OR TRAILER - WITH TOOL BASKET - TANDEM ENGINE AND PUMP



## HINGED CASING SPIDER - 200/250 TON - 3" TAPER

PART #	DESCRIPTION	WEIGHT
7704-A-167	36" HINGED CASING SPIDER	1100
7704-A-161	30" HINGED CASING SPIDER	1868
7704-A-130	20" HINGED CASING SPIDER	1614
7704-A-79	13 3/8" HINGED CASING SPIDER	950

## REDUCING BUSHINGS - 200 / 250 TON HINGED CASING SPIDER

7704-A-165	30" X 16"	980
7704-A-150	30" X 18 5/8"	900
7704-A-164	30" X 20"	850
7704-A-163	30" X 24"	755
7704-A-162	30" X 26"	605
7704-A-134	20" X 16"	395
7704-A-136	20" X 13 3/8"	480
7704-A-80	13 3/8" X 10 3/4"	160
7704-A-81	13 3/8" X 8 5/8" - 4" TAPER INSIDE	240

OTHER SIZES AVAILABLE



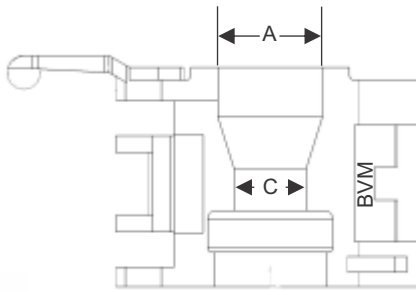
[SALES@BVMCORP.COM](mailto:SALES@BVMCORP.COM)  
877-975-1402  
303-975-1402  
FAX - 303-975-0981  
INTL - (01)303-975-1402  
[WWW.BVMCORP.COM](http://WWW.BVMCORP.COM)

# ELEVATOR BORE CODES

DRILL PIPE BORE CODES				
DRILL PIPE	TYPE UPSET	TOOL JOINT	18° TAPERED	90° COLLAR
2 3/8	IU	API REG.		109
	EU	NC 26 (IF) WO OH SL H90	116	110
2 7/8	IU	API REG. XH	117	108
	EU	NC 37 (IF) WO OH SL H90	118	101
3 1/2	IU	API REG. FH	119	102
	EU	NC 38 (IF) WO OH SL H90	120	103
4	IU	NC 40 (FH) H90	121	104
	EU	NC 46 (IF) WO OH	122	105
4 1/2	IU	NC 46 (XH) FH H90	122	105
	EU	NC 50 (IF) WO OH	123	106
5	IEU	NC 50 (XH) 4 1/2 IF 5 1/2 FH	123	106
5 1/2	IEU	FH	124	107
	IEU	IF	678	
6 5/8	IEU	FH	740	

COLLAR TYPE DRILL PIPE		
BORE CODE	TOP BORE A	BOTTOM BORE B
101	3 3/8	3 1/8
102	3 13/16	3 3/4
103	4 1/16	3 3/4
104	4 5/16	4 1/4
105	4 13/16	4 3/4
106	5 5/16	5 1/4
107	5 7/8	5 13/16
108	3 1/8	3 1/8
109	2 5/8	2 5/8
110	2 3/4	2 3/4
111	3 1/2	3 1/2
112	3 1/16	3 1/16
113	5 11/16	5 11/16
114	6 1/4	6 1/4
115	2 13/16	2 13/16

TUBING				
TUBING SIZE (IN.)	STYLE	BORE CODE	TOP BORE A	BOTTOM BORE B
1.050 (3/4)	PLAIN (NU)	150	1 5/32	1 13/32
	UPSET (EU)	151	1 13/32	1 13/32
1.315 (1)	PLAIN (NU)	152	1 13/32	1 19/32
	UPSET (EU)	153	1 19/32	1 19/32
1.660 (1 1/4)	PLAIN (NU)	154	1 3/4	1 29/32
	UPSET (EU)	155	1 29/32	1 29/32
1.900 (1 1/2)	PLAIN (NU)	156	2	2 3/16
	UPSET (EU)	157	2 3/16	2 3/16
2 3/8	PLAIN (NU)	158	2 15/32	2 11/32
	UPSET (EU)	159	2 23/32	2 23/32
2 7/8	PLAIN (NU)	160	2 31/32	3 1/6
	UPSET (EU)	161	3 7/32	3 7/32
3 1/2	PLAIN (NU)	162	3 19/32	3 2732
	UPSET (EU)	163	3 27/32	3 27/32
4	PLAIN (NU)	164	4 3/32	4 11/32
	UPSET (EU)	165	4 11/32	4 11/32
4 1/2	PLAIN (NU)	166 (129)	4 19/32	4 27/32
	UPSET (EU)	167	4 27/32	4 27/32



## PLAIN DRILL COLLAR WITH LIFT PLUGS

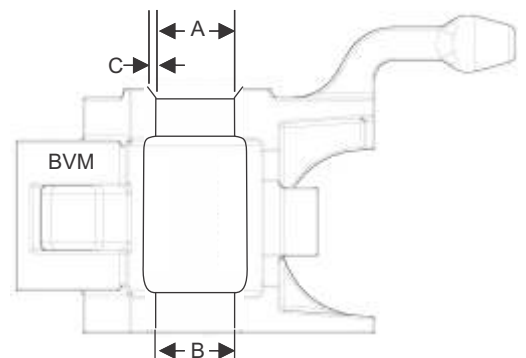
COLLAR OD (IN.)	BORE CODE	TOP BORE	BEVEL C	BOTTOM BORE B
2 1/2	201	2 21/32	1/16	2 21/32
2 3/4	203	2 29/32	1/16	2 29/32
3	205	3 5/32	1/16	3 5/32
3 1/8	206	3 9/32	1/16	3 9/32
3 1/4	207	3 13/32	1/16	3 13/32
3 1/2	209	3 21/32	1/16	3 21/32
3 3/4	211	3 29/32	1/16	3 29/32
4	213	4 5/32	1/16	4 5/32
4 1/8	519	4 9/32	1/16	4 9/32
4 1/4	548	4 13/32	1/16	4 13/32
4 1/2	215	4 21/32	1/16	4 21/32
4 3/4	354	4 15/16	1/16	4 15/16
5	552	5 3/16	1/16	5 3/16
5 1/4	219	5 7/16	1/16	5 7/16
5 1/2	411	5 11/16	1/16	5 11/16
5 3/4	222	5 31/32	1/16	5 31/32
6	349	6 7/32	1/16	6 7/32
6 1/4	348	6 15/32	1/16	6 15/32
6 3/8	331	6 19/32	1/16	6 19/32
6 1/2	135	6 23/32	1/16	6 23/32
6 3/4	338	7	1/16	7
7	372	7 1/4	1/16	7 1/4
7 1/4	335	7 1/2	1/16	7 1/2
7 1/2	137	7 3/4	1/16	7 3/4
7 3/4	550	8	1/16	8
8	334	8 1/4	1/16	8 1/4
8 1/4	347	8 1/2	1/16	8 1/2
8 1/2	580	8 25/32	1/16	8 25/32
8 3/4	226	9 1/32	1/16	9 1/32
9	356	9 9/32	1/16	9 9/32
9 1/4	227	9 17/32	1/16	9 17/32
9 1/2	346	9 25/32	1/16	9 25/32
10	228	10 11/32	1/16	10 11/32
10 1/2	229	10 27/32	1/16	10 27/32
11	230	10 11/32	1/16	10 11/32

## DRILL COLLAR WITH ZIP LIFT RECESS

COLLAR OD (IN.)	BORE CODE	TOP BORE	BEVEL C	BOTTOM BORE B
4 1/8	117	3 13/16	1/16	4 1/4
4 3/4	435	4 3/8	1/16	4 7/8
5 1/4	179	4 7/8	1/16	5 3/8
5 1/2	180	5 1/8	1/16	5 3/8
5 3/4	181	5 1/4	1/16	5 7/8
6	362	5 1/2	1/16	6 1/8
6 1/4	337	5 3/4	1/16	6 3/8
6 1/2	373	6	1/16	6 5/8
6 3/4	387	6 3/16	3/32	6 7/8
7	361	6 7/16	3/32	7 1/8
7 1/4	357	6 11/16	3/32	7 3/8
7 1/2	188	6 15/16	3/32	7 5/8
7 3/4	339	7 3/16	3/32	7 7/8
8	336	7 7/16	3/32	8 1/8
8 1/4	422	7 11/16	3/32	8 3/8
8 1/2	426	7 15/16	3/33	8 5/8
9	427	8 3/8	1/8	9 1/8
9 1/2	370	8 7/8	1/9	9 5/8
9 3/4	367	9 1/8	1/8	9 7/8
10	195	9 3/8	1/8	10 1/8
10 3/4	527	10 1/8	1/8	10 7/8
11	419	10 3/8	1/8	11 1/8
11 1/4	196	10 5/8	1/8	11 3/8

## CASING

CASING SIZE (IN.)	BORE CODE	TOP BORE A	BOTTOM BORE B
4 1/2	129	4 19/32	4 27/32
4 3/4	130	4 27/32	4 27/32
5	131	5 3/32	5 3/32
5 1/2	132	5 5/8	5 5/8
5 3/4	133	5 7/8	5 7/8
6	134	6 1/8	6 1/8
6 5/8	135	6 3/4	6 3/4
7	136	7 1/8	7 1/8
7 5/8	137	7 3/4	7 3/4
8 5/8	139	8 25/32	8 25/32
9	140	9 5/32	9 5/32
9 5/8	141	9 25/32	9 25/32
9 7/8	649	10 1/32	10 1/32
10 3/4	142	10 29/32	10 29/32
11 3/4	143	11 15/16	11 15/16
12 3/4	850	12 15/16	13 15/16
13 3/8	144	13 9/16	13 9/16
16	145	16 7/32	16 7/32
18 5/8	146	18 7/8	18 7/8
20	147	20 1/4	20 1/4
21 1/2	148	21 25/32	21 25/32
22	688	22 9/32	22 9/32
24	630	24 5/16	24 5/16
24 1/2	149	24 13/16	24 13/16
26	650	26 11/32	26 11/32
28	690	28 11/32	28 11/32
30	644	30 3/8	30 3/8
36	660	36 7/16	37 7/16



# LOAD TESTING - REPAIR - RECERTIFICATION



**BVM is uniquely qualified to preform LOAD TESTING, REPAIR and RECERTIFICATION on elevators, links and tongs. Our manufacturing plant based repair and recertification facility offers access to our supply of new parts, skilled and certified welders and load test technicians as well as our NDE and Quality Control specialists.**

**We utilize the same NDE testing, load testing and certified welding procedures for recertification as we do for our new tools. The sand blasting and factory paint booth assure a factory new paint application after testing.**



# TERMS, CONDITIONS & WARRANTY

## PURCHASE ORDERS

All orders must be accompanied by a purchase order or our Sales Acknowledgement form signed and faxed back to us. We will not accept verbal orders without written confirmation.

## TERMS OF PAYMENT:

All payments are due as set forth on the front of this invoice. All late payments will be assessed a 2% per month finance fee and a \$50 [fifty] rebilling fee for each rebilling fee sent. If BVM must initiate action to collect unpaid money, BVM shall be awarded collection costs including but not limited to attorney's fees and costs. Buyer agrees to allow BVM or BVM's agent to enter the property of the Buyer where property is located and remove equipment if payments are not made as set forth in this invoice. Buyer agrees that BVM need not give notice or file an action to remove equipment if equipment is not paid as set forth herein.

## ACCEPTANCE OF GOODS:

The buyer's receipt of equipment for a period of ten [10] days without written objection, shall be conclusive evidence of acceptance of equipment by Buyer and shall be deemed and construed as conclusive evidence that such equipment is as herein represented and shall be deemed as conforming goods.

## JURISDICTION & ARBITRATION:

This agreement and the law regarding the interpretation and enforcement of this agreement shall be held in accordance to laws of the State of Colorado. Both parties to this agreement submit themselves to the jurisdiction of the State of Colorado.

If a dispute arises regarding this purchase, invoice or any related subject or item between BVM and Buyer, both parties agree to submit themselves to final and binding arbitration according to the laws and interpretations of the State of Colorado and the American Arbitration Association in Denver, Colorado.

## SEVERABILITY AND WAIVER:

The partial or complete invalidity of any one or more provisions of this agreement shall not affect the validity of continuing force and effect of any other provisions. The failure to either party hereto to insist, in any one or more instances, upon the performance of the terms, covenants or conditions of this agreement, or to exercise any right herein, shall not be construed as a waiver or relinquishment of such term, covenant, condition or right as with respect to further performance.

## RETURNS:

No materials purchased hereunder shall be returned without Return Materials Authorization Number [RMA] from our Quality Control Department. Standard restocking fee charge shall be 20% of the invoice price. All returns shall be freight prepaid unless otherwise approved. Equipment returned under warranty must be returned on a designated freight carrier of BVM.

## WARRANTY:

Equipment sold by BVM Corporation Inc. is warranted against manufacturer's defects for the period of 12 months from the first use or 18 months from original sale from BVM Corporation or their authorized reseller, whichever is less. If the equipment supplied fails to conform to specifications or is proven to be defective, BVM Corporation Inc. will issue a Return Material Authorization for goods to be returned for repair or replacement at our option, without cost to the original purchaser, or upon agreement of both parties, the repayment of the purchase price may be issued. This shall constitute Purchaser's sole and exclusive remedy. Purchaser will notify BVM Corporation in writing of any equipment which does not conform to specifications within 30 days of delivery or field failure. If purchaser fails to give proper notification the terms of this warranty may become null and void. Goods may be returned at the expense of BVM Corporation Inc. only when an authorized RMA has been issued by BVM Corporation Quality Assurance Dept. If faulty equipment is received by BVM and it is found that the equipment has malfunctioned due to lack of maintenance or excessive wear and tear, purchaser will be billed for all shipping costs and any repairs agreed upon between BVM quality dept. and purchaser. BVM Corporation Inc. shall have no liability whatsoever for incidental or consequent damages, resulting from personal injury, property damage or shutdown due to product modification or unauthorized repairs. Purchaser hereby agrees to indemnify BVM Corporation Inc. from all liability arising from the purchaser's improper use or operation of equipment manufactured or sold by BVM Corporation Inc.



[SALES@BVMCORP.COM](mailto:SALES@BVMCORP.COM)  
877-975-1402  
303-975-1402  
FAX - 303-975-0981  
INTL - (01)303-975-1402  
[WWW.BVMCORP.COM](http://WWW.BVMCORP.COM)

## POWER UNIT



4 cylinder Deutz (914L04) with 60 GPM Hydraulic Pump  
Custom Power Units Available  
Trailer or Skid Mount  
4, 5, & 6 Cyl Deutz Engines  
\* Call or email for more information



**BVM**  
CORPORATION  
USA

## BVM PICKUP LAYDOWN (PULD)\*



Model # BVM-LDM28 PU "Patent Pending" (Skid Type) -  
Designed for Work over rigs  
Length - 39 ft. Width - 40 in Height (lowered) - 36"\*  
Lifting Capacity - Range 2 & 3 Pipe 2 3/8" Tubing to 7 5/8" Casing  
Maximum Lifting capacity - 2500 lbs. Ability to reach rig floor 6 to 27' 8"\*  
Boom Extensions (Stinger) - 8 feet  
30 Foot Trough with 26 feet of Pipe Pusher Capacity  
Available in Wireless or Manual Valve Configuration  
\* Call or email for information

# NOTES



**BVM**  
CORPORATION  
USA

